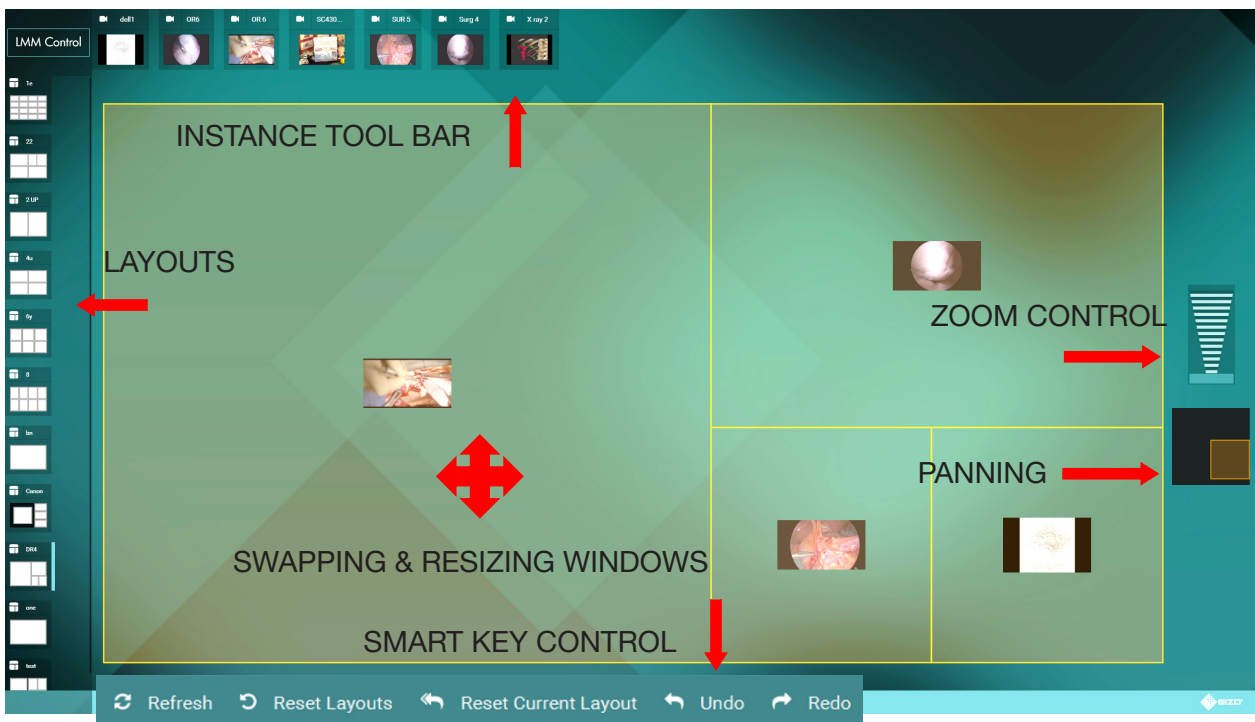


LMM0802 4.0 EXTENDED FIRMWARE

EIZO's New 4.0 extended firmware provides a host of new features to enhance user functionality and improve workflow.

This powerful firmware update for the LMM0802 features Dynamic Layout Control. Images can be resized on the fly with just one finger, touching the border lines the other images are automatically resized. Original aspect ratios are maintained on the screen and no image tiles are obscured during a procedure. These features can be utilized by purchasing a new LMM 4.0 extended firmware download. There is also a new LMM Control touch screen and a LMM PC Application which runs on any Windows 10 PC.



Images can be swapped from one tile to another by simply dragging the image to another tile. You can swap across, diagonally, up, or down instantly changing the layout.

Zoom up to 4X on any image. Easily position the area of interest on the panning control box.



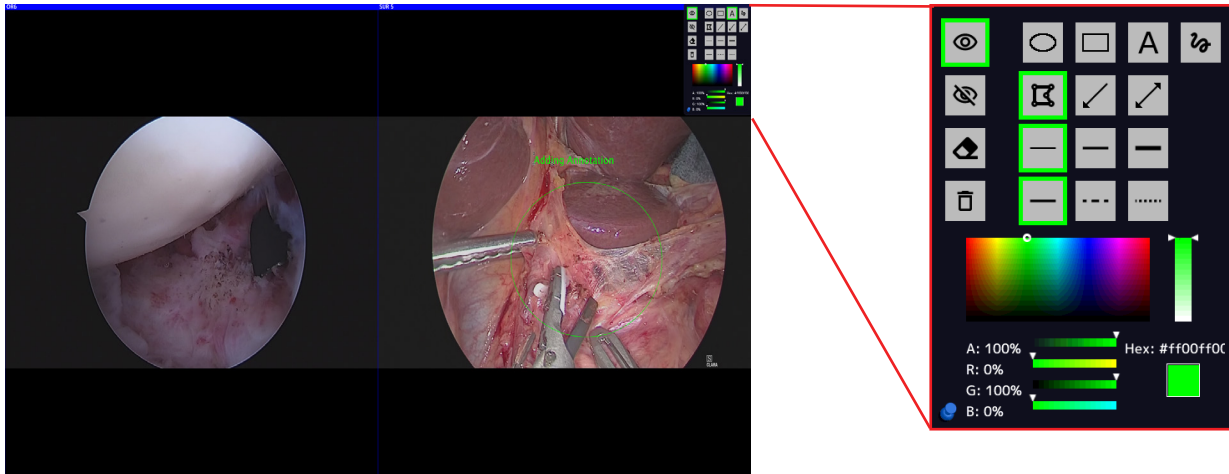
ZOOM & PAN CONTROLS



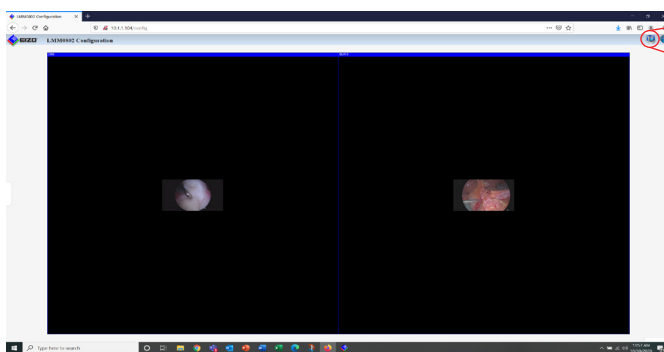
Smart key control has been added to quickly undo or redo any changes made. Layouts can be quickly returned to their original state.

Adding Annotations on Screen

Connect a USB keyboard and wireless mouse to the LMM0802 to add shapes and letters to any on screen image. Colors can be changed and the letters can be resized.



Saving Annotations with Firefox Web Browser



Firefox Web Browser

CLICK ON ICON



Annotations can be captured using an external recorder or by viewing the image with a FireFox web browser. Simply click the icon of the camera on the top right and the image will be captured.

Product Ordering Codes

LMM802	6GF6030-1AB00	Large Monitor Manager for 2 x 4MP display outputs, 8 signal inputs, USB KVM up to 8 PCs.
LMM0802-FW4.0C	6GF67301AA00	Large Monitor Manger complete firmware update package for older LMM0802 units with FW version 3.02. It includes the 4.0 Base firmware and the 4.0 Extended firmware. The 4.0 extended firmware offers dynamic layout control, image resizing with pan and zooming of control. It also includes on screen annotation. Both files are required for the installation. A serial number of the LMM0802 is required.
LMM0802-FW4.0E	6GF67301AA01	Large Monitor Manager firmware 4.0 Extended. This firmware offers dynamic layout control, image resizing with pan and zooming and includes on screen annotation. This firmware is designed to be used with newer LMM0802 with Type 6 PC- Rev (20) 02. A serial number of LMM0802 is required for purchase.
LMM PC AP	6GF67301AE00	PC application software designed to run on Windows 10 PC's. This software controls an LMM0802 that has 4.0 Extended installed. It is not compatible with older units that have 3.02 installed. The software offers dynamic layout control, with pan and zooming of image.
CIDLMMCONT	MLC121-BT	12.1" Touch Computer interface for LMM0802 only with 4.0 Extended Firmware. This system now includes the LMM PC application installed. The software offers dynamic layout control, with pan and zooming of image.



You will find your EIZO contact partner at:
www.eizo.com

ALL PRODUCT NAMES ARE TRADEMARKS OR REGISTERED TRADEMARKS OF THEIR RESPECTIVE COMPANIES. EIZO, THE EIZO LOGO, AND DURAVISION ARE REGISTERED TRADEMARKS OF EIZO CORPORATION. SPECIFICATIONS ARE SUBJECT TO CHANGE WITHOUT NOTICE.