



**LMM0802 Field Firmware Update Instructions**  
**FW 3.0.2 to FW 4.0.0 Extended**





# LMM0802 Field Firmware Update Instructions:

## FW update 3.0.2 to 4.0.0 Extended.

Log into the LMM0802 to confirm the application has 3.0.2 revision installed. Select the system information and this screen will appear.



## Updating the firmware

The firmware update can be run using a USB stick connected to the LMM or via the network server. If remote access is available, the update file can be run from PC or a storage location on the network.

## NOTICE

### Firmware update

- Ensure that the power supply to the LMM is securely connected during the firmware update. An interrupted firmware update can result in device failure.
- Perform a firmware update in consultation with your local distributor or on the recommendation of EIZO only.
- Only use firmware updates released by EIZO to ensure proper function of the LMM.

### Note:

- Save the user-defined settings before starting the firmware update  
See also Backup/Restore in the LMM0802 instruction manual (see page 57).



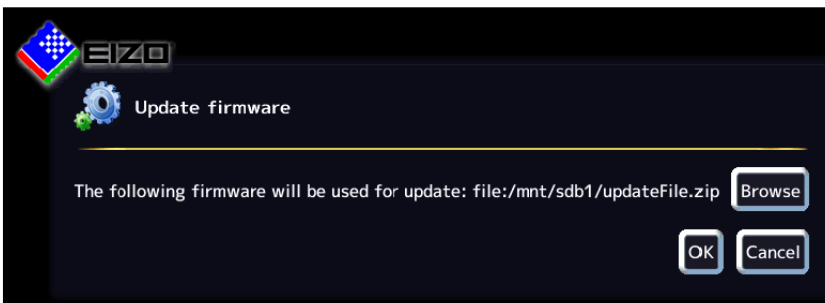
## Prerequisite

- The network settings must be specified for an update via remote access or a network server. See also Setting the network connection in the LMM0802 instruction manual (see page 51).
- The update file is available and can be accessed.

## Procedure

To update the firmware, proceed as follows:

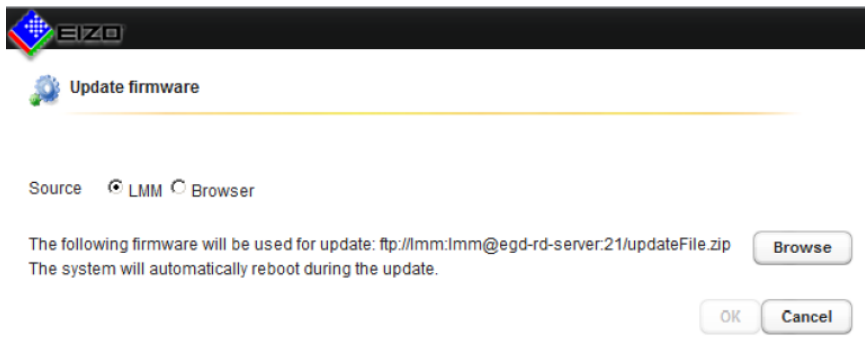
1. Click the "Update firmware" button in the "Basic settings" (extended) sidebar. With local operation the following dialog window opens:





### Configuring 6.8 "Base settings" (extended) sidebar

LMM0802 Instructions for Use, 12/2016 57

With remote access the following dialog window opens in the web browser:



2. Select the update files: This FW update requires two Zip Files. The system will reboot after each installation.
  - a. Install first  updateFile-type2-4.0.0-id-9ac9d9d-b55
  - b. Install second  updateFile\_type2-lmm-4.0.0-extended\_id-964871b-b6

**Note:** The file name always begins with "UpdateFile" and ends with "ZIP".

- If you want to run the update file from the USB stick or network server, click "Browse".
- If you access remotely and want to run the update file from the PC or network, select "Browser" as the source and then click "Upload file".



3. Perform the firmware update with "OK".

**CAUTION:** Do not switch off the device during the update; otherwise, irreparable damage may result.

**Note:** During the update the LMM restarts once and at the end shuts down.

4. Once the LMM fans shut down or LED L1 is off or darker than LED L2, switch off the LMM using the power switch.
5. Wait at least 15 seconds, and then switch on the LMM.