



FlexScan®
Business Monitor Solutions



Now, find your workstyle.

Both performance and environmental consciousness are important in today's society.

FlexScan combines cutting-edge technology with sustainable design to achieve the ideal in workstyle innovation.

Whether it be in the office or at home, FlexScan enables business professionals to achieve comfort and efficiency while staying kind to the environment.

Now, find your workstyle.



FlexScan®



Open-Plan Office



Satellite Office


















Telecommuting



Hybrid Work

Find the Solution that Suits Your Workstyle Needs.

		Premium Plus							Premium							New Standard				Basic																																																																																																																																																																																																																																																																																																																																																																																																																																																																																																																																																																																																																																																																																																																																																																																																																																																																																																																																																																																																																																																			
		I need a webcam & mic <i>See page 9</i>																																																																																																																																																																																																																																																																																																																																																																																																																																																																																																																																																																																																																																																																																																																																																																																																																																																																																																																																																																																																																																																																					
		My tasks require a large working area <i>See page 7 - 9</i>							I need to use multiple monitors with less cable clutter <i>See page 11</i>																																																																																																																																																																																																																																																																																																																																																																																																																																																																																																																																																																																																																																																																																																																																																																																																																																																																																																																																																																																																																																																														
		I need a stable network connection for web meetings <i>See page 11</i>																																																																																																																																																																																																																																																																																																																																																																																																																																																																																																																																																																																																																																																																																																																																																																																																																																																																																																																																																																																																																																																																					
		Having my battery always fully charged allows me to focus on work <i>See page 10</i>																																																																																																																																																																																																																																																																																																																																																																																																																																																																																																																																																																																																																																																																																																																																																																																																																																																																																																																																																																																																																																																																					
		I prefer to work with an external mouse and keyboard when using my laptop																																																																																																																																																																																																																																																																																																																																																																																																																																																																																																																																																																																																																																																																																																																																																																																																																																																																																																																																																																																																																																																																					
		Eye care and ergonomics are important to me <i>See pages 12 - 13</i>																																																																																																																																																																																																																																																																																																																																																																																																																																																																																																																																																																																																																																																																																																																																																																																																																																																																																																																																																																																																																																																																					
		 EV4340X							 EV3895							 EV3450XC				 EV3240X																																																																																																																																																																																																																																																																																																																																																																																																																																																																																																																																																																																																																																																																																																																																																																																																																																																																																																																																																																																																																																																			
		 EV2740X							 EV2795							 EV2495				 EV2490																																																																																																																																																																																																																																																																																																																																																																																																																																																																																																																																																																																																																																																																																																																																																																																																																																																																																																																																																																																																																																																			
		 EV2740S							 EV2720S							 EV2485				 EV2480																																																																																																																																																																																																																																																																																																																																																																																																																																																																																																																																																																																																																																																																																																																																																																																																																																																																																																																																																																																																																																																			
		 EV2410R							 EV2400R							 EV2360																																																																																																																																																																																																																																																																																																																																																																																																																																																																																																																																																																																																																																																																																																																																																																																																																																																																																																																																																																																																																																																							
Inputs	USB Type-C®	✓	✓	✓	✓	✓	✓	✓	✓	✓	✓	✓	✓	✓	✓	✓	✓	✓	✓	✓	✓	✓	✓	✓	✓	✓	✓	✓	✓	✓	✓	✓	✓	✓	✓	✓	✓	✓	✓	✓	✓	✓	✓	✓	✓	✓	✓	✓	✓	✓	✓	✓	✓	✓	✓	✓	✓	✓	✓	✓	✓	✓	✓	✓	✓	✓	✓	✓	✓	✓	✓	✓	✓	✓	✓	✓	✓	✓	✓	✓	✓	✓	✓	✓	✓	✓	✓	✓	✓	✓	✓	✓	✓	✓	✓	✓	✓	✓	✓	✓	✓	✓	✓	✓	✓	✓	✓	✓	✓	✓	✓	✓	✓	✓	✓	✓	✓	✓	✓	✓	✓	✓	✓	✓	✓	✓	✓	✓	✓	✓	✓	✓	✓	✓	✓	✓	✓	✓	✓	✓	✓	✓	✓	✓	✓	✓	✓	✓	✓	✓	✓	✓	✓	✓	✓	✓	✓	✓	✓	✓	✓	✓	✓	✓	✓	✓	✓	✓	✓	✓	✓	✓	✓	✓	✓	✓	✓	✓	✓	✓	✓	✓	✓	✓	✓	✓	✓	✓	✓	✓	✓	✓	✓	✓	✓	✓	✓	✓	✓	✓	✓	✓	✓	✓	✓	✓	✓	✓	✓	✓	✓	✓	✓	✓	✓	✓	✓	✓	✓	✓	✓	✓	✓	✓	✓	✓	✓	✓	✓	✓	✓	✓	✓	✓	✓	✓	✓	✓	✓	✓	✓	✓	✓	✓	✓	✓	✓	✓	✓	✓	✓	✓	✓	✓	✓	✓	✓	✓	✓	✓	✓	✓	✓	✓	✓	✓	✓	✓	✓	✓	✓	✓	✓	✓	✓	✓	✓	✓	✓	✓	✓	✓	✓	✓	✓	✓	✓	✓	✓	✓	✓	✓	✓	✓	✓	✓	✓	✓	✓	✓	✓	✓	✓	✓	✓	✓	✓	✓	✓	✓	✓	✓	✓	✓	✓	✓	✓	✓	✓	✓	✓	✓	✓	✓	✓	✓	✓	✓	✓	✓	✓	✓	✓	✓	✓	✓	✓	✓	✓	✓	✓	✓	✓	✓	✓	✓	✓	✓	✓	✓	✓	✓	✓	✓	✓	✓	✓	✓	✓	✓	✓	✓	✓	✓	✓	✓	✓	✓	✓	✓	✓	✓	✓	✓	✓	✓	✓	✓	✓	✓	✓	✓	✓	✓	✓	✓	✓	✓	✓	✓	✓	✓	✓	✓	✓	✓	✓	✓	✓	✓	✓	✓	✓	✓	✓	✓	✓	✓	✓	✓	✓	✓	✓	✓	✓	✓	✓	✓	✓	✓	✓	✓	✓	✓	✓	✓	✓	✓	✓	✓	✓	✓	✓	✓	✓	✓	✓	✓	✓	✓	✓	✓	✓	✓	✓	✓	✓	✓	✓	✓	✓	✓	✓	✓	✓	✓	✓	✓	✓	✓	✓	✓	✓	✓	✓	✓	✓	✓	✓	✓	✓	✓	✓	✓	✓	✓	✓	✓	✓	✓	✓	✓	✓	✓	✓	✓	✓	✓	✓	✓	✓	✓	✓	✓	✓	✓	✓	✓	✓	✓	✓	✓	✓	✓	✓	✓	✓	✓	✓	✓	✓	✓	✓	✓	✓	✓	✓	✓	✓	✓	✓	✓	✓	✓	✓	✓	✓	✓	✓	✓	✓	✓	✓	✓	✓	✓	✓	✓	✓	✓	✓	✓	✓	✓	✓	✓	✓	✓	✓	✓	✓	✓	✓	✓	✓	✓	✓	✓	✓	✓	✓	✓	✓	✓	✓	✓	✓	✓	✓	✓	✓	✓	✓	✓	✓	✓	✓	✓	✓	✓	✓	✓	✓	✓	✓	✓	✓	✓	✓	✓	✓	✓	✓	✓	✓	✓	✓	✓	✓	✓	✓	✓	✓	✓	✓	✓	✓	✓	✓	✓	✓	✓	✓	✓	✓	✓	✓	✓	✓	✓	✓	✓	✓	✓	✓	✓	✓	✓	✓	✓	✓	✓	✓	✓	✓	✓	✓	✓	✓	✓	✓	✓	✓	✓	✓	✓	✓	✓	✓	✓	✓	✓	✓	✓	✓	✓	✓	✓	✓	✓	✓	✓	✓	✓	✓	✓	✓	✓	✓	✓	✓	✓	✓	✓	✓	✓	✓	✓	✓	✓	✓	✓	✓	✓	✓	✓	✓	✓	✓	✓	✓	✓	✓	✓	✓	✓	✓	✓	✓	✓	✓	✓	✓	✓	✓	✓	✓	✓	✓	✓	✓	✓	✓	✓	✓	✓	✓	✓	✓	✓	✓	✓	✓	✓	✓	✓	✓	✓	✓	✓	✓	✓	✓	✓	✓	✓	✓	✓	✓	✓	✓	✓	✓	✓	✓	✓	✓	✓	✓	✓	✓	✓	✓	✓	✓	✓	✓	✓	✓	✓	✓	✓	✓	✓	✓	✓	✓	✓	✓	✓	✓	✓	✓	✓	✓	✓	✓	✓	✓	✓	✓	✓	✓	✓	✓	✓	✓	✓	✓	✓	✓	✓	✓	✓	✓	✓	✓	✓	✓	✓	✓	✓	✓	✓	✓	✓	✓	✓	✓	✓	✓	✓	✓	✓	✓	✓	✓	✓	✓	✓	✓	✓	✓	✓	✓	✓	✓	✓	✓	✓	✓	✓	✓	✓	✓	✓	✓	✓	✓	✓	✓	✓	✓	✓	✓	✓	✓	✓	✓	✓	✓	✓	✓	✓	✓	✓	✓	✓	✓	✓	✓	✓	✓	✓	✓	✓	✓	✓	✓	✓	✓	✓	✓	✓	✓	✓	✓	✓	✓	✓	✓	✓	✓	✓	✓	✓	✓	✓	✓	✓	✓	✓	✓	✓	✓	✓	✓	✓	✓	✓	✓	✓	✓	✓	✓	✓	✓	✓	✓	✓	✓	✓	✓	✓	✓	✓	✓	✓	✓	✓	✓	✓	✓	✓	✓	✓	✓	✓	✓	✓	✓	✓	✓	✓	✓	✓	✓	✓	✓	✓	✓	✓	✓	✓	✓	✓	✓	✓	✓	✓	✓	✓	✓	✓	✓	✓	✓	✓	✓	✓	✓	✓	✓	✓	✓	✓	✓	✓	✓	✓	✓	✓	✓	✓	✓	✓	✓	✓	✓	✓	✓	✓	✓	✓	✓	✓	✓	✓	✓	✓	✓	✓	✓	✓	✓	✓	✓	✓	✓	✓	✓	✓	✓	✓	✓	✓	✓	✓	✓	✓	✓	✓	✓	✓	✓	✓	✓	✓	✓	✓	✓	✓	✓	✓	✓	✓	✓	✓	✓	✓	✓

See pages 22 - 25 for a detailed list and specifications of the complete FlexScan lineup, including square and wide monitors.

Bask in Beauty.



FlexScan EV4340X



Aesthetically Pleasing Design

The minimalist design of FlexScan monitors allows them to fit naturally in your work environment. Even with the black borders along the perimeter of the LCD there is very little distance between the display area of each screen in a multi-monitor configuration which makes for almost seamless viewing.

Color Coordination

The monitor is available in white, for a brighter office environment, or black, for a sleek and stylish mood. The cables and stand also come in matching colors for a fully coordinated look.



Tackle More with 4K

The EV4340X, EV3240X, EV2740X, and EV2740S support 4K (3840 x 2160 pixel) resolution, displaying four times the amount of information than standard Full HD (1920 x 1080 pixel) monitors. You can view more applications simultaneously on a single screen, greatly reducing the need to scroll or switch windows frequently.



Better Meeting Experience

The EV4340X displays at 4K resolution across a spacious 42.5-inch screen. The built-in 4-watt speakers provide clear audio for meeting spaces with several people. The included remote control can be used to change settings when the monitor is out of reach, such as in wall-mounted installations.



Connect. Communicate. Collaborate.



FlexScan EV3450XC

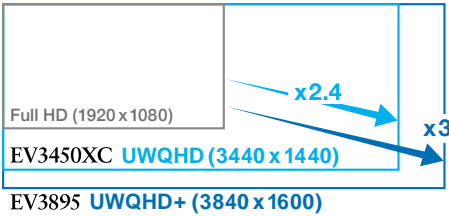
See Everything at a Comfortable Distance

The curved screen of the EV3895 and EV3450XC gently brings the edges of the monitor in to a comfortable distance, improving visibility, focus, and immersion.



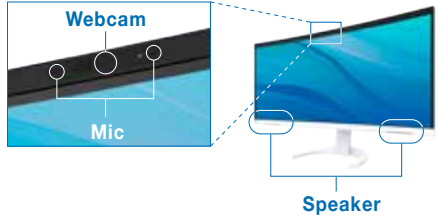
More Space, Seamless Viewing

The ultrawide screen of the EV3895 and EV3450XC provides an expanded workspace for flexible arrangement of multiple applications without the obtrusive bezels characteristic of multi-monitor setups.



Built-In Webcam / Mic / Speaker

The EV3450XC's webcam, microphone, and speaker are discreetly integrated into the bezel to blend in with your workspace. High quality video and audio make it easy to communicate with colleagues.



Get Connected. Get Started.



Stable Network Connection

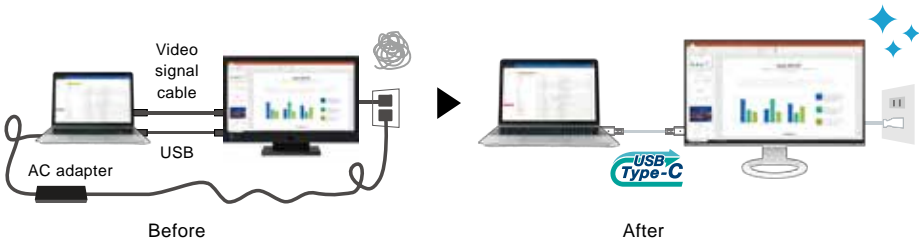
While many modern laptops are not equipped with a dedicated LAN port, a USB Type-C compatible monitor with a built-in LAN adapter provides users with access to the network via the monitor. This allows users to conduct conference calls or data transfers reliably and at high speed.



Compatible Models EV4340X / EV3895 / EV3450XC / EV3240X / EV2740X / EV2795 / EV2495 / EV2490

Streamlined Connection with USB Type-C

USB Type-C compatible monitors make it faster and easier to connect a laptop when moving between workstations, or when working away from the office.



Power Delivery

Power delivery via USB Type-C reliably charges laptops and small desktop PCs. This eliminates the need for a laptop's bulky power supply unit, freeing up desk space.



Directly Connect Peripherals

Laptops often have limited connectivity options for peripherals. Connecting to a USB Type-C compatible monitor gives access to a hub with multiple USB Type-A ports for easily connecting an external keyboard, mouse, web camera, or storage device.



Compatible Models EV4340X / EV3895 / EV3450XC / EV3240X / EV2740X / EV2795 / EV2495 / EV2490 / EV2740S / EV2720S / EV2485 / EV2480

?

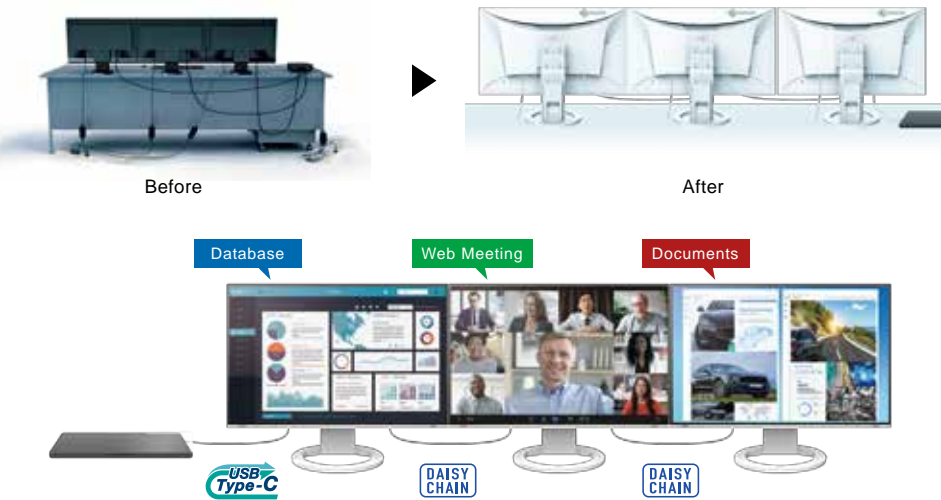
Visit Our Website

Infographic: "What is USB Type-C?"

>>>

Daisy Chain

With a daisy chain users can connect multiple monitors via a single video signal output. Connecting monitors in a daisy chain simplifies cable management, tidying up the back of the desk for an even cleaner office aesthetic.



Compatible Models EV2795 / EV2495 / EV2490

?

Visit Our Website

What do I need to know about daisy chaining?

>>>

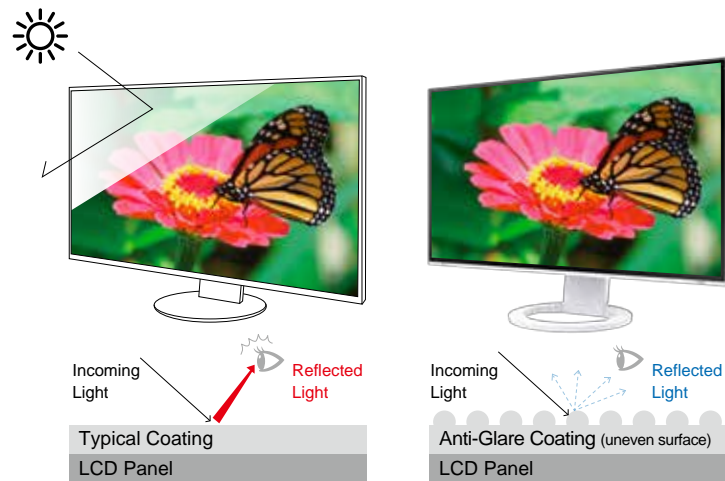
Say Goodbye to Tired Eyes.



Glare Reduction

Anti-Glare Coating

FlexScan monitors are treated with an anti-glare coating to reduce screen reflections caused by ambient lighting. The coating scatters incoming light, reducing the amount of light reflected into your eyes.



Flicker-Free Viewing

EyeCare Dimming Mode

Due to the way brightness is controlled on LED backlights, some users may experience flicker on the screen, causing eye fatigue. FlexScan monitors use a hybrid solution to regulate brightness and eliminate perceived flicker without compromising color stability, even at low brightness settings.



FlexScan monitors are certified by TÜV Rheinland to have low blue light and be flicker-free.

Auto Brightness Control

Always the Ideal Brightness

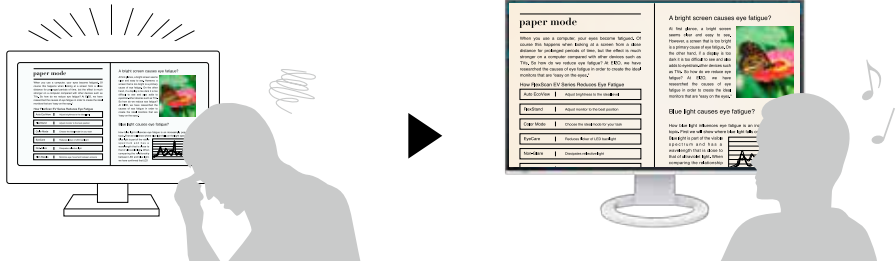
The Auto EcoView function automatically adjusts the brightness of your monitor according to ambient lighting. This ensures your monitor is always at the optimal brightness for reducing eye fatigue.



Blue Light Reduction

Paper Mode

Do you find that your screen is often too bright to read text comfortably? FlexScan monitors are equipped with Paper Mode which reduces blue light to simulate paper, making it less straining on your eyes. When used in conjunction with the Auto EcoView function, blue light is even further reduced.



— Brightness

— Contrast Ratio

— Color Temperature

>>

Blue Light

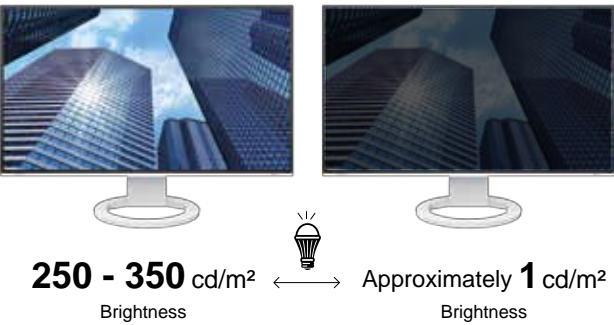
80%

Reduction

Stable Image Even at Low Brightness

Reduce Brightness to Approximately 1 cd/m²

Most FlexScan monitors can be adjusted to a brightness of approximately 1 cd/m² without negatively impacting the color or stability of the screen.



?

Visit Our Website

"The Latest on Computer Screens and Eye Fatigue"

>>>

?

Visit Our Website

"Designed to Protect Your Eyes"

>>>

The Perfect Position.

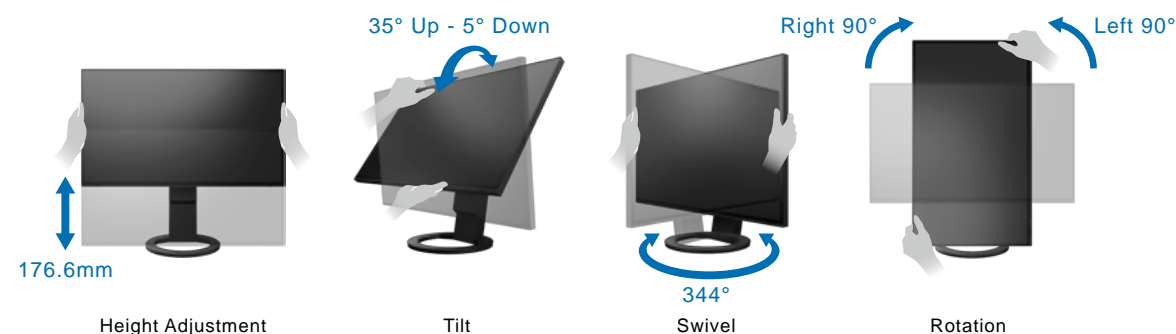


Versatile Stand

The stands feature height adjustment, tilt, and swivel, while saving space and remaining stylish. Quickly and smoothly adjust your monitor to the perfect position.

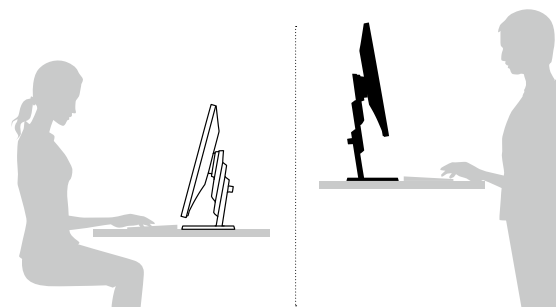
Stand movement range varies by model. See pages 22 - 25 for specifications of all monitors.

■ EV2795



Wide Height Adjustment Range

The ergonomic stand allows you to adjust the monitor to the most comfortable position suited for the workplace or home office.

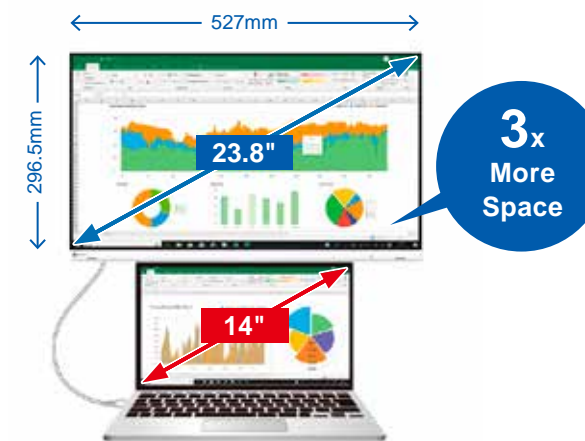


Space-Saving Positioning

For the most limited workspaces, a laptop can fit comfortably under the monitor with the stand at maximum height. This allows you to use the laptop as a second screen without taking up valuable desktop space.

Stand movement range varies by model. See pages 22 - 25 for specifications of all monitors.

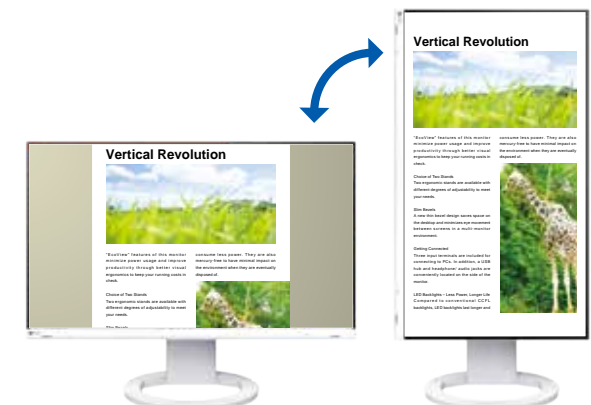
■ EV2480



Portrait Mode

View web pages and documents easily by switching the monitor to portrait mode simply by rotating the screen.

Stand movement range varies by model. See pages 22 - 25 for specifications of all monitors.

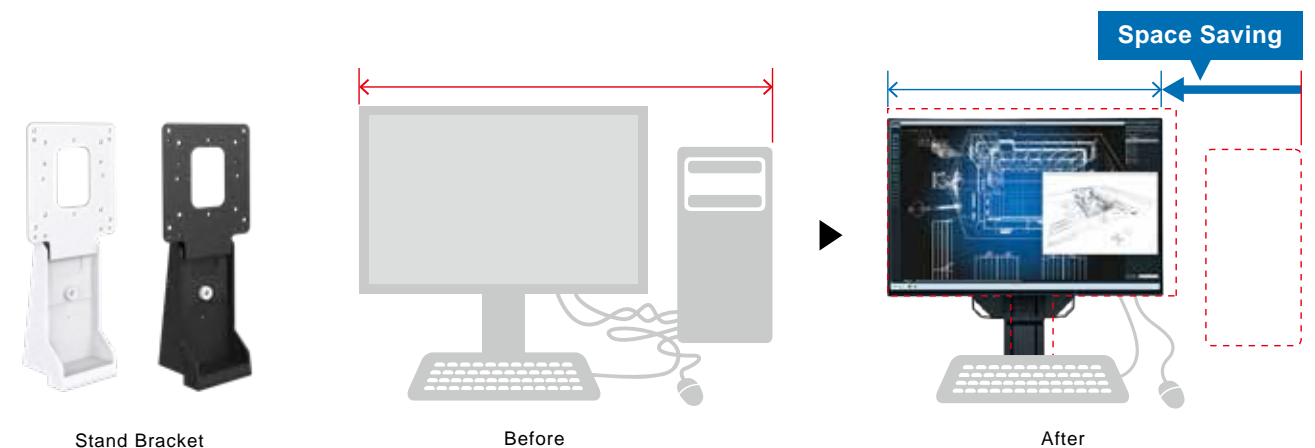


Free Up Your Workspace

VESA-compliant stand brackets let you easily mount a client terminal such as a thin client or mini PC to the back of the monitor. The space the client terminal previously occupied is now freed up so you can make better use of your desktop.

Even with the client terminal attached you can adjust the monitor's stand freely.

Please check EIZO website for supported models.



Visit Our Website

Case Studies: See how EIZO is used in a variety of environments

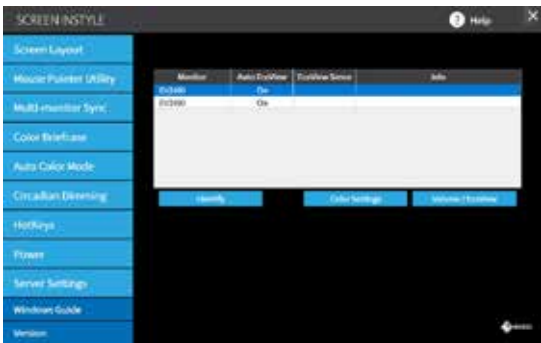


Intelligent Software to Work Better.

SCREEN INSTYLE

EIZO's free Screen InStyle software streamlines screen management of single and multi-monitor environments for a better working experience.

Available on both Windows and macOS operating systems.
See pages 22 - 25 for compatible monitors.



Automatically Change the Color Mode for Each Application

Auto Color Mode

FlexScan monitors have multiple color modes designed for different uses. Use the Auto Color Mode to assign a color mode to turn on when using specific applications such as those for writing documents, photo viewing, creating illustrations or watching movies. When an application is opened the screen will automatically switch to the assigned color mode, making manual switching unnecessary.



Color Briefcase

Effortlessly maintain your personalized screen preferences wherever you go. Color mode and display settings are automatically applied when you connect your laptop to a monitor supported by Screen InStyle, making it ideal for hot-desking and shared workspaces.



Organize Your Desktop to Increase Work Efficiency

Screen Layout

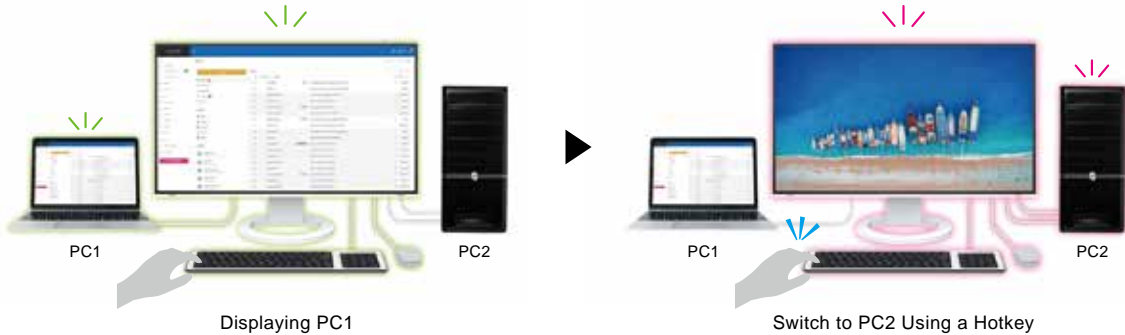
This function allows you to divide your desktop and arrange each program's window neatly across the screen, helping you work smarter and more efficiently.



Easily Switch Between Inputs / Color Modes

Assign Hotkeys for Switching Input Signals and Color Modes

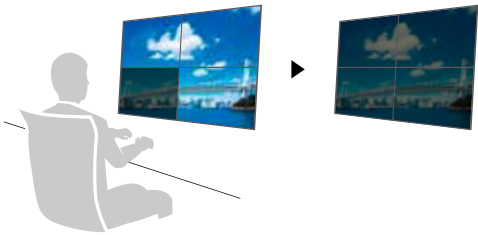
With the hotkey function, you can assign keyboard shortcuts to instantly switch between color modes or input signals from two PCs connected to your monitor.



Multi-Monitor Convenience

Synchronize Screen Adjustments

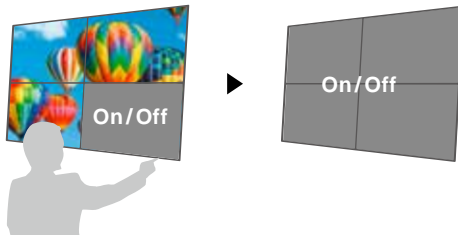
When using multiple monitors, save time by synchronizing all the monitors with each other. If you change the color mode, brightness or color temperature of one monitor, the rest will automatically change to the same.



On/Off All at Once

When one monitor's power is turned off, all other monitors will also turn off. Save energy by easily turning off all monitors at once.

Available on Windows operating systems only.



Screen InStyle Server

Effectively Monitor Asset Management

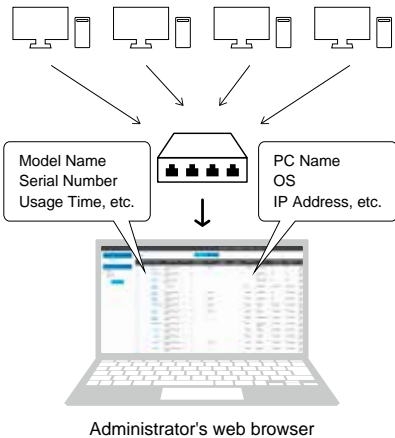
Screen InStyle Server is available on Windows operating systems only.

Automatically Receive Monitor or PC Information

With Screen InStyle Server receive information such as the model name and serial number of any monitor connected to your network. Additionally, see information from the computer that each monitor is connected to, such as the OS, IP address and computer name.

Control Settings on Multiple Monitors at Once

Easily manage multiple monitors by remotely controlling settings like color mode, brightness, and eco functions. You can centrally configure power settings for both networked monitors and PCs, including options to turn them off or enter sleep mode after a predefined period of inactivity. This contributes to meaningful energy savings across your organization.



Care for the Environment.

Leading the Way in Sustainability

EIZO is committed to environmentally conscious product development, from the manufacturing process to the user experience. FlexScan monitors are at the forefront of these efforts, supporting users and organizations concerned with sustainable procurement.



Certified Sustainable

FlexScan monitors are certified by worldwide comprehensive sustainability standards such as TCO Certified, ENERGY STAR®, and EPEAT.

Certification varies by model. See website for more details.



Energy Efficiency

Cut power consumption by as much as 60% using EcoView technologies. The Auto EcoView function automatically adjusts the screen's brightness according to changes in ambient light, while the EcoView Optimizer 2 function fine-tunes the balance between brightness and gain according to the content displayed on the screen, contributing to a smaller carbon footprint.



Low Environmental Impact Materials

The FlexScan lineup includes models that are made of more than 80% recycled plastic. This reduces the amount of plastic waste entering the environment, conserves resources, and promotes the reuse of materials to preserve the natural ecosystem.



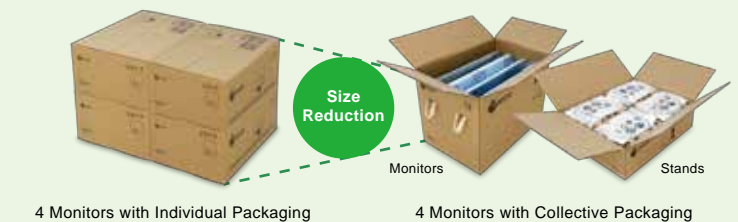
Eco-Conscious Packaging

Most monitors are safely packed using molded pulp made from recycled cardboard and newspaper. Their cables are also wrapped in paper instead of plastic bags.



Collective Packaging Options

Collective packaging options are available to support corporate sustainability. Multiple monitors are packaged in a single box, while the stands are packaged separately or excluded entirely, improving loading efficiency and streamlining installation.



Contribution to SDGs

As part of our sustainability initiatives, EIZO is contributing towards the United Nations' Sustainable Development Goals (SDGs).



Eco-Conscious Product Development

FlexScan embodies EIZO's commitment to sustainability through the use of recycled materials and low-impact components. The monitors are optimized for energy efficiency, contributing to lower greenhouse gas (GHG) emissions.



Workstyle Innovation and Productivity

FlexScan offers a versatile lineup and user-friendly features to support a wide range of workstyles. With reliable image quality and thoughtful design, FlexScan empowers business professionals to work more efficiently and comfortably.



[Visit Our Website](#)

["How Green is Your Monitor?" Eco Calculator](#)

[Learn more about EIZO Sustainable Monitors](#)

Extensive Market Reach



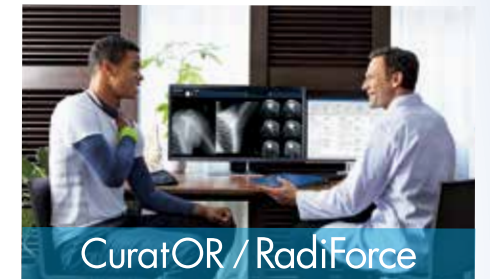
FlexScan

Business Enterprise



ColorEdge

Creative Work



CuratOR / RadiForce

Healthcare



DuraVision / VisionCore

Security / Infrastructure / Maritime



Raptor / Re/Vue / SafeGuard

Air Traffic Control

50+ Years of Expertise



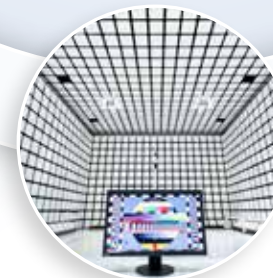
Visual Technology Company



Research and Development



Manufacturing



Quality Control



Customization



Global Reach

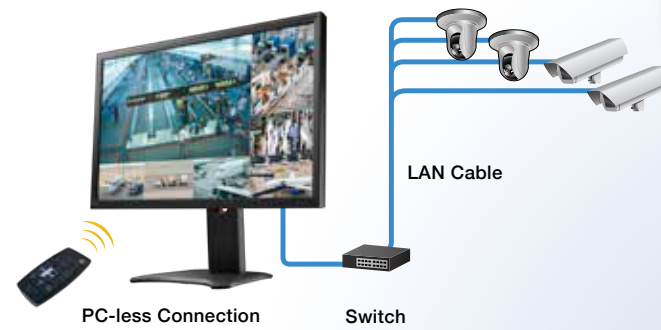
Innovative Solutions

Built-In Color Calibration Sensors

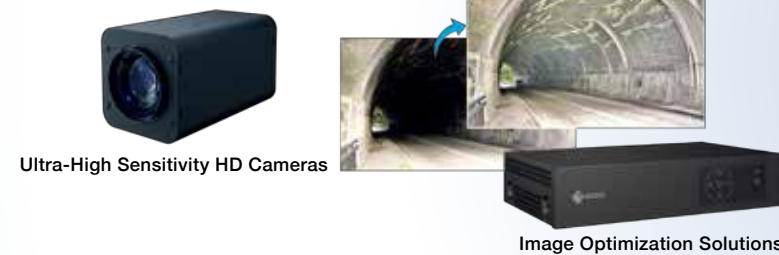


Automatically calibrates while you work

IP Decoding Solutions



Visibility Enhancement Technology



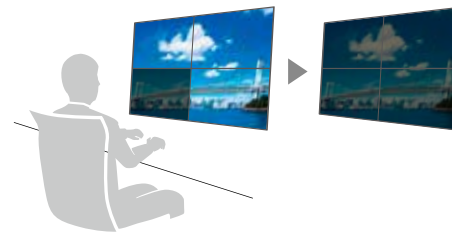
Market-Focused Cloud Solutions



Software for Improved Workflow



Use a single mouse across two PCs



Synchronized adjustment of multiple monitors



Simplified CMS with automatic software and printer settings adjustment

FlexScan
Specifications



EV4340X



EV3895



EV3450XC



EV3240X



EV2740X



EV2795



EV2495



EV2490



EV2740S



EV2720S

Premium Plus					
Model Variations	With Stand	Black	EV4340X-BK	EV3895-BK	EV3450XC-BK
		White	EV4340X-WT	EV3895-WT	EV3240X-WT
	Without Stand	Black	EV4340X-FBK	EV3895-FBK	EV3240X-FBK
		White	EV4340X-FWT	EV3895-FWT	EV3240X-FWT
Panel	Type		IPS	IPS	IPS
	Backlight		LED	LED	LED
	Size		42.5" (108.0 cm)	37.5" (95.3 cm)	31.5" (80.0 cm)
	Native Resolution		3840 x 2160 (16:9 aspect ratio)	3840 x 1600 (24:10 aspect ratio)	3440 x 1440 (21:9 aspect ratio)
	Viewable Image Size (H x V)		941.2 x 529.4 mm	879.7 x 366.5 mm	697.3 x 392.2 mm
	Pixel Pitch (H x V)		0.245 x 0.245 mm	0.229 x 0.229 mm	0.182 x 0.182 mm
	Pixel Density		104 ppi	111 ppi	140 ppi
	Display Colors		16.77 million	16.77 million	16.77 million
	Viewing Angles (H / V, typ.)		178° / 178°	178° / 178°	178° / 178°
	Brightness (typ.)		350 cd/m²	300 cd/m²	350 cd/m²
	Contrast Ratio (typ.)		1000:1	1000:1	2000:1
	Response Time (typ.)		5 ms (gray-to-gray)	5 ms (gray-to-gray)	5 ms (gray-to-gray)
Video Signals	Input Terminals		USB Type-C (DisplayPort Alt Mode, HDCP 2.3 / 1.3), DisplayPort (HDCP 2.3 / 1.3), HDMI (HDCP 2.3 / 1.4) x 2	USB Type-C (DisplayPort Alt Mode, HDCP 1.3), DisplayPort (HDCP 1.3), HDMI (HDCP 2.2 / 1.4) x 2	USB Type-C (DisplayPort Alt Mode, HDCP 2.3 / 1.3), DisplayPort (HDCP 2.3 / 1.3), HDMI (HDCP 2.3 / 1.4) x 2
	Output Terminals		-	-	-
	Upstream		USB 5Gbps: Type-B, USB 5Gbps: Type-C (DisplayPort Alt Mode, Power Delivery Source 94 W max.)	USB 5Gbps: Type-B x 2, USB 5Gbps: Type-C (DisplayPort Alt Mode, Power Delivery Source 85 W max.)	USB 5Gbps: Type-B, USB 5Gbps: Type-C (DisplayPort Alt Mode, Power Delivery Source 94 W max.)
	Downstream		USB 5Gbps: Type-A x 2, USB 5Gbps: Type-C (Type-C Current, 15 W max.)	USB 5Gbps: Type-A x 4	USB 5Gbps: Type-A x 3, USB 5Gbps: Type-C (Type-C Current, 15 W max.)
USB LAN Adapter			RJ-45 (1000BASE-T) Windows 11, Windows 10 (64-bit, 32-bit), macOS Sierra (10.12) or later	RJ-45 (1000BASE-T) Windows 11, Windows 10 (64-bit, 32-bit), macOS Sierra (10.12) or later	RJ-45 (1000BASE-T) Windows 11, Windows 10 (64-bit, 32-bit), macOS Sierra (10.12) or later
Audio	Speakers		4.0 W + 4.0 W	1.0 W + 1.0 W	2.0 W + 2.0 W
	Output Terminals		Headphones (Stereo mini jack)	Headphones (Stereo mini jack)	Headphones (Stereo mini jack), Line out (Stereo mini jack)
Power	Power Input		AC 100 - 240 V, 50 / 60 Hz	AC 100 - 240 V, 50 / 60 Hz	AC 100 - 240 V, 50 / 60 Hz
	Typical Power Consumption		31 W	28 W	18 W
	Maximum Power Consumption		243 W	194 W	196 W
	Power Save Mode		0.4 W	0.5 W or less	0.35 W
Features & Functions	Webcam		-	-	-
				5 megapixel, built-in microphone, Windows Hello supported	
	Preset Modes		User1, User2, sRGB, Paper, Movie, DICOM	User1, User2, sRGB, Paper, Movie, DICOM	User1, User2, sRGB, Paper, Movie, DICOM
	Automatic Brightness Control		Auto EcoView	Auto EcoView	Auto EcoView
Physical Specifications	Dimensions (Landscape, W x H x D)		966.8 x 631 x 225.2 mm	893.9 x 411 - 603.7 x 240 mm	819.5 x 414.5 - 609.5 x 242 - 250 mm
	Dimensions (Without Stand, W x H x D)		966.8 x 571 x 89.9 mm	893.9 x 398.2 x 109.8 mm	819.5 x 385 x 103.1 mm
	Net Weight		15.9 kg	13.2 kg	12.1 kg
	Net Weight (Without Stand)		15.2 kg	9.5 kg	9.2 kg
	Height Adjustment Range		-	192.7 mm	195 mm
	Tilt / Swivel		- / -	35° Up, 5° Down / 70°	35° Up, 5° Down / 90°
	Pivot		-	-	90° (clockwise)
	Hole Spacing (VESA Standard)		100 x 100 mm, 200 x 200 mm	100 x 100 mm	100 x 100 mm
Certifications & Standards (Please contact EIZO for the latest information.)			EPEAT Silver with Climate+, TÜV/ Ergonomics, TÜV/Low blue light content, TÜV/Flicker Free, TÜV/GS, RCM, CE, UKCA, CB, cTÜVus, FCC-B, CAN ICES (B), TÜV/S, PSE, VCCI-B, EPA ENERGY STAR, RoHS, WEEE, China RoHS, CCC	TCO Certified, generation 9, EPEAT Silver with Climate+, TÜV/Ergonomics, TÜV/Low blue light content, TÜV/ Flicker Free, TÜV/GS, RCM, CE, UKCA, CB, cTÜVus, FCC-B, CAN ICES (B), TÜV/S, PSE, VCCI-B, EPA ENERGY STAR, RoHS, WEEE, China RoHS, CCC, EAC	TCO Certified, generation 10, EPEAT Gold with Climate+, TÜV/Ergonomics, TÜV/Low blue light content, TÜV/ Flicker Free, TÜV/GS, RCM, CE, UKCA, CB, cTÜVus, FCC-B, CAN ICES (B), TÜV/S, PSE, VCCI-B, EPA ENERGY STAR, RoHS, WEEE, China RoHS, CCC
Dedicated Software	Monitor Control Utility Screen InStyle		Supported	Supported	Supported
Supplied Accessories (May vary by country. Please contact EIZO for details.)	Signal Cables		USB Type-C (2 m), DisplayPort (2 m)	USB Type-C (2 m), DisplayPort (2 m), HDMI (2 m)	USB Type-C (2 m), DisplayPort (2 m)
	Others		EV4340X: AC power cord (2 m), USB Type-A - USB Type-B cable (2 m), remote control, VESA cover, stand (L, R), stand mounting screw x 4, setup guide EV4340X-F: AC power cord (2 m), USB Type-A - USB Type-B cable (2 m), remote control, setup guide	AC power cord (2 m), USB Type-A - USB Type-B cable (2 m) x 2, connector cover, VESA mounting screw x 4, setup guide	AC power cord (2 m), setup guide
Warranty ¹			5 Years	5 Years	5 Years
Zero Bright Pixels ²			-	Yes	Yes
Dimensions Drawing (Unit: mm)					

Premium					
Model Variations	With Stand	Black	EV2740X-BK	EV2795-BK	EV2495-BK
		White	EV2740X-WT	EV2795-WT	EV2495-WT
	Without Stand	Black	EV2740X-FBK	EV2795-FBK	EV2495-FBK
		White	EV2740X-FWT	EV2795-FWT	EV2495-FWT
Panel	Type		IPS	IPS	IPS
	Backlight		LED	LED	LED
	Size		27.0" (68.5 cm)	27.0" (68.5 cm)	24.1" (61.1 cm)
	Native Resolution		3840 x 2160 (16:9 aspect ratio)	2560 x 1440 (16:9 aspect ratio)	1920 x 1200 (16:10 aspect ratio)
	Viewable Image Size (H x V)		596.7 x 335.7 mm	596.7 x 335.7 mm	518.4 x 324 mm
	Pixel Pitch (H x V)		0.155 x 0.155 mm	0.233 x 0.233 mm	0.270 x 0.270 mm
	Pixel Density		163 ppi	109 ppi	93 ppi
	Display Colors		16.77 million	16.77 million	16.77 million
	Viewing Angles (H / V, typ.)		178° / 178°	178° / 178°	178° / 178°
	Brightness (typ.)		350 cd/m²	350 cd/m²	250 cd/m²
	Contrast Ratio (typ.)		2000:1	1000:1	1000:1
	Response Time (typ.)		5 ms (gray-to-gray)	5 ms (gray-to-gray)	5 ms (gray-to-gray)
Video Signals	Input Terminals		USB Type-C (DisplayPort Alt Mode, HDCP 2.3 / 1.3), DisplayPort (HDCP 2.3 / 1.3), HDMI (HDCP 2.3 / 1.4) x 2	USB Type-C (DisplayPort Alt Mode, HDCP 1.3), DisplayPort (HDCP 1.3), HDMI (HDCP 1.4)	USB Type-C (DisplayPort Alt Mode, HDCP 1.3), DisplayPort (HDCP 1.3), HDMI (HDCP 1.4)
	Output Terminals		-	-	-
	Upstream		USB 5Gbps: Type-B, USB 5Gbps: Type-C (DisplayPort Alt Mode, Power Delivery Source 94 W max.)	USB Type-C (daisy chain) USB 5Gbps: Type-B, USB 5Gbps: Type-C (DisplayPort Alt Mode, Power Delivery Source 70 W max.)	USB Type-C (daisy chain) USB 5Gbps: Type-B, USB 5Gbps: Type-C (DisplayPort Alt Mode, Power Delivery Source 70 W max.)
	Downstream		USB 5Gbps: Type-A x 3, USB 5Gbps: Type-C (Type-C Current, 15 W max.)	USB 5Gbps: Type-A x 3, USB 5Gbps: Type-C (DisplayPort Alt Mode, Power Delivery Source 15 W max.)	USB 5Gbps: Type-A x 3, USB 5Gbps: Type-C (DisplayPort Alt Mode, Power Delivery Source 15 W max.)
USB LAN Adapter			RJ-45 (1000BASE-T) Windows 11, Windows 10 (64-bit, 32-bit), macOS Sierra (10.12) or later	RJ-45 (1000BASE-T) Windows 11, Windows 10 (64-bit, 32-bit), macOS Sierra (10.12) or later	RJ-45 (1000BASE-T) Windows 11, Windows 10 (64-bit, 32-bit), macOS Sierra (10.12) or later
Audio	Speakers		2.0 W + 2.0 W	1.0 W + 1.0 W	1.0 W + 1.0 W
	Output Terminals		Headphones (Stereo mini jack), Line out (Stereo mini jack)	Headphones (Stereo mini jack)	Headphones (Stereo mini jack)
Power	Power Input		AC 100 - 240 V, 50 / 60 Hz	AC 100 - 240 V, 50 / 60 Hz	AC 100 - 240 V, 50 / 60 Hz
	Typical Power Consumption		16 W	16 W	11 W
	Maximum Power Consumption		186 W	164 W	155 W
	Power Save Mode		0.35 W	0.5 W or less	0.5 W or less
Features & Functions	Webcam		-	-	-
	Preset Modes		User1, User2, sRGB, Paper, Movie, DICOM	User1, User2, sRGB, Paper, Movie, DICOM	User1, User2, sRGB, Paper, Movie, DICOM
	Automatic Brightness Control		Auto EcoView	Auto EcoView	Auto EcoView
Physical Specifications	Dimensions (Landscape, W x H x D)		611.6 x 370.8 - 565.4 x 242 - 250.1 mm	611.4 x 368.6 - 545.2 x 230 mm	531 x 356.2 - 538.4 x 230 mm
	Dimensions (Without Stand, W x H x D)		611.6 x 358.8 x 60.5 mm	611.4 x 356.6 x 56 mm	531 x 344.2 x 53.7 mm
	Net Weight		8.2 kg	8.5 kg	7.6 kg
	Net Weight (Without Stand)		5.5 kg	5.7 kg	4.9 kg
	Height Adjustment Range		195 mm	176.6 mm	182.2 mm
	Tilt / Swivel		35° Up, 5° Down / 90°	35° Up, 5° Down / 344°	35° Up, 5° Down / 344°
	Pivot		90° (clockwise)	90° (both clockwise and counter clockwise)	90° (both clockwise and counter clockwise)
	Hole Spacing (VESA Standard)		100 x 100 mm	100 x 100 mm	100 x 100 mm
Certifications & Standards (Please contact EIZO for the latest information.)			TCO Certified, generation 10, EPEAT Gold with Climate+, TÜV/Ergonomics, TÜV/Low blue light content, TÜV/ Flicker Free, TÜV/GS, RCM, CE, UKCA, CB, cTÜVus, FCC-B, CAN ICES (B), TÜV/S, PSE, VCCI-B, EPA ENERGY STAR, RoHS, WEEE, China RoHS, CCC	TCO Certified, generation 10, EPEAT Gold with Climate+, TÜV/Ergonomics, TÜV/Low blue light content, TÜV/Flicker Free, TÜV/GS, RCM, CE, UKCA, CB, cTÜVus, FCC-B, CAN ICES (B), TÜV/S, PSE, VCCI-B, EPA ENERGY STAR, RoHS, WEEE, China RoHS, CCC, EAC	TCO Certified, generation 10, EPEAT Gold with Climate+, TÜV/Ergonomics, TÜV/Low blue light content, TÜV/Flicker Free, TÜV/GS, RCM, CE, UKCA, CB, cTÜVus, FCC-B, CAN ICES (B), TÜV/S, PSE, VCCI-B, EPA ENERGY STAR, RoHS, WEEE, China RoHS, CCC, EAC
Dedicated Software	Monitor Control Utility Screen InStyle		Supported	Supported	Supported
Supplied Accessories (May vary by country. Please contact EIZO for details.)	Signal Cables		USB Type-C (1.5 m)	USB Type-C (2 m)	USB Type-C (2 m)
	Others		AC power cord (2 m), setup guide	AC power cord (2 m), setup guide	AC power cord (2 m), setup guide
Warranty ¹			5 Years	5 Years	5 Years
Zero Bright Pixels ²			Yes	Yes	Yes
Dimensions Drawing (Unit: mm)					

With current LCD technology, a panel may contain a limited number of missing or flickering pixels. If the monitor is left on continuously over a long period of time, dark smudges or burn-in may appear.

To maximize the life of the monitor, we recommend the monitor be turned off periodically.

¹ Usage time is limited to 30,000 hours. ² 6 months from the date of purchase.

FlexScan
Specifications



EV2485



EV2480



EV2410R



EV2400R



EV2360



S2134



S1934



S1734



S1504

			New Standard		Basic	
Model Variations	With Stand	Black	EV2485-BK	EV2480-BK	EV2410R-BK	EV2400R-BK
		White	EV2485-WT	EV2480-WT	EV2410R-WT	EV2400R-WT
		Gray	-	-	-	-
	Without Stand	Black	EV2485-FBK	EV2480-FBK	EV2410R-FBK	EV2400R-FBK
		White	EV2485-FWT	EV2480-FWT	EV2410R-FWT	EV2400R-FWT
	Gray	-	-	-	-	
Panel	Type	IPS	IPS	IPS	IPS	
	Backlight	LED	LED	LED	LED	
	Size	24.1" (61.1 cm)	23.8" (60.5 cm)	24.1" (61.1 cm)	23.8" (60.5 cm)	
	Native Resolution	1920 x 1200 (16:10 aspect ratio)	1920 x 1080 (16: 9 aspect ratio)	1920 x 1200 (16:10 aspect ratio)	1920 x 1080 (16:9 aspect ratio)	
	Viewable Image Size (H x V)	518.4 x 324 mm	527 x 296.5 mm	518.4 x 324 mm	527 x 296.5 mm	
	Pixel Pitch (H x V)	0.270 x 0.270 mm	0.275 x 0.275 mm	0.270 x 0.270 mm	0.275 x 0.275 mm	
	Pixel Density	94 ppi	93 ppi	94 ppi	93 ppi	
	Display Colors	16.77 million	16.77 million	16.77 million	16.77 million	
	Viewing Angles (H / V, typ.)	178° / 178°	178° / 178°	178° / 178°	178° / 178°	
	Brightness (typ.)	350 cd/m²	250 cd/m²	350 cd/m²	350 cd/m²	
	Contrast Ratio (typ.)	1000:1	1000:1	1300:1	1500:1	
Video Signals	Response Time (typ.)	5 ms (gray-to-gray)	5 ms (gray-to-gray)	5 ms (gray-to-gray)	5 ms (gray-to-gray)	
	Input Terminals	USB Type-C (DisplayPort Alt Mode, HDCP 1.3), DisplayPort (HDCP 1.3), HDMI (HDCP 1.4)	USB Type-C (DisplayPort Alt Mode, HDCP 1.3), DisplayPort (HDCP 1.3), HDMI (HDCP 1.4)	DisplayPort (HDCP 1.3), HDMI (HDCP 1.4), DVI-D (HDCP 1.4), D-Sub mini 15 pin	DisplayPort (HDCP 1.3), HDMI (HDCP 1.4)	
	Output Terminals	-	-	-	-	
USB	Upstream	USB 5Gbps: Type-C (DisplayPort Alt Mode, Power Delivery Source 70 W max.)	USB 5Gbps: Type-C (DisplayPort Alt Mode, Power Delivery Source 70 W max.)	USB 5Gbps: Type-B	USB 5Gbps: Type-B	
	Downstream	USB 5Gbps: Type-A x 4	USB 5Gbps: Type-A x 4	USB 5Gbps: Type-A x 4	USB 5Gbps: Type-A x 2 USB 2.0: Type-A x 2	
	USB LAN Adapter	-	-	-	-	
Audio	Speakers	1.0 W + 1.0 W	1.0 W + 1.0 W	1.0 W + 1.0 W	1.0 W + 1.0 W	
	Output Terminals	Headphones (Stereo mini jack)	Headphones (Stereo mini jack)	Headphones (Stereo mini jack)	-	
Power	Power Input	AC 100 - 240 V, 50 / 60 Hz	AC 100 - 240 V, 50 / 60 Hz	AC 100 - 240 V, 50 / 60 Hz	AC 100 - 240 V, 50 / 60 Hz	
	Typical Power Consumption	12 W	11 W	8 W	8 W	
	Maximum Power Consumption	146 W	142 W	54 W	43 W	
	Power Save Mode	0.5 W or less	0.5 W or less	0.5 W or less	0.37 W	
Features & Functions	Webcam	-	-	-	-	
	Preset Modes	User1, User2, sRGB, Paper, Movie, DICOM	User1, User2, sRGB, Paper, Movie, DICOM	User1, User2, sRGB, Paper, Movie, DICOM	User1, User2, sRGB, Eco, Paper, Movie, DICOM	
	Automatic Brightness Control	Auto EcoView	Auto EcoView	Auto EcoView	Auto EcoView	
Physical Specifications	Dimensions (Landscape, W x H x D)	531 x 356.2 - 538.4 x 230 mm	537.8 x 332.4 - 523.6 x 230 mm	531 x 358.4 - 488.3 x 233 mm	537.8 x 333.6 - 473.6 x 233 mm	
	Dimensions (Without Stand, W x H x D)	531 x 344.2 x 53.7 mm	537.8 x 320.4 x 57.4 mm	531 x 345.2 x 57 mm	537.8 x 317.5 x 57 mm	
	Net Weight	7.6 kg	7.4 kg	6.0 kg	5.6 kg	
	Net Weight (Without Stand)	4.9 kg	4.7 kg	3.9 kg	3.5 kg	
	Height Adjustment Range	182.2 mm	191.2 mm	129.9 mm	140 mm	
	Tilt / Swivel	35° Up, 5° Down / 344°	35° Up, 5° Down / 344°	35° Up, 5° Down / 344°	35° Up, 5° Down / 344°	
	Pivot	90° (both clockwise and counter clockwise)	90° (both clockwise and counter clockwise)	90° (both clockwise and counter clockwise)	90° (both clockwise and counter clockwise)	
	Hole Spacing (VESA Standard)	100 x 100 mm	100 x 100 mm	100 x 100 mm	100 x 100 mm	
Certifications & Standards (Please contact EIZO for the latest information.)		TCO Certified, generation 10, EPEAT Gold with Climate+, TÜV/Ergonomics, TÜV/Low blue light content, TÜV/ Flicker Free, TÜV/GS, RCM, CE, UKCA, CB, cTÜVus, FCC-B, CAN ICES (B), TÜV/S, PSE, VCCI-B, EPA ENERGY STAR, RoHS, WEEE, China RoHS, CCC, EAC	TCO Certified, generation 10, EPEAT Gold with Climate+, TÜV/Ergonomics, TÜV/Low blue light content, TÜV/ Flicker Free, TÜV/GS, RCM, CE, UKCA, CB, cTÜVus, FCC-B, CAN ICES (B), TÜV/S, PSE, VCCI-B, EPA ENERGY STAR, RoHS, WEEE, China RoHS, CCC, EAC	TCO Certified, generation 10, EPEAT Gold with Climate+, TÜV/Ergonomics, TÜV/Low blue light content, TÜV/ Flicker Free, TÜV/GS, RCM, CE, UKCA, CB, cTÜVus, FCC-B, CAN ICES (B), TÜV/S, PSE, VCCI-B, EPA ENERGY STAR, RoHS, WEEE, China RoHS, CCC	TCO Certified, generation 10, EPEAT Gold with Climate+, TÜV/Ergonomics, TÜV/Low blue light content, TÜV/ Flicker Free, TÜV/GS, RCM, CE, UKCA, CB, cTÜVus, FCC-B, CAN ICES (B), TÜV/S, PSE, VCCI-B, EPA ENERGY STAR, RoHS, WEEE, China RoHS, CCC	
Dedicated Software	Monitor Control Utility Screen InStyle	Supported	Supported	Supported	Supported	
Supplied Accessories (May vary by country. Please contact EIZO for details.)		Signal Cables	USB Type-C (2 m)	USB Type-C (2 m)	DisplayPort (2 m)	DisplayPort (2 m)
		Others	AC power cord (2 m), setup guide	AC power cord (2 m), setup guide	AC power cord (2 m), USB Type-A - USB Type-B cable (2 m), setup guide	AC power cord (2 m), USB Type-A - USB Type-B cable (2 m), setup guide
Warranty ¹		5 Years	5 Years	5 Years	5 Years	
Zero Bright Pixels ²		Yes	Yes	Yes	Yes	
Dimensions Drawing (Unit: mm)						

	Square			
EV2360-BK	S2134-HBK	S1934-HBK (Height Adjustable Stand) S1934-TBK (Tilt Stand)	S1734-HBK (Height Adjustable Stand) S1734-TBK (Tilt Stand)	S1504-TBK
EV2360-WT	-	-	-	-
-	S2134-HGY	S1934-HGY (Height Adjustable Stand) S1934-TGY (Tilt Stand)	S1734-HGY (Height Adjustable Stand) S1734-TGY (Tilt Stand)	S1504-TGY
EV2360-FBK	S2134-FBK	S1934-FBK	S1734-FBK	S1504-FBK
EV2360-FWT	-	-	-	-
-	S2134-FGY	S1934-FGY	S1734-FGY	S1504-FGY
IPS	IPS	IPS	IPS	VA
LED	LED	LED	LED	LED
22.5" (57.2 cm)	21.3" (54.0 cm)	19" (48.0 cm)	17.0" (43.3 cm)	15.0" (38.0 cm)
1920 x 1200 (16:10 aspect ratio)	1600 x 1200 (4:3 aspect ratio)	1280 x 1024 (5:4 aspect ratio)	1280 x 1024 (5:4 aspect ratio)	1024 x 768 (4:3 aspect ratio)
488.2 x 297.2 mm	432 x 324 mm	374.8 x 299.8 mm	337.9 x 270.3 mm	304.1 x 228.1 mm
0.254 x 0.248 mm	0.270 x 0.270 mm	0.293 x 0.293 mm	0.264 x 0.264 mm	0.297 x 0.297 mm
101 ppi	94 ppi	87 ppi	96 ppi	86 ppi
16.77 million	16.77 million	16.77 million	16.77 million	16.77 million
178° / 178°	178° / 178°	178° / 178°	178° / 178°	176° / 176°
250 cd/m ²	500 cd/m ²	250 cd/m ²	250 cd/m ²	400 cd/m ²
1000:1	1800:1	1000:1	1000:1	2000:1
5 ms (gray-to-gray)	6 ms (gray-to-gray)	14 ms (gray-to-gray)	5 ms (gray-to-gray)	23 ms (black-white-black)
DisplayPort (HDCP 1.3), HDMI (HDCP 1.4), D-Sub mini 15 pin	DisplayPort (HDCP 1.3), DVI-D (HDCP 1.4), D-Sub mini 15 pin	DisplayPort (HDCP 1.3), DVI-D (HDCP 1.4), D-Sub mini 15 pin	DVI-D (HDCP 1.4), D-Sub mini 15 pin	DVI-D, D-Sub mini 15 pin
-	-	-	-	-
USB 5Gbps: Type-B	USB 2.0: Type-B	-	-	-
USB 5Gbps: Type-A x 2	USB 2.0: Type-A x 2	-	-	-
-	-	-	-	-
1.0 W + 1.0 W	-	0.5 W + 0.5 W	-	0.5 W + 0.5 W
Headphones (Stereo mini jack)	-	Headphones (Stereo mini jack)	-	-
AC 100 - 240 V, 50 / 60 Hz	AC 100 - 240 V, 50 / 60 Hz	AC 100 - 240 V, 50 / 60 Hz	AC 100 - 240 V, 50 / 60 Hz	AC 100 - 240 V, 50 / 60 Hz
11 W	13 W	9 W	6 W	5 W
37 W	42 W	21 W	13 W	14 W
0.5 W or less	0.5 W or less	0.5 W or less	0.5 W	0.5 W or less
-	-	-	-	-
User1, User2, sRGB, Paper, Movie, DICOM	User1, User2, sRGB, Paper, Movie, DICOM	User1, User2, sRGB, Paper, DICOM	User1, User2, sRGB, Paper	User1, User2, sRGB, Paper
Auto EcoView	Auto EcoView	Auto EcoView	Auto EcoView	Auto EcoView
499 x 333.9 - 473.9 x 233 mm	465 x 453 - 535 x 208.5 mm	S1934-H: 405 x 406.5 - 506.5 x 205 mm S1934-T: 405 x 414 x 205 mm	S1734-H: 367 x 391.5 - 491.5 x 204.6 mm S1734-T: 367 x 383.8 x 188 mm	346 x 349 x 157 mm
499 x 321.3 x 53.6 mm	465 x 361 x 64 mm	405 x 334 x 61.5 mm	367 x 304 x 59 mm	346 x 280 x 69 mm
5.5 kg	8.1 kg	S1934-H: 5.6 kg S1934-T: 4.6 kg	S1734-H: 5.1 kg S1734-T: 4.1 kg	4.7 kg
3.4 kg	5.1 kg	3.8 kg	3.3 kg	3.4 kg
140 mm	82 mm	S1934-H: 100 mm S1934-T: -	S1734-H: 100 mm S1734-T: -	-
35° Up, 5° Down / 344°	40° Up, 0° Down / 35° Right, 35° Left	S1934-H: 30° Up, 0° Down / 35° Right, 35° Left S1934-T: 30° Up, 5° Down / -	S1734-H: 30° Up, 0° Down / 35° Right, 35° Left S1734-T: 30° Up, 5° Down / -	30° Up, 0° Down / -
90° (both clockwise and counter clockwise)	90° (clockwise)	S1934-H: 90° (clockwise) S1934-T: -	S1734-H: 90° (clockwise) S1734-T: -	-
100 x 100 mm	100 x 100 mm	100 x 100 mm	100 x 100 mm	100 x 100 mm, 75 x 75 mm
TCO Certified, generation 9, EPEAT Silver with Climate+, TÜV/Ergonomics, TÜV/Low blue light content, TÜV/ Flicker Free, TÜV/GS, RCM, CE, UKCA, CB, cTÜVus, FCC-B, CAN ICES (B), TÜV/S, PSE, VCCI-B, EPA ENERGY STAR, RoHS, WEEE, China RoHS, CCC, EAC	TÜV/Ergonomics, TÜV/GS, RCM, CE, UKCA, CB, cTÜVus, FCC-B, CAN ICES (B), TÜV/S, VCCI-B, EPA ENERGY STAR, RoHS, WEEE, China RoHS, CCC, EAC	TÜV/Ergonomics, TÜV/GS, RCM, CE, UKCA, CB, cTÜVus, FCC-B, CAN ICES (B), TÜV/S, VCCI-B, EPA ENERGY STAR, RoHS, WEEE, China RoHS, CCC, EAC	TÜV/Ergonomics, TÜV/GS, RCM, CE, UKCA, CB, cTÜVus, FCC-B, CAN ICES (B), TÜV/S, VCCI-B, EPA ENERGY STAR, RoHS, WEEE, China RoHS, CCC	TÜV/Ergonomics, TÜV/GS, RCM, CE, UKCA, CB, cTÜVus, FCC-B, CAN ICES (B), TÜV/S, PSE, VCCI-B, RoHS, WEEE, China RoHS, CCC
Supported	-	-	-	-
DisplayPort (2 m) AC power cord (2 m), USB Type-A - USB Type-B cable (2 m), setup guide	DVI-D (2 m) , D-Sub mini 15 pin (1.8 m) AC power cord (2 m), USB Type-A - USB Type-B cable (1.8 m), setup guide	DVI-D (2 m), D-Sub mini 15 pin (1.8 m) AC power cord (2 m), audio cable (2.1 m), setup guide	DVI-D (2 m), D-Sub mini 15 pin (1.8 m) AC power cord (2 m), setup guide	DVI-D (2 m) , D-Sub mini 15 pin (1.8 m) AC power cord (2 m), audio cable (2.1 m), setup guide
5 Years	5 Years	5 Years	5 Years	5 Years
Yes	-	-	-	-

With current LCD technology, a panel may contain a limited number of missing or flickering pixels. If the monitor is left on continuously over a long period of time, dark smudges or burn-in may appear.
To maximize the life of the monitor, we recommend the monitor be turned off periodically.
¹ Usage time is limited to 30,000 hours. ² 6 months from the date of purchase.

EIZO Corporation

153 Shimokashiwano, Hakusan, Ishikawa 924-8566 Japan
Phone +81-76-277-6794

<https://www.eizoglobal.com>

EIZO, the EIZO Logo, FlexScan, Screen InStyle, ColorEdge, CuratOR, RadiForce, Raptor, ReVue, and SafeGuard are trademarks or registered trademarks of EIZO Corporation in Japan and other countries. USB Type-C is a registered trademark of USB Implementers Forum, Inc. DisplayPort is a trademark of the Video Electronics Standards Association in the United States and other countries. The terms HDMI, HDMI High-Definition Multimedia Interface, HDMI trade dress and the HDMI Logos are trademarks or registered trademarks of HDMI Licensing Administrator, Inc. Windows and Windows Hello are registered trademarks of Microsoft Corporation in the United States and other countries. macOS is a trademark of Apple Inc. ENERGY STAR is a registered trademark of the United States Environmental Protection Agency in the United States and other countries. DICOM is the registered trademark of the National Electrical Manufacturers Association for its standards publications relating to digital communications of medical information. All other company names, product names, and logos are trademarks or registered trademarks of their respective owners.

Some screen images are used with permission from Microsoft. Specifications are subject to change without notice.

Copyright © 2025 EIZO Corporation. All rights reserved. (251102)

