



Installation Guide

ColorNavigator 7

Color Management Software

Version 7.0

Important

Please read this Installation Guide carefully to familiarize yourself with safe and effective usage.

-
- The latest product information including this Installation Guide can be checked on our web site.

www.eizoglobal.com

No part of this manual may be reproduced, stored in a retrieval system, or transmitted, in any form or by any means, electronic, mechanical, or otherwise, without the prior written permission of EIZO Corporation. EIZO Corporation is under no obligation to hold any submitted material or information confidential unless prior arrangements are made pursuant to EIZO Corporation's receipt of said information. Although every effort has been made to ensure that this manual provides up-to-date information, please note that EIZO monitor specifications are subject to change without notice.

CONTENTS

CONTENTS	3
Installation Procedure	4
Mac	4
Windows	5
Linux	5
How to Open the Main Window	6
Adjustment Preparation	6
Mac	7
Windows 10	9
Windows 8.1	11
Windows 7	13
Linux	14
Guide for Basic Use	15
Uninstall	15
Mac	15
Windows	16
Linux	16

Installation Procedure

Attention

- Be sure to shut down all running applications before executing installation.

Note

- ColorNavigator 6, ColorNavigator NX, and ColorNavigator 7 cannot be concurrently installed in the same environment. Please choose one of these to use.
 - When ColorNavigator 7 is installed to an environment in which ColorNavigator 6 or ColorNavigator NX is installed, the existing software will be uninstalled.
 - When upgrading from ColorNavigator 6, the targets used in ColorNavigator 6 will be carried over to ColorNavigator 7.
-

Mac

.....

1. Double-click the downloaded “ColorNavigator7xx.pkg” file

The installer starts up.

2. Install the software

Follow the instructions to install the software.

Attention

- A “Requesting access to control “System Events”” message will appear depending on the environment. Since it is required in order to enable the resident function (ColorNavigator Agent) of ColorNavigator 7, click “OK”.
-

Windows

Attention

- A user account with the “Administrator” authority is required.
- Please consult your system administrator for the authority setting of your account.

1. Double-click the downloaded “CN7xx_Setup.exe” file

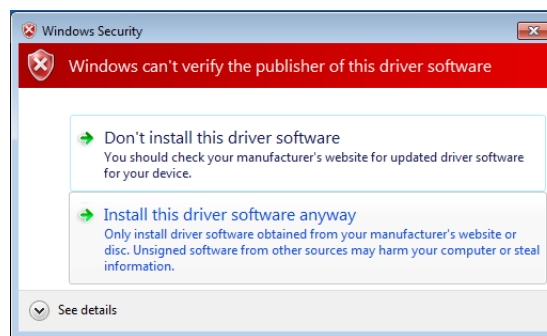
The installer starts up.

2. Install the software

Follow the instructions to install the software.

Attention

- The “Windows Security” dialog box may appear several times when you install the software. If this dialog box is displayed, select “Install this driver software anyway”, and proceed with the installation until the dialog box is no longer displayed.



Linux

Note

- Contact your local EIZO representative about downloading the Linux version of the installer.

1. After unzipping the downloaded file, run “install.sh”

The installer starts up.

2. Install the software

Follow the instructions to install the software.

Attention

- A user account with the root authority is required.
- If using the X-Rite i1 Pro, it is necessary to install the following package ahead of time.
 - ld-linux.so.2
 - libusb.i686

How to Open the Main Window

Adjustment Preparation

1. Connect the monitor to the computer with a USB cable
2. When using a measurement device, connect the measurement device to the main unit of the PC, or to the USB downstream port of the monitor
3. Before performing monitor adjustment, turn on both the monitor and the computer (warming up)

Note

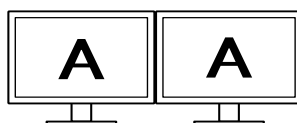
- See the User's Manual of the monitor for the time required for warming up.
 - SelfCorrection requires a warming-up that takes 60 minutes or more.
-

Attention

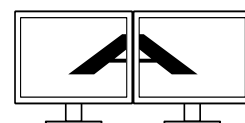
- Do not remove the USB cable of the monitor or measurement device while ColorNavigator is operating. Doing so may result in system freeze or software malfunction.
- When multiple monitors are connected, each monitor should display an independent screen. Displaying the same screen on each monitor or across multiple monitors prevents adjustment using the ColorNavigator software. For details of how to change the settings, see the User's Manual of the graphics board.



Independent screen on each monitor (OK)



Same screen on each monitor (NG)



A screen over the multiple monitors (NG)

- When using ColorNavigator with a monitor and laptop PC connected, settings for mirroring / duplicating displays must be disabled in OS settings. Adjustment using ColorNavigator is not possible if identical screens are displayed on the monitor and laptop PC.



Independent screen on the monitor and laptop PC monitor (OK)



Same screen on the monitor and laptop PC monitor (NG)
(Mirroring / duplicating)

Note

- At the initial startup of ColorNavigator, a dialog box asking for your participation in the "Quality Improvement Program" will be displayed. Select either "Yes, I want to participate in the program" or "No, I don't want to participate in the program".
 - ColorNavigator is the resident software by default (ColorNavigator Agent).
 - When connecting multiple monitors that are adjustable with ColorNavigator, the monitor to be adjusted must be selected.
-

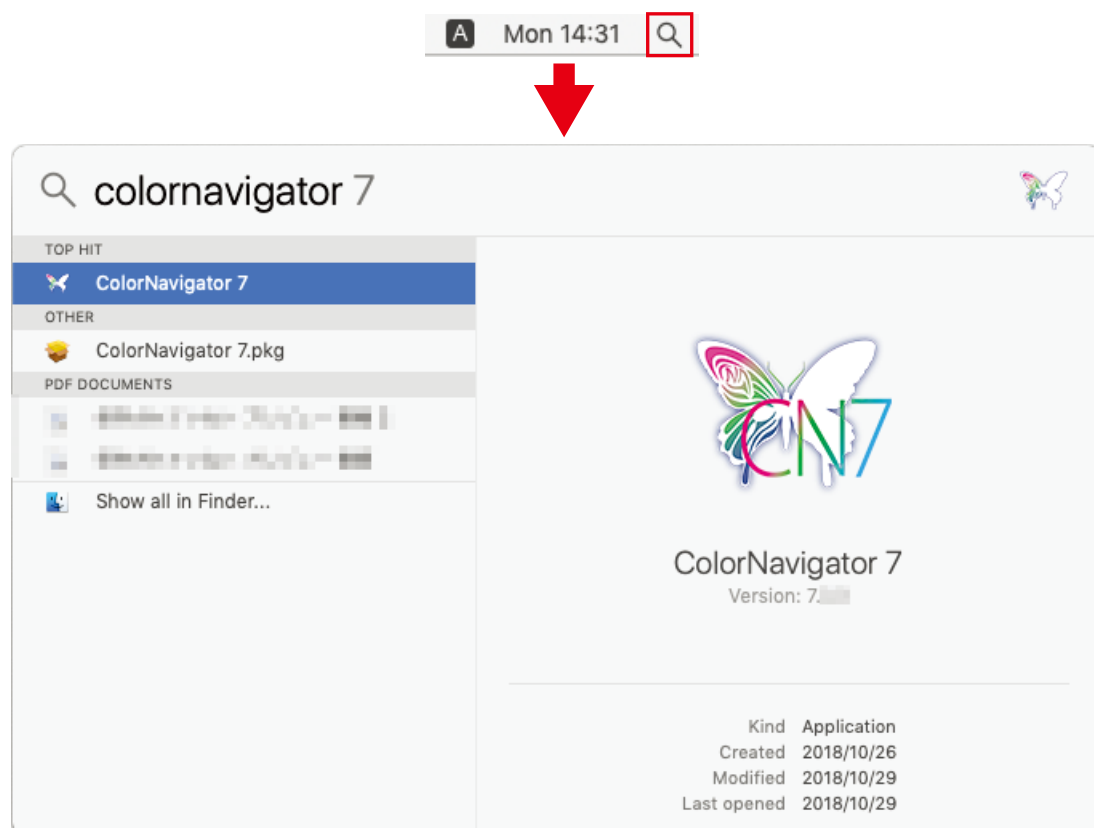
Mac

The main window can be opened with any of the following methods.

- Double-click the “ColorNavigator 7” icon inside the “Application” folder
- Click the LaunchPad icon on the Dock, enter “ColorNavigator 7” into the search area, and click the “ColorNavigator 7” icon displayed in the search results



- Click the search icon on the menu bar, open the Spotlight search window, enter “ColorNavigator 7”, and then click the “ColorNavigator 7” icon displayed in the search results

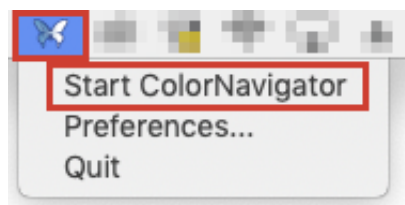


The ColorNavigator icon appears on the menu bar, and the main window opens.



If the main window does not open

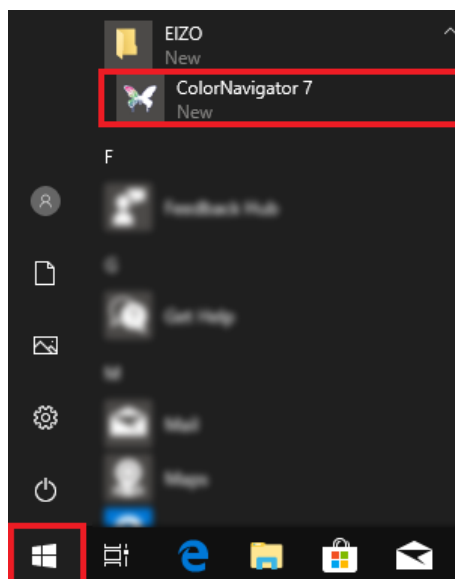
1. Right-click the ColorNavigator icon on the menu bar to open the menu
2. Select "Start ColorNavigator"



Windows 10

The main window can be opened with any of the following methods.

- Click “Start” - “All apps” - “EIZO” - “ColorNavigator 7”



- Double-click the “ColorNavigator 7” icon on the desktop.



Large icons

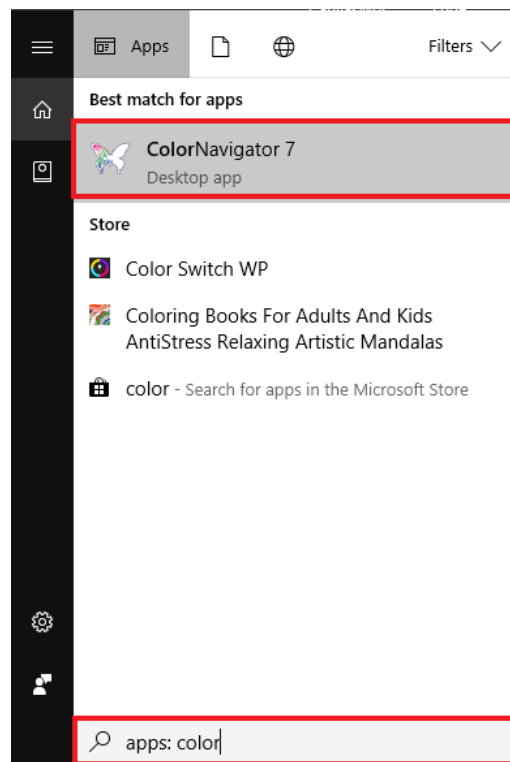


Medium icons

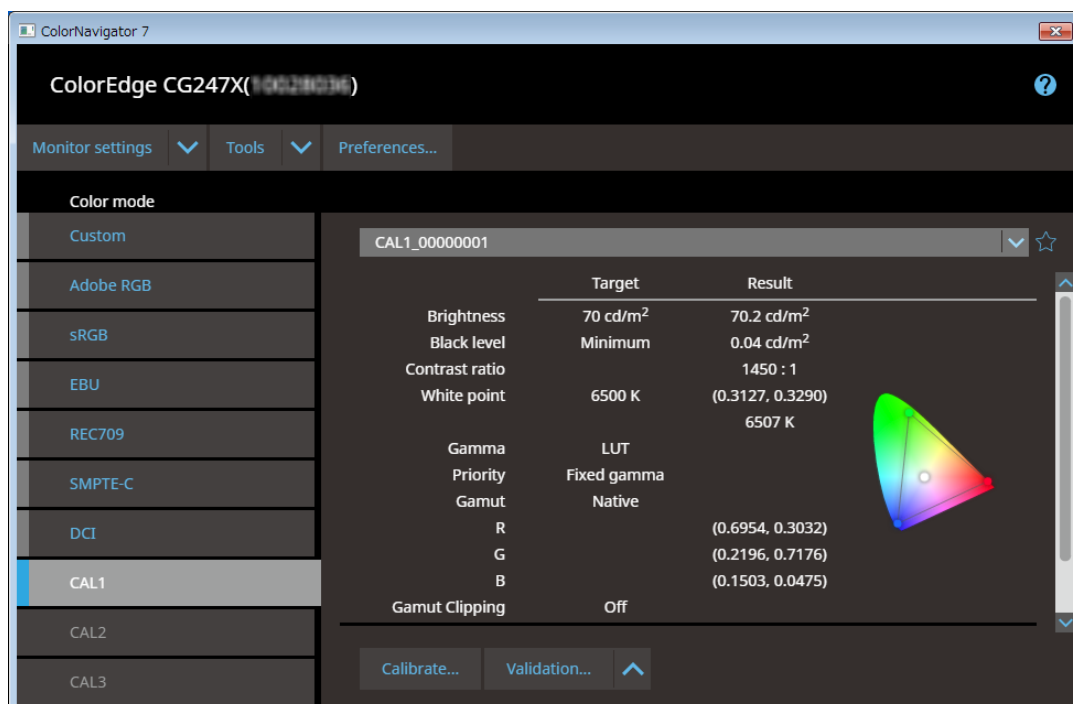


Small icons

- After selecting “apps” in Windows file search, enter “ColorNavigator 7” and click the “ColorNavigator 7” icon displayed in the search results

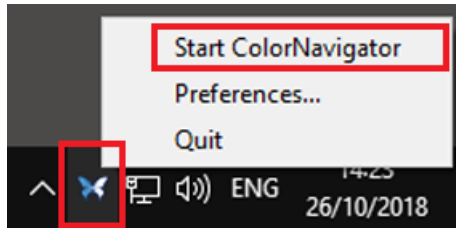


The ColorNavigator icon appears on the task tray, and the main window opens.



If the main window does not open

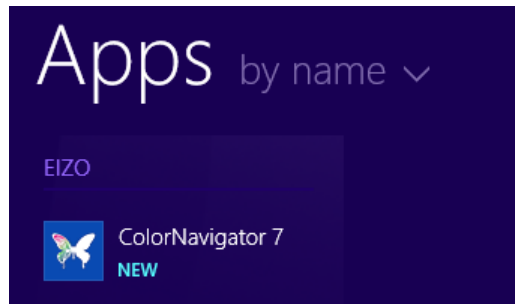
1. Right-click the ColorNavigator icon on the task tray to open the menu
2. Select "Start ColorNavigator"



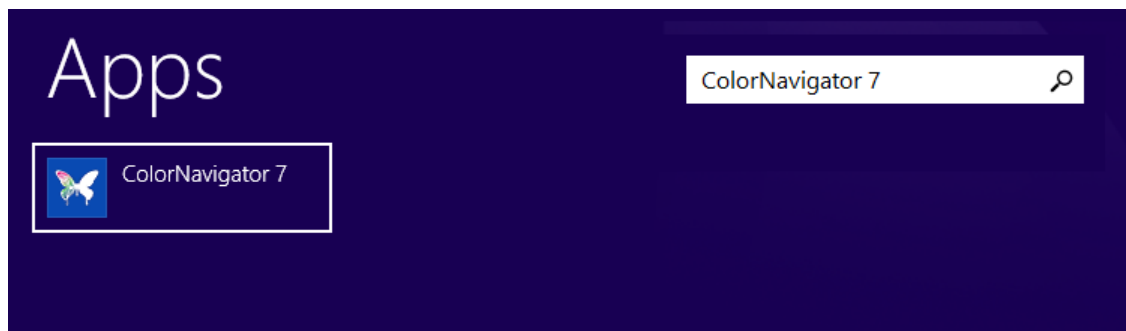
Windows 8.1

The main window can be opened with any of the following methods.

- Click the  button on the "Start" screen, and click "Apps" - "ColorNavigator 7"



If it is difficult to find, try scrolling, or enter "ColorNavigator 7" into the search box and click the "ColorNavigator 7" icon displayed in the search results.



- Display the desktop and double-click the “ColorNavigator 7” icon



Large icons

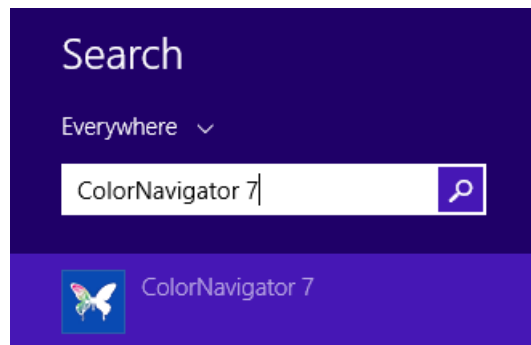


Medium icons

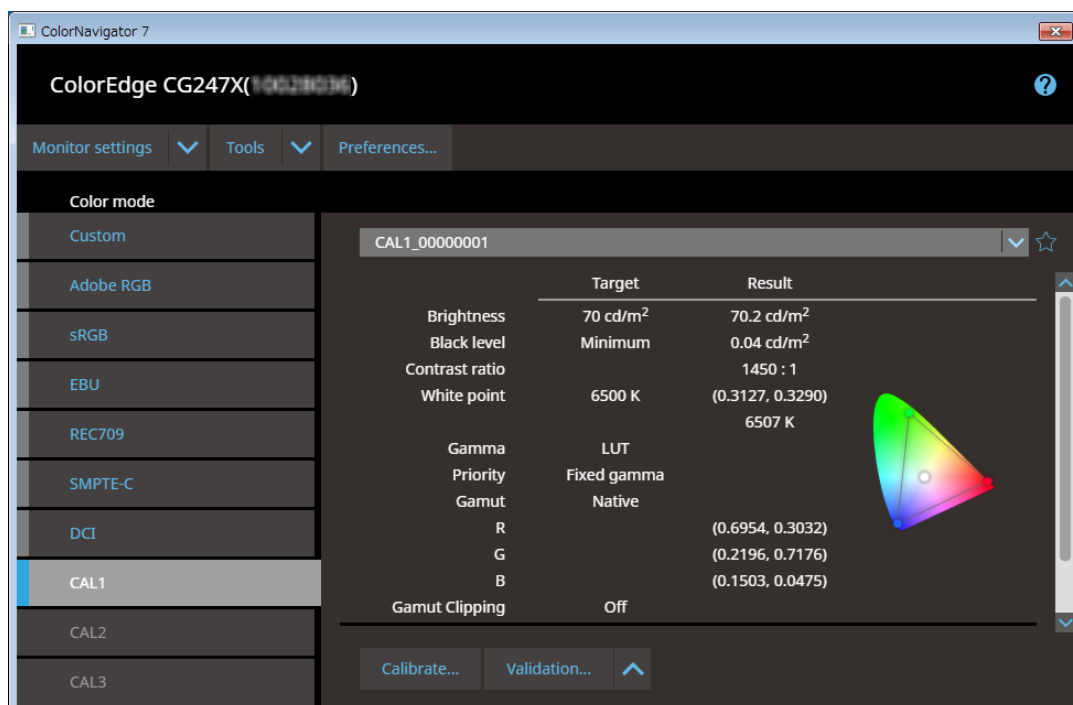


Small icons

- Enter “ColorNavigator 7” into the search box on the “Start” screen, and click the “ColorNavigator 7” icon displayed in the search results

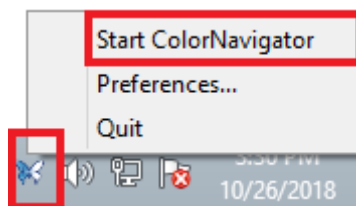


The ColorNavigator icon appears on the task tray, and the main window opens.



If the main window does not open

- 1. Right-click the ColorNavigator icon on the task tray to open the menu**
- 2. Select "Start ColorNavigator"**



Windows 7

The main window can be opened with any of the following methods.

- Click “Start” button - “All programs” - “EIZO” - “ColorNavigator 7” - “ColorNavigator 7”
- Double-click the “ColorNavigator 7” icon on the desktop



Large icons

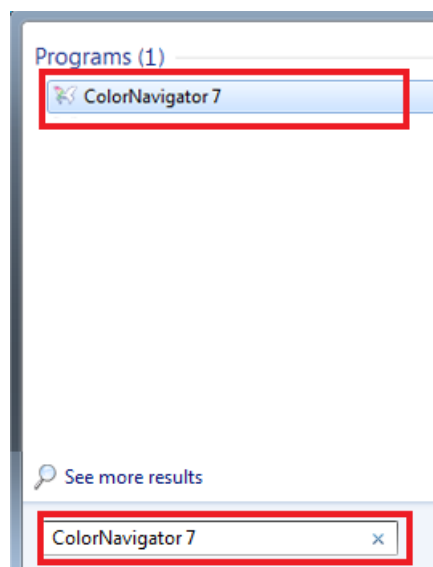


Medium icons

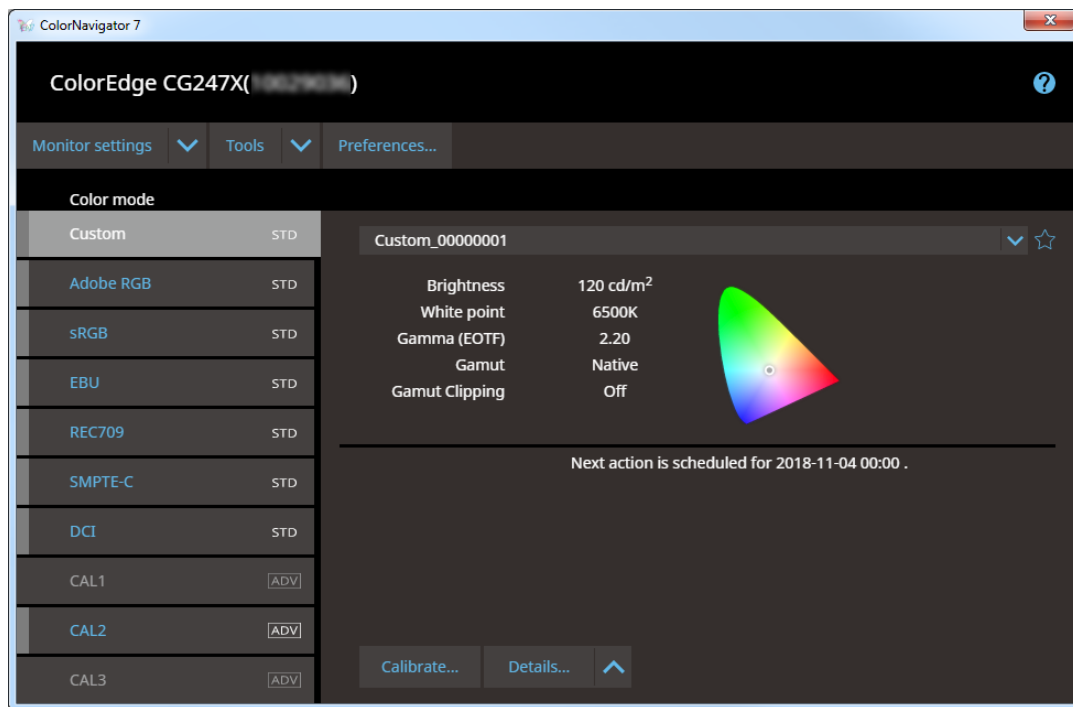


Small icons

- Enter “ColorNavigator 7” into Windows file search, and click the “ColorNavigator 7” icon displayed in the search results

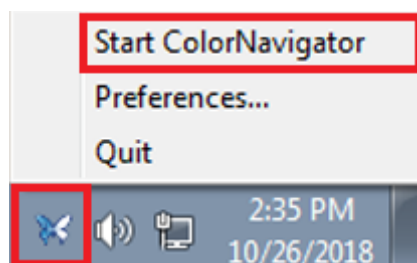


The ColorNavigator icon appears on the task tray, and the main window opens.



If the main window does not open

1. Right-click the ColorNavigator icon on the task tray to open the menu
2. Select "Start ColorNavigator"



Linux

Open the main window with the following method.

- Select "Accessories" from the "Application" menu, and then "ColorNavigator 7"

Guide for Basic Use

A “ColorNavigator 7 Usage Guide” explaining the basic usage of ColorNavigator 7 is available.

For those using ColorNavigator 7 for the first time

Please read the “ColorNavigator 7 Usage Guide (First Edition)”.

For those upgrading from ColorNavigator 6

Please read the “ColorNavigator 7 Usage Guide (ColorNavigator 6 Upgrade Edition)”.

For those upgrading from ColorNavigator NX

Please read the “ColorNavigator 7 Usage Guide (ColorNavigator NX Upgrade Edition)”.

Uninstall

Mac

1. Open the computer’s library folder

Note

- The library folder can be opened with the following procedure.
 1. Click the “Finder” icon above the Dock while pushing “control”, or right-click and select “Move to Folder” from the menu.
 2. Enter “/Library”, and click “Move”.

2. Select the “EIZO” folder from the “Application Support” folder

The EIZO folder opens.

3. Select the “tools” folder from the “ColorNavigator 7” folder

The tools folder opens.

4. Double-click the “ColorNavigator 7 Uninstaller.app” file

Note

- If the “ColorNavigator 7 Uninstaller Full.app” of the “tools” folder is double-clicked, all data including adjustment data can be deleted.
- It is possible to move directly to the folder where the uninstaller was saved by entering the following into “Move to Folder”.
/Library/Application Support/EIZO/ColorNavigator 7/tools

Windows

Attention

- A user account with the “Administrator” authority is required.
 - Please consult your system administrator for the authority setting of your account.
-

- 1. Select “Control Panel” and “Uninstall program” or select “Programs and Features”**
- 2. Click “Uninstall” of “ColorNavigator 7” under the list**

Linux

- 1. Execute the uninstall script**

