

User's Manual

取扱説明書

ColorNavigator™ License Pack

Important

Please read this User's Manual carefully to familiarize yourself with safe and effective usage. Please retain this manual for future reference.

重要

ご使用前には必ずこの取扱説明書をよくお読みになり、正しくお使いください。この取扱説明書は大切に保管してください。



About This Manual

This manual describes how to register the ColorNavigator license key to the monitor.

Precautions

- Your opening of the package containing the license pack shall be conclusively deemed to constitute your acceptance of the terms of this agreement. No return of the opened package will be accepted.
 - One license of the ColorNavigator license key is required per monitor.
 - Once a ColorNavigator license is registered, it cannot be canceled.

No part of this manual may be reproduced, stored in a retrieval system, or transmitted, in any form or by any means, electronic, mechanical, or otherwise, without the prior written permission of EIZO NANA O CORPORATION.

EIZO NANA O CORPORATION is under no obligation to hold any submitted material or information confidential unless prior arrangements are made pursuant to EIZO NANA O CORPORATION's receipt of said information. Although every effort has been made to ensure that this manual provides up-to-date information, please note that specifications are subject to change without notice.

EIZO, the EIZO Logo, and ColorEdge are registered trademarks of EIZO NANA O CORPORATION in Japan and other countries.

ColorNavigator is a trademark of EIZO NANA O CORPORATION.

Registering License Key

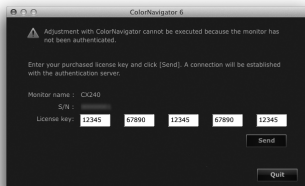
1. Access the following URL using the Web browser.

<http://www.eizo.com/license/>

Note

- The URL is on the provided CD-ROM.
-

2. Download ColorNavigator for the OS in use.
3. Install the downloaded ColorNavigator software on the PC.
For details, refer to the ColorNavigator User's Manual.
4. Start up ColorNavigator.
5. Enter the license key on the package (25-digit alphanumeric code shown below “License Key”), and then click “Send”.



The license key is registered to the monitor, and ColorNavigator can be used.



EIZO NANA O CORPORATION

株式会社ナナオ

<http://www.eizo.com>
<http://www.eizo.co.jp>

1st Edition-August, 2012 Printed in Japan.

00N0L760A1

(U.M-CNLICENSE)

Copyright © 2012 EIZO NANA O CORPORATION All rights reserved.