



# White Paper

## Outline and Merits of EIZO EcoView NET Software

### CONTENTS

|   |   |
|---|---|
| Preface .....   | 2 |
| What is EcoView NET software? .....                     | 2 |
| Features and benefits of EcoView NET software .....     | 3 |
| Summary .....   | 6 |
| General specifications of EcoView NET (Ver.1.1.0) ..... | 7 |

No.09-006 Revision A

July 2010

EIZO NANA O CORPORATION

## Preface

In recent years, display monitors are used for many purposes and in many setups such as dual-monitor configurations. Thus, in this situation, asset management and reducing operating cost of the monitors, like power consumption, become critical issue.

Recently, EIZO has provided network monitor management software named 'EcoView NET' for free. This document describes outline and merit of EcoView NET software under the environment which are used many monitors.

## What is EcoView NET?

EIZO EcoView NET is software which controls power management settings and asset management information of monitors via a network. This software helps to decrease monitors' power consumption by turning them on/off, adjusting their brightness levels, or activating their auto brightness function (Auto EcoView).

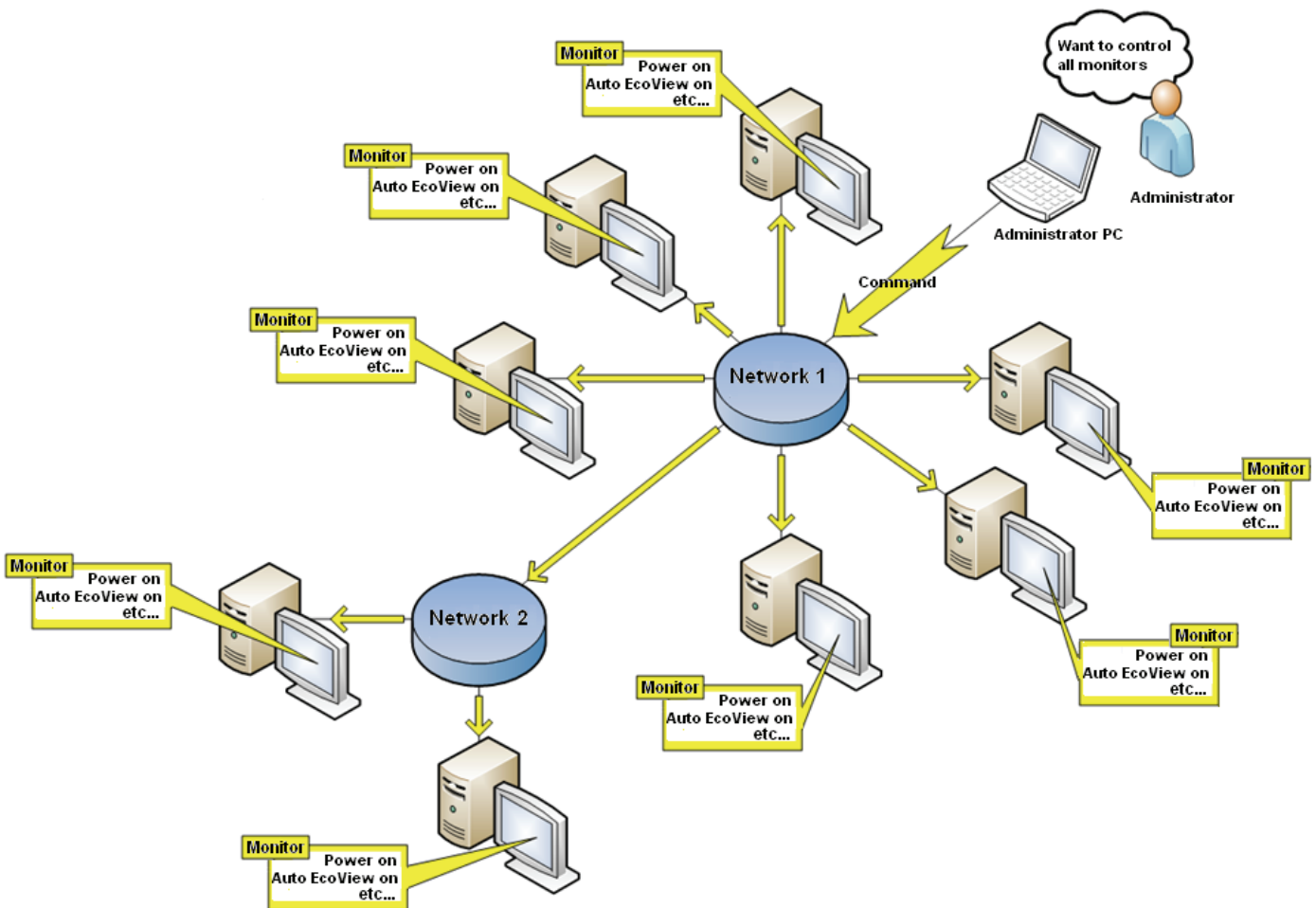


Fig.1: Monitor management using EcoView NET software

## Features and benefits of EcoView NET software

The following are functions and merits of EcoView NET software.

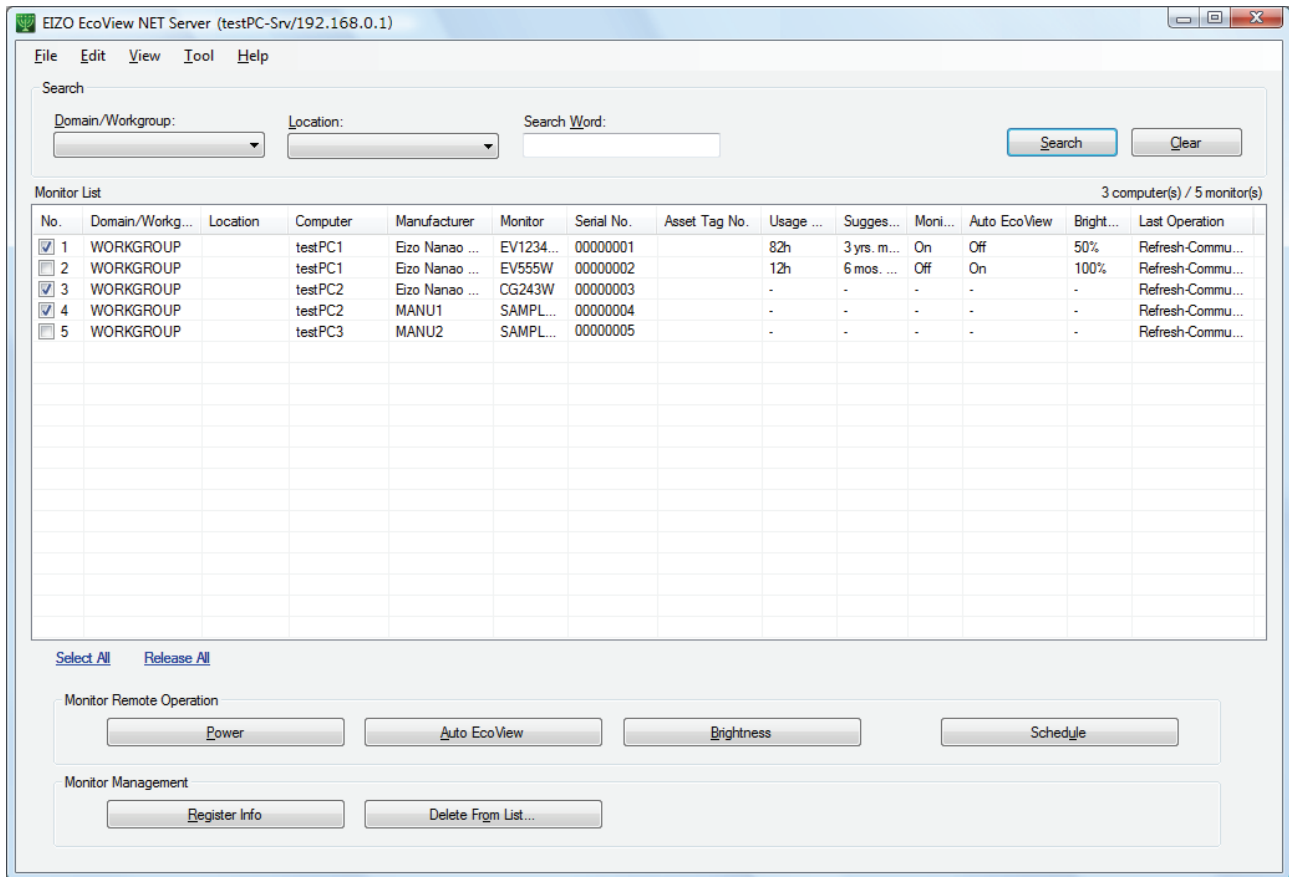


Fig.2: Server menu of EcoView NET

### Power control

Beginning with Ver.1.1.0, EcoView NET can control power of the monitor even if the monitors are not supported EIZO monitors (i.e monitors from other manufacturers). EcoView NET (Ver.1.1.0 or later) can control the power of many different monitors by using the power saving function of the monitors\*. Thus in a general office setting where many kinds of monitors are used, EcoView NET can be used to reduce their power consumption.

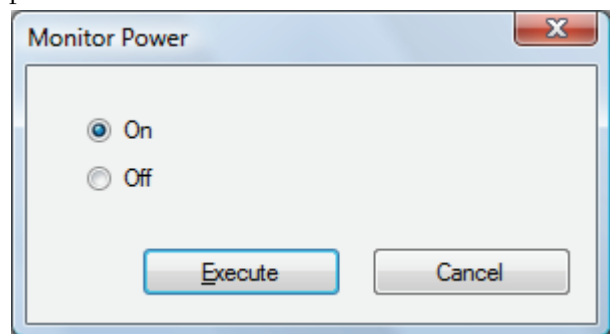


Fig.3: Monitor power control

- \* Monitors must have a built-in power saving function.
- \* This function does not shut off the monitors so they will consume some power in their power saving state.

## Auto EcoView control

EcoView NET can turn a monitor's Auto EcoView function on/off via a network. It also possible to control the Auto EcoView function of many monitors at the same time.

By using the Auto EcoView function, users can view their monitors at the proper brightness, which contributes to decreased eye fatigue. By reducing excessive brightness, Auto EcoView also reduces a monitor's power consumption\*.

\*This function is only available with EIZO FlexScan monitors that have Auto EcoView and are DDC-CI extended command compatible.

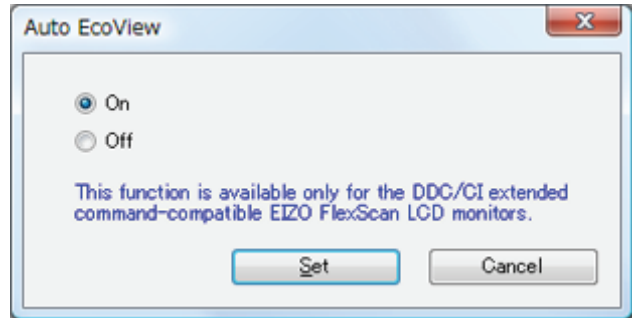


Fig.4: Auto EcoView control

## Brightness control

From this menu, users can adjust the monitor's brightness. It also possible to control the brightness of many monitors at the same time. Reducing excessive brightness makes for viewing the screen easy on the eyes and is effective at lowering power consumption of the monitors\*.

\*This function is only available for DDC-CI extended command compatible EIZO FlexScan monitors.

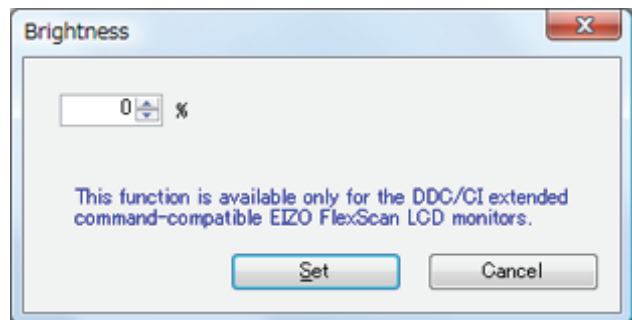


Fig.5: Brightness control

## Monitor power scheduling

Monitors are used in various situations and various times in an office setting. Workers take time for breaks and lunch and leave at the end of the day during which time the monitors are not used. It can be difficult to always remember to switch off the monitor.

In these cases, EcoView NET's scheduling function can help reduce unnecessary power consumption of the monitors\*.

\*This function is only available for DDC-CI extended command compatible EIZO FlexScan monitors.

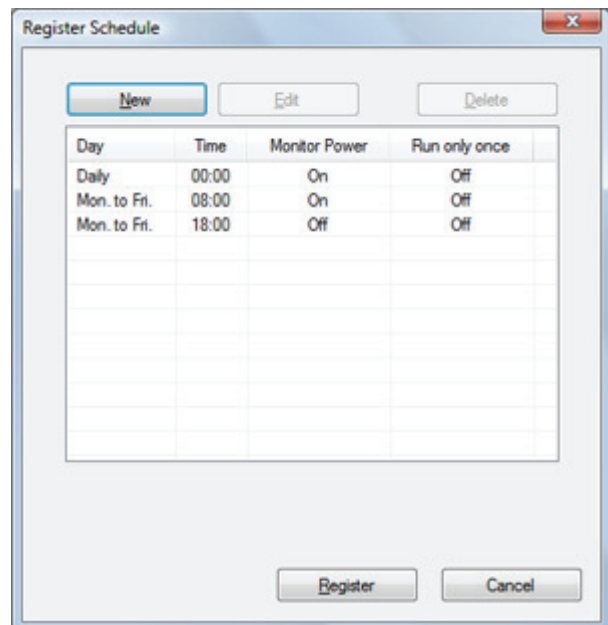


Fig.6: Scheduling function

## Asset information of the monitor

Each monitor is an important asset for a company. The number of monitors to be managed is increasing in our PC-based working environment. Also in some cases, workers use two monitors which makes asset management more complicated.

| Computer | Manufacturer   | Monitor   | Serial No. |
|----------|----------------|-----------|------------|
| testPC1  | Eizo Nanao ... | EV1234... | 00000001   |
| testPC1  | Eizo Nanao ... | EV555W    | 00000002   |
| testPC2  | Eizo Nanao ... | CG243W    | 00000003   |
| testPC2  | MANU1          | SAMPL...  | 00000004   |
| testPC3  | MANU2          | SAMPL...  | 00000005   |

Fig.7: Asset information of the monitor

EcoView NET can manage both EIZO and non-EIZO monitors by their name, manufacturer and serial number. It also has a search function that can be used to search for any monitors based on this information or based on the name of the PC\*.

\* EDID information including monitor name, manufacturer and serial-number are required on the monitor.

## Suggested time until replacement

Over time, a monitor's brightness gradually deteriorates or the monitor stops working. The larger the installation is the greater the number of monitors that will need to be repaired or replaced. Therefore, it is important to forecast when monitors will need to be replaced.

Monitors suggested time until replacement generally can be calculated by their usage time. This function forecasts the amount of time that remains until the monitor should be replaced\*.

\*This function is only available for DDC-CI extended command compatible EIZO FlexScan monitors.

\*Suggested time until replacement is for reference purposes only. The actual time varies by model and the usage environment. The quality of the monitor is not guaranteed for the suggested time.

\*This calculation supposes that the monitor is used for 12 hours per day and displays time left until the monitor's usage time reaches 30,000 hours.

The screenshot shows the EIZO EcoView NET Server interface. At the top, there is a search section with dropdown menus for 'Domain/Workgroup' and 'Location', and a text input for 'Search Word'. Below this is a 'Monitor List' table. The table has columns for No., Domain/Workgroup, Location, Computer, Manufacturer, Monitor, Serial No., Asset Tag No., Usage, Suggested Replacement Time, Monitor Status, Auto EcoView, Brightness, and Last Operation. Three rows are visible, corresponding to the data in Fig. 7. The 'Suggested Replacement Time' column for the first two rows is highlighted with a red box, showing '3 yrs. m...' and '6 mos. ...' respectively.

| No. | Domain/Workgroup | Location | Computer | Manufacturer   | Monitor   | Serial No. | Asset Tag No. | Usage | Suggested Replacement Time | Moni... | Auto EcoView | Bright... | Last Operation   |
|-----|------------------|----------|----------|----------------|-----------|------------|---------------|-------|----------------------------|---------|--------------|-----------|------------------|
| 1   | WORKGROUP        |          | testPC1  | Eizo Nanao ... | EV1234... | 00000001   |               | 82h   | 3 yrs. m...                | On      | Off          | 50%       | Refresh-Commu... |
| 2   | WORKGROUP        |          | testPC1  | Eizo Nanao ... | EV555W    | 00000002   |               | 12h   | 6 mos. ...                 | Off     | On           | 100%      | Refresh-Commu... |
| 3   | WORKGROUP        |          | testPC2  | Eizo Nanao ... | CG243W    | 00000003   |               | -     | -                          | -       | -            | -         | Refresh-Commu... |

Fig.8: Suggested time until replacement

## Summary

This white paper can be summarized as follows.

- (1) With monitors being used for an ever-increasing number of tasks, it is necessary to consider the asset management and power consumption of the monitor itself.
- (2) EcoView NET can simplify asset management, reduce power consumption, and set the brightness of the monitor.
- (3) Some of the features of EcoView NET are compatible with monitors of other manufacturers, therefore this software can be helpful in managing and reducing power in actual office conditions

## General specifications of EcoView NET (Ver.1.1.0)

EcoView NET Server supported OS

- Windows XP SP3 (32 bit)
- Windows Vista (32 bit)
- Windows Server 2003 (32 bit)
- Windows Server 2008 (32 bit)
- Windows 7 (32 bit, 64 bit)

EcoView NET Client supported OS

- Windows XP (32 bit)
- Windows Vista (32 bit)
- Windows 7 (32 bit, 64 bit)

EcoView NET functions

| Item   | DDC/CI extended command supported monitor | Other monitors (includes other manufacturers' monitors) |
|--|---|---|
| Power on/off   | Yes                                       | Yes   |
| Auto EcoView setting   | Yes                                       | No  |
| Brightness adjusting   | Yes                                       | No  |
| Power on/off scheduling                                      | Yes                                       | No  |
| Asset management (monitor name, manufacturer, serial number) | Yes                                       | Yes   |
| Suggested time until replacement                             | Yes                                       | No  |

EIZO monitors that support DDC-CI extended command (as of July 2010)

- FlexScan EV series EV2411W, EV2023W, EV2303W, EV2333W, EV2313W
- FlexScan S series S2402W, S2433W, S2432W, S2202W, S2233W, S2232W, S2243W, S2242W, S1921-X, S1721-X, S1701-X
- FlexScan SX series SX2462W, SX2262W

All product names are trademarks or registered trademarks of their respective companies. Copyright©2010 EIZO NANA O CORPORATION. All rights reserved.