
DUS-DD v1.1.2.8

User's Guide

DMC Co., Ltd.

--List of Contents--

1. Structure and Outline	2
2. System Requirements	3
3. Install and Startup	4
4. Uninstall	7
5. Setup Procedures of Touch Screen Driver	9
6. Device Addition	10
6-1. Install	11
6-2. Uninstall	17
7. Basic Setting	19
8. Touch Setting	20
8-1. Touch Screen Configuration	23
8-2. Touch Screen Calibration	24
9. Mouse Setting	25
9-1. Mouse Configuration Screen	26
9-2. Mouse Configuration	27
9-3. Mouse Calibration	28
10. Status	29
11. Information	30

The software described in this document is provided based on the Software License Agreement, and can be used only when you agree with the contents of the agreement.

Copyright

Copyright © 2013 DMC Co., Ltd.

About the trademarks

Microsoft and Windows are the registered trademarks of Microsoft Corporation in the United States.

1. Structure and Outline

■ Structure

DUS-DD consists of

- Setting Tool (Touch Screen Properties)
- Configuration Files
- Driver

■ Outline

System Outline

DUS-DD provides the functions necessary to operate a touch screen.

The functions are

- Install and Uninstall of the touch screen driver
- Configuration of the touch screen driver
- Monitoring of the touch screen driver

All the settings can be configured with this tool.

2. System Requirements

Japanese version of Windows7 32bit Home or greater editions

.Net Framework3.5

Approximately 10MB of free space and data file capacity is needed in system drive.

The install destination will be inside of

System drive¥Program Files¥DUS-DD¥

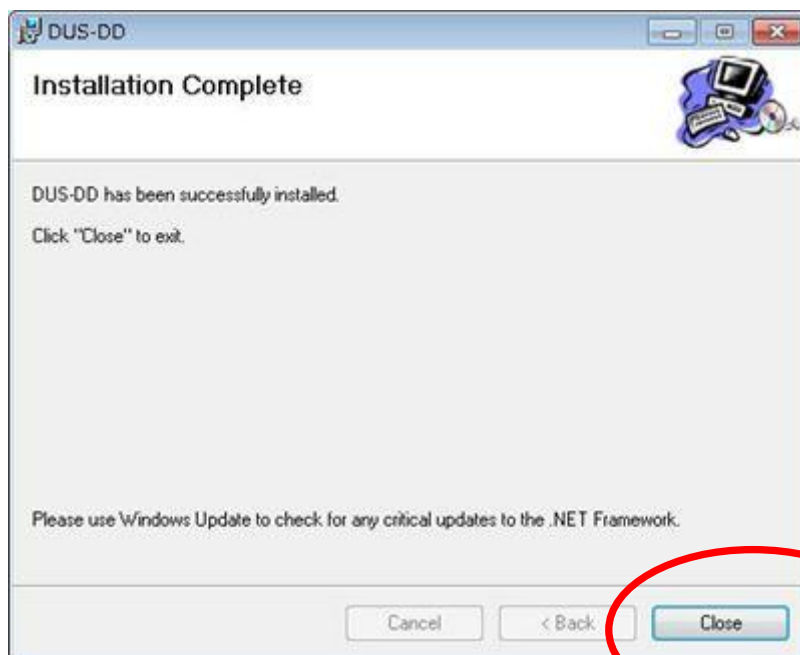
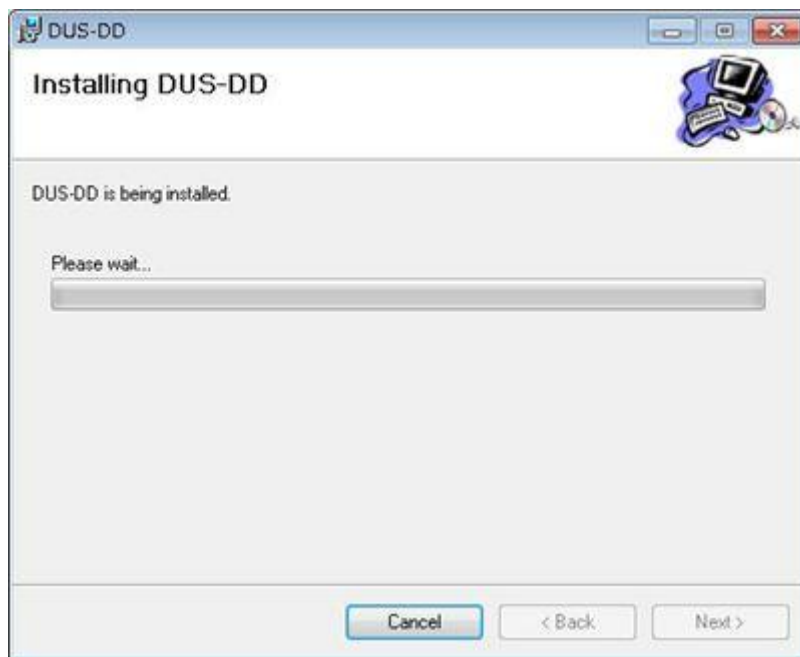
Under a multiple-monitors environment, the graphic driver needs to be WDDM1.0 or greater and support DirectX9.

3. Install and Startup

Double-click [**DUS-DD.msi**].

Setup wizard will start. Click [Next] for install.





Once install is completed, click [Close].

If install was successful, shortcut for [DUS-DD] would be created on the desktop.



Either double-click the shortcut, or select [System Drive ¥ Program Files ¥ DUS-DD ¥ DUS-DD.exe] from the program file. The setting tool (Touch Screen Properties) will start up.

- **Windows7**

Under Windows7 environment, administrative privilege will be required because [DUS-DD.exe] will install a driver. In some settings of UAC (User Account Control), the dialog like below will appear. If such dialog appeared, click [Yes].



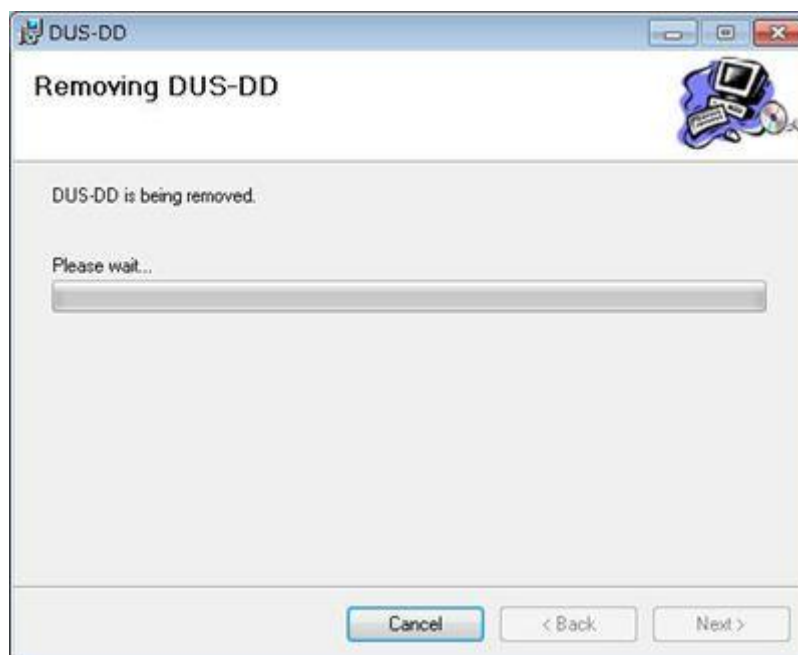
Install is completed at this point.

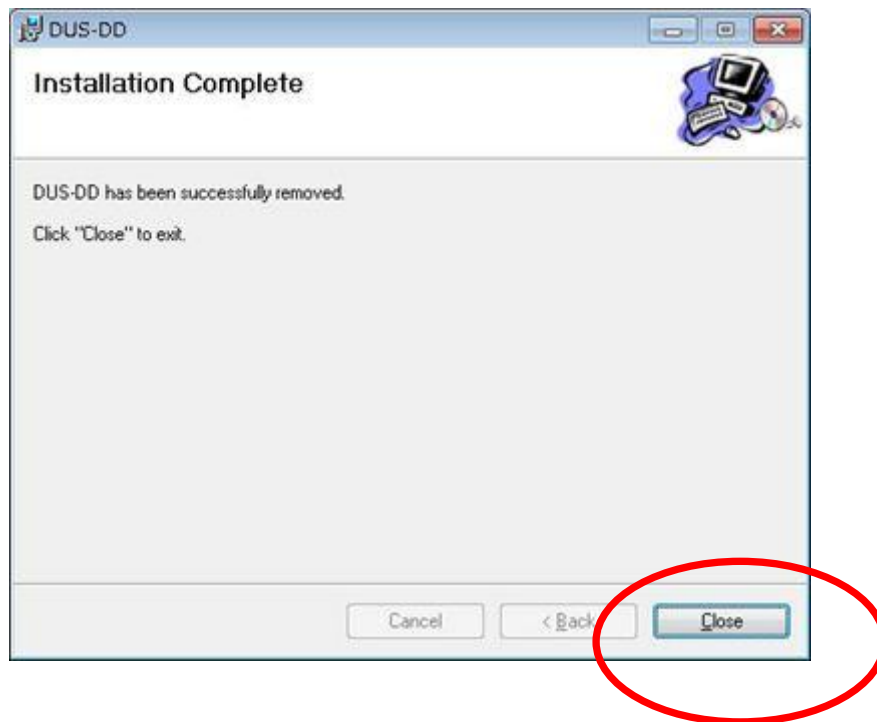
4. Uninstall

Double-click **[DUS-DD.msi]**.

Menu for repairing/removing DUS-DD.msi. will appear.

Select [Remove DUS-DD], and click the [Finish] button.





Once uninstall is completed, click [Close].

Uninstall is completed at this point.

5. Setup Procedures of Touch Screen Driver

■ Procedures to operate the touch screen driver

To use the touch screen driver, the below procedures are required in each screen.

1. Device Addition

Install of the touch screen driver

2. Configuration File Selection

. After selecting the installed driver from Basic Setting, select a configuration file.

***The default input mode after driver install is touch input.**

3. Touch Screen Composition

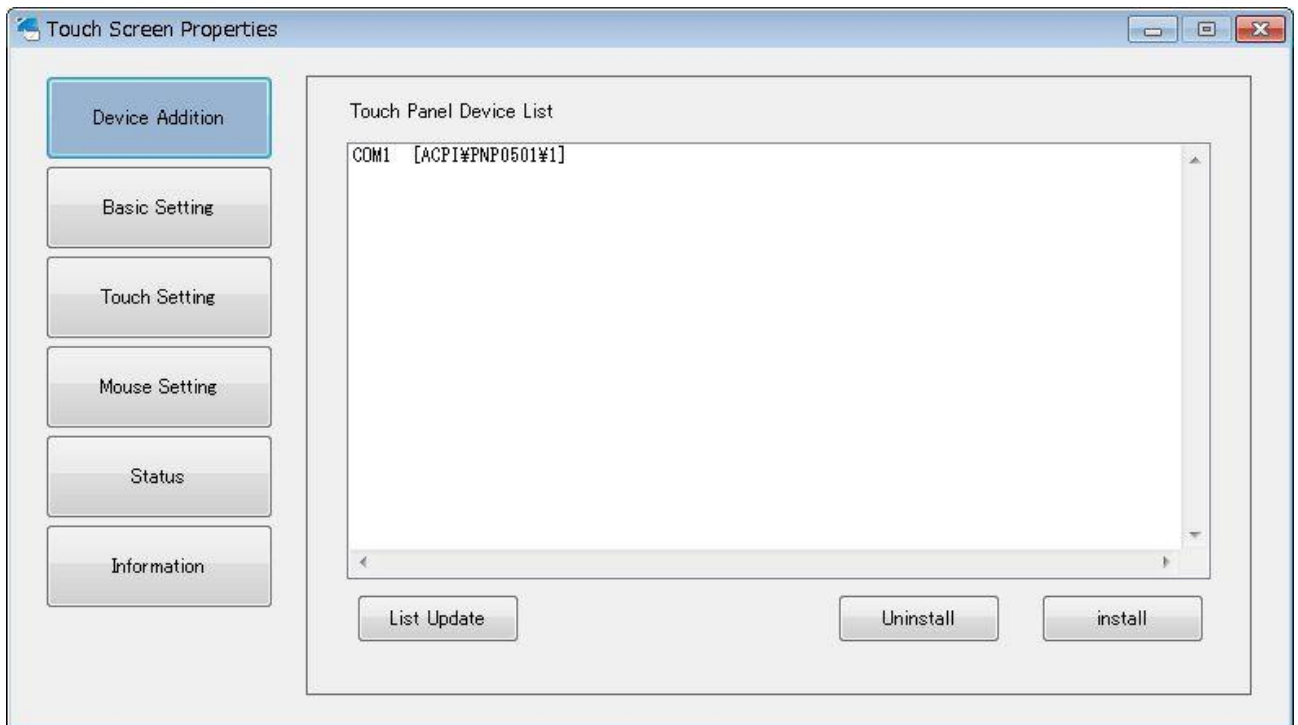
Touch input: Setup of TabletPC setting in Touch Setting

Mouse input: Setup of Mouse Configuration in Mouse Setting

6. Device Addition

■ Touch Screen Device List

The connected USB touch screen controller and/or connectable COM port will be indicated.



The list will be automatically updated as a touch screen is connected.

*The automatic updating will not be performed during install and uninstall.

The list can be updated manually as well, by clicking the [List Update] button.

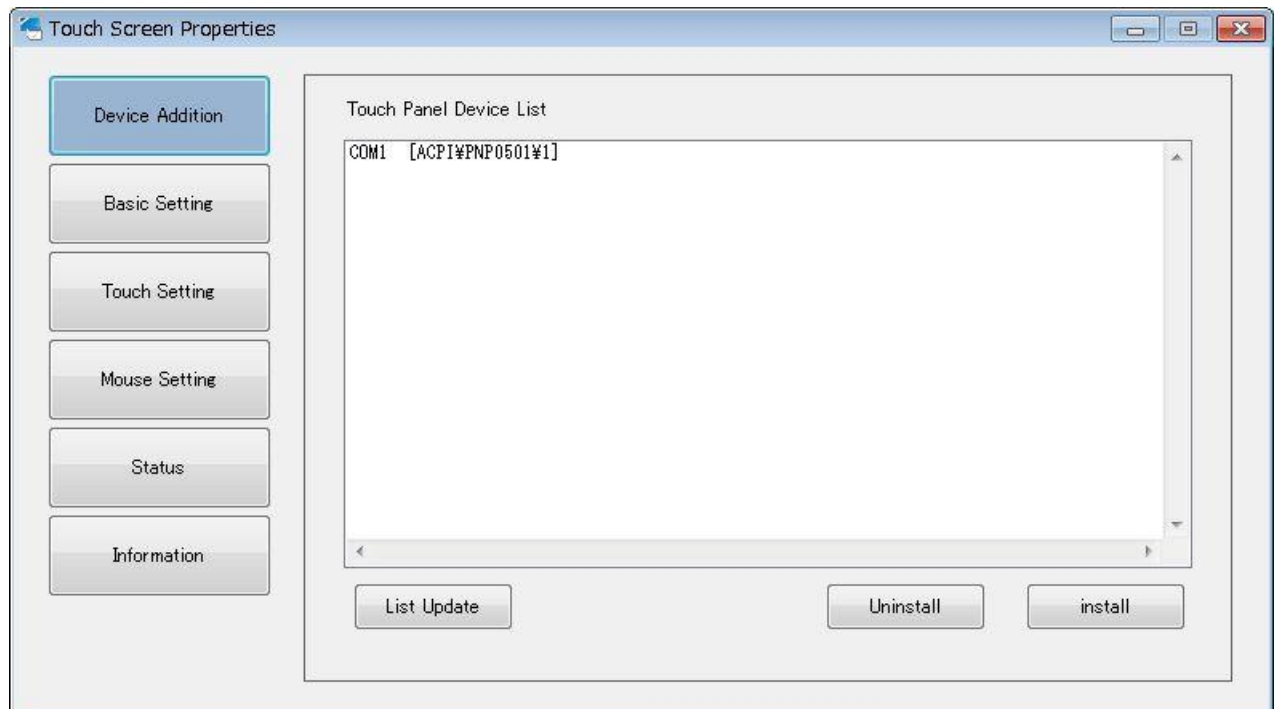
6-1. Install

This section is about installing the touch screen driver.

Follow the below procedures for install.

Connect the touch screen before install.

1. Select the device intended to be installed.



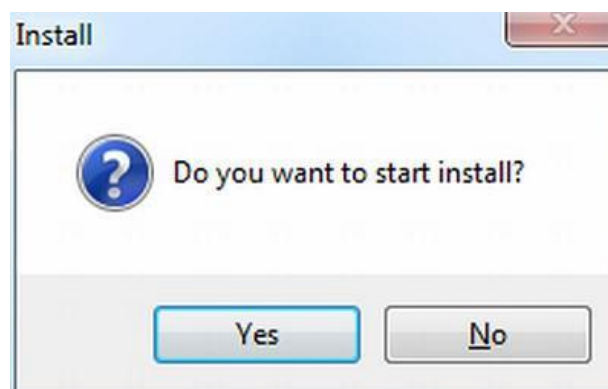
Select the device from the Touch Panel Device List for install, and click [install].

The installable devices are as below.

USB connection/ DUS controller (made by DMC)

Serial (TTL) connection / DUS controller (made by DMC)

2. The confirmation dialog will appear. Select [Yes].



3. The below dialog will appear at the initial install.

Windows7

Select [Install this driver software anyway].



WindowsXP

Select [Continue Anyway].



The above screen may appear several times. Click [Continue Anyway] each time.

In WindowsXP environment, the below screen may appear during install.
The install will be performed automatically. Do not click anything.



4. Install will begin, and the below indication will appear. Please wait for a while.

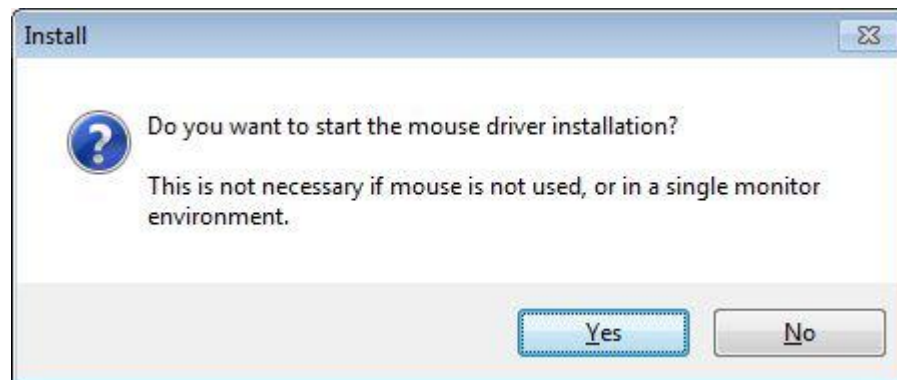


5. Device will be checked once install is completed. Please wait for a while.



6. If you want to use a mouse in multiple-monitors environment, select [Yes] on the below screen and install the mouse driver.

*Install is not necessary if only touch input is used or for single monitor environment.



7. The below dialog will appear at the initial install.

Windows7

Select [Install this driver software anyway].

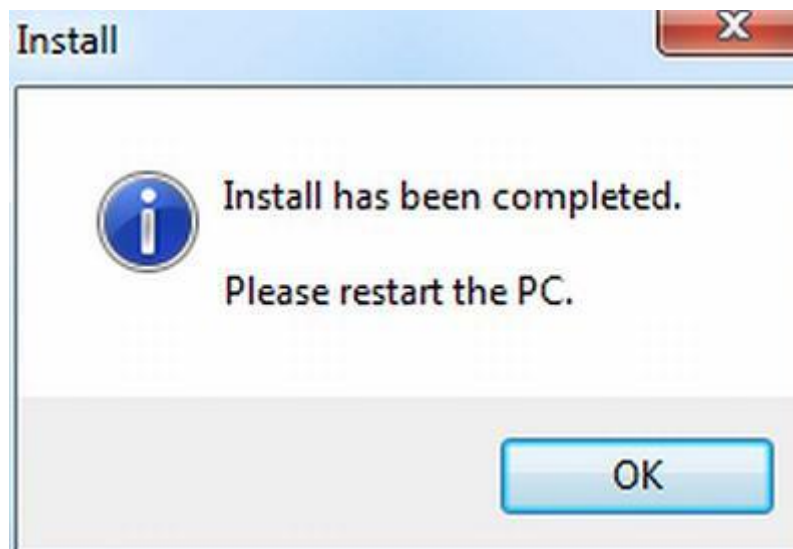


WindowsXP

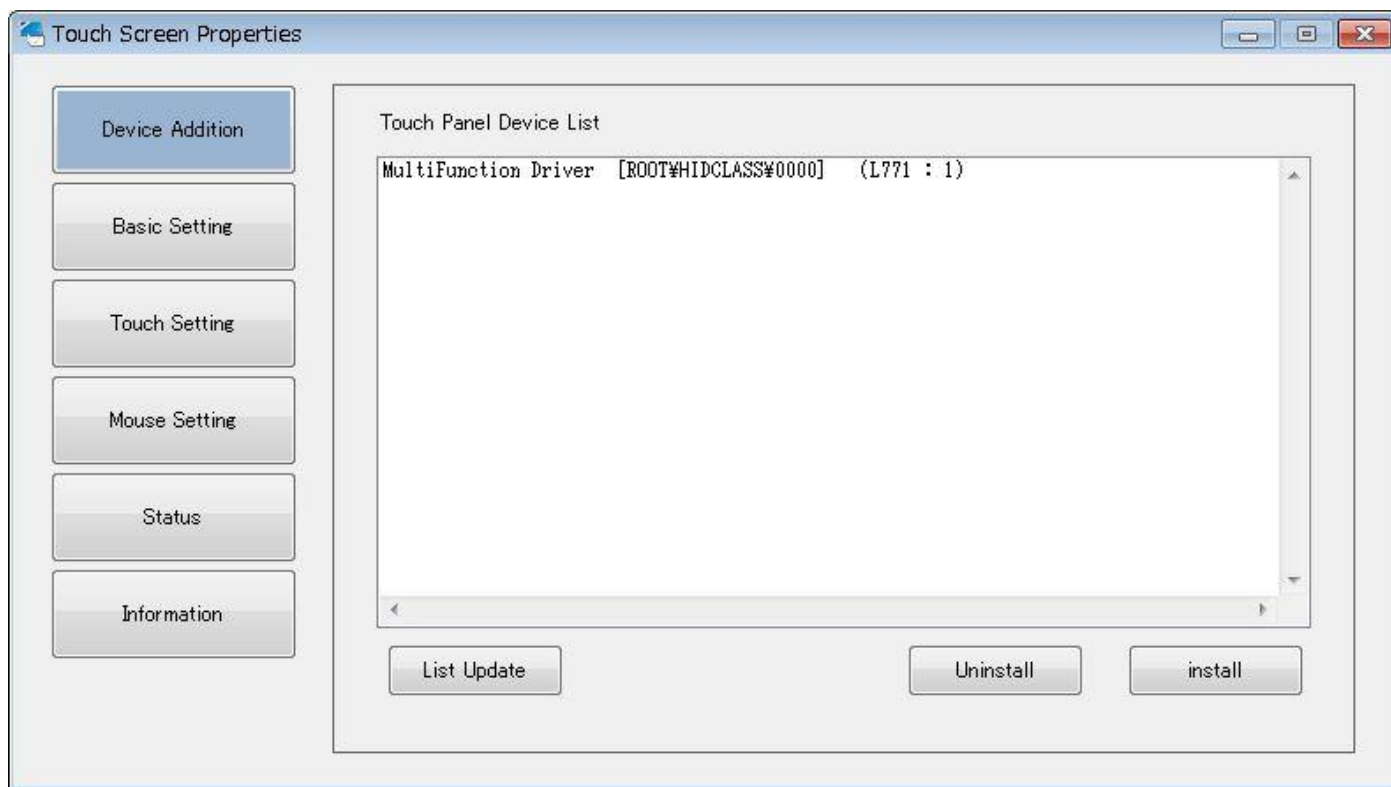
Select [Continue Anyway].



8. Once install is completed, the below dialog will appear. Click [OK].



9. Install completion



Once install is completed, [MultiFunction Driver] will appear in the [Touch Panel Device List].

Restart the PC after the install completion.

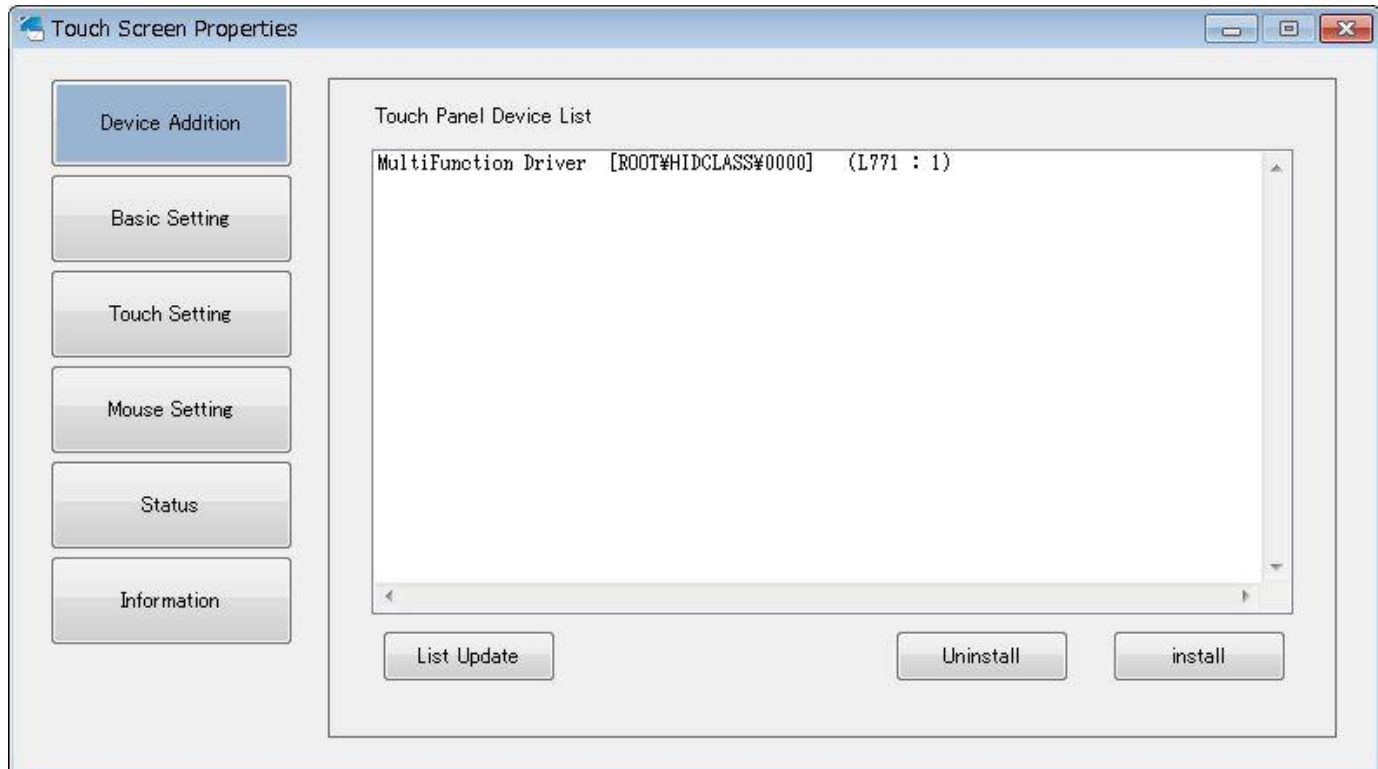
The install is completed at this point.

6-2. Uninstall

This section is about uninstalling the touch screen driver.

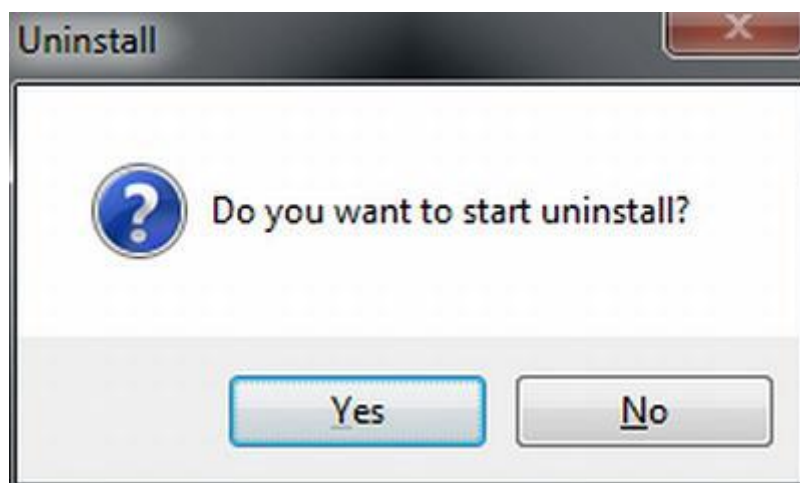
Follow the below steps for uninstall.

1. Select the device intended to be uninstalled.



Select [MultiFunction Driver] in [Touch Panel Device List], and click [Uninstall].

2. The confirmation dialog will appear. Select [Yes].



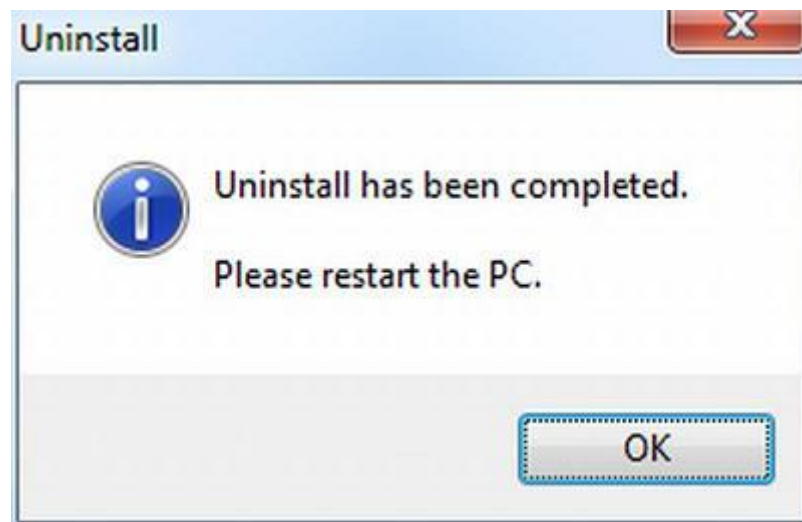
3. The device is being uninstalled. Wait for a while.



4. Uninstall has been completed. The device is being checked. Wait for a while.

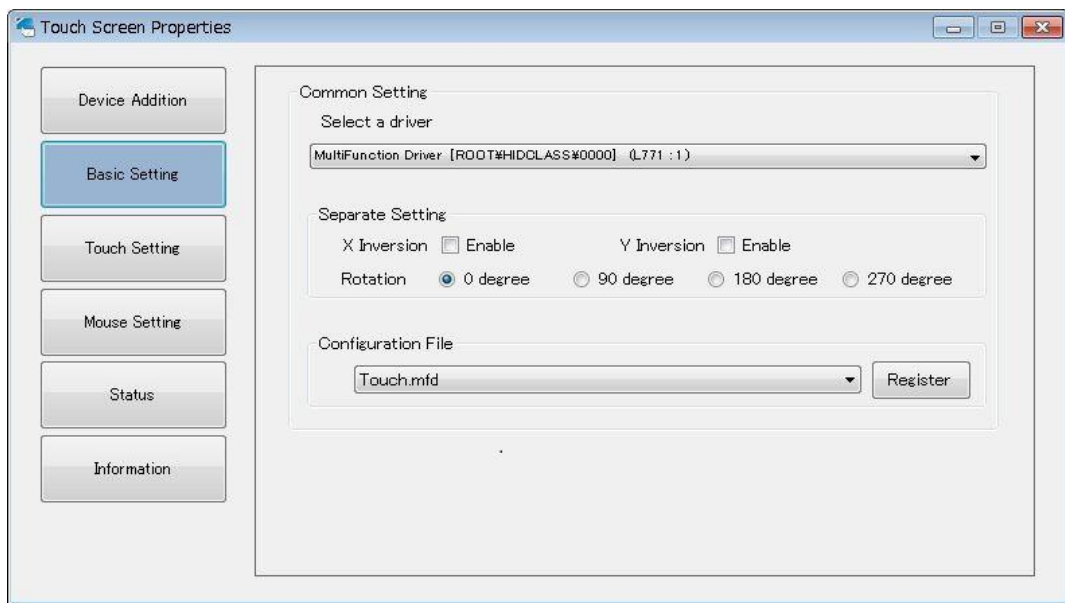


5. Uninstall has been completed. Click [OK] and restart the PC.



Uninstall is completed at this point.

7. Basic Setting



■ Common Setting

The below settings can be configured for each touch screen.

Select a driver from the combo box for setting.

■ Separate Setting

• X Inversion

If enabled, X-axis coordinates will be inversely outputted on touches.

The function is not enabled in default configuration.

• Y Inversion

If enabled, Y-axis coordinates will be inversely outputted on touches.

The function is not enabled in default configuration.

• Rotation

XY coordinates will be outputted in rotation of 0, 90, 180, and 270 degree.

It is 0 degree at the default setting.

■ Configuration File

Configuration file can be changed. Select a configuration file and click [Register].

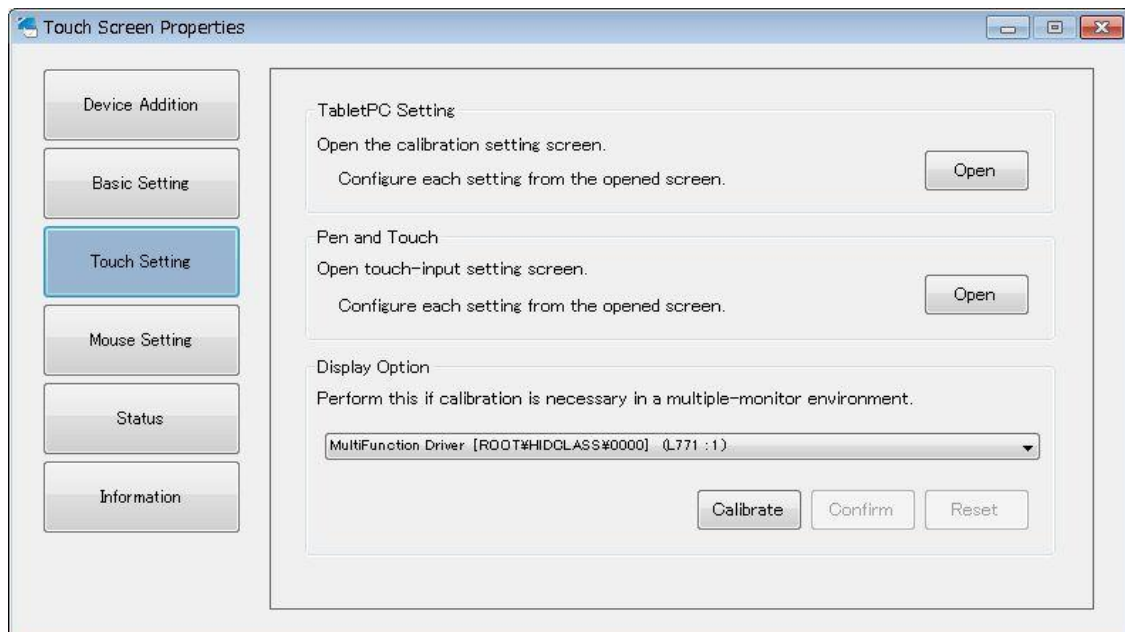
[Touch.mdf] :For using touch output

[Mouse.mdf] :For using mouse output

The default setting file is [Touch.mdf]

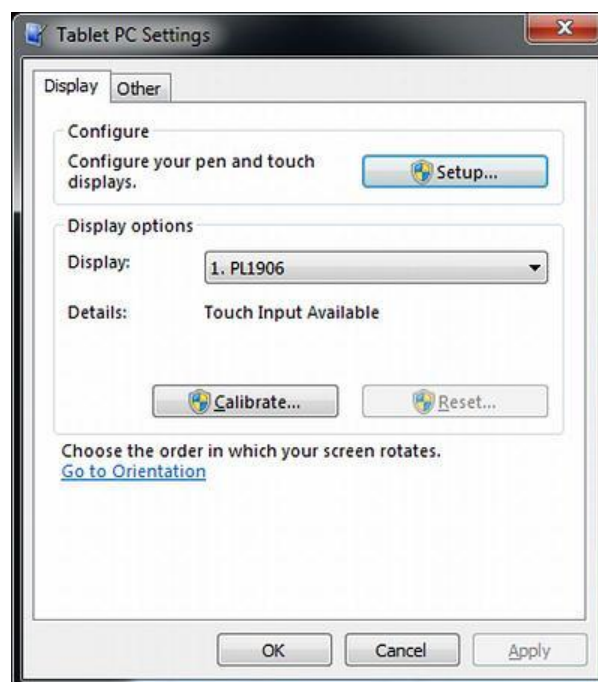
8. Touch Setting

The below screen is available only under Windows7 environment.



■ TabletPC Setting

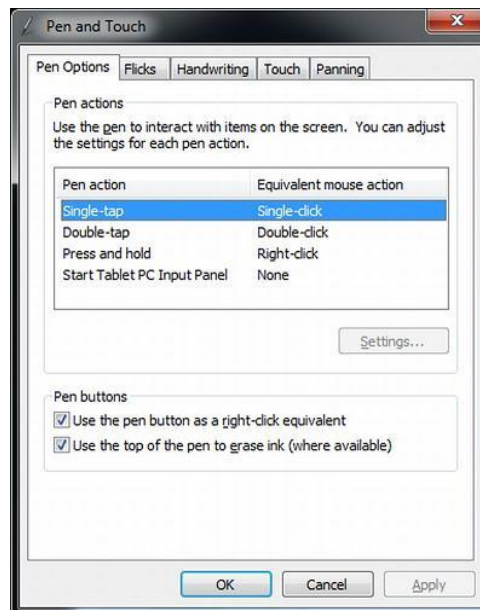
Click [Open], then the Windows standard setting screen will appear.



Display configuration and calibration can be performed.

■ Pen and Touch

Click [Open], then the Windows standard setting screen will appear.



Touch input adjustment and flick/gesturing touch operation setting can be performed.

■ Display Option

• Calibrate

Software calibration can be performed for each driver.

Select a driver and click [Calibrate].

For multiple-monitors environment, perform this function only if it is necessary.

Refer to the [8-2. Touch Screen Calibration] section for details.

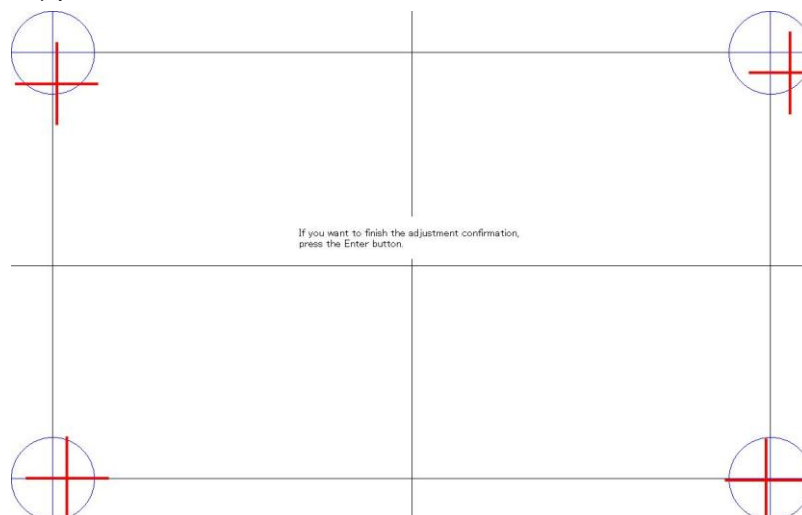
• Reset

Adjustment results can be reset.

• Confirm

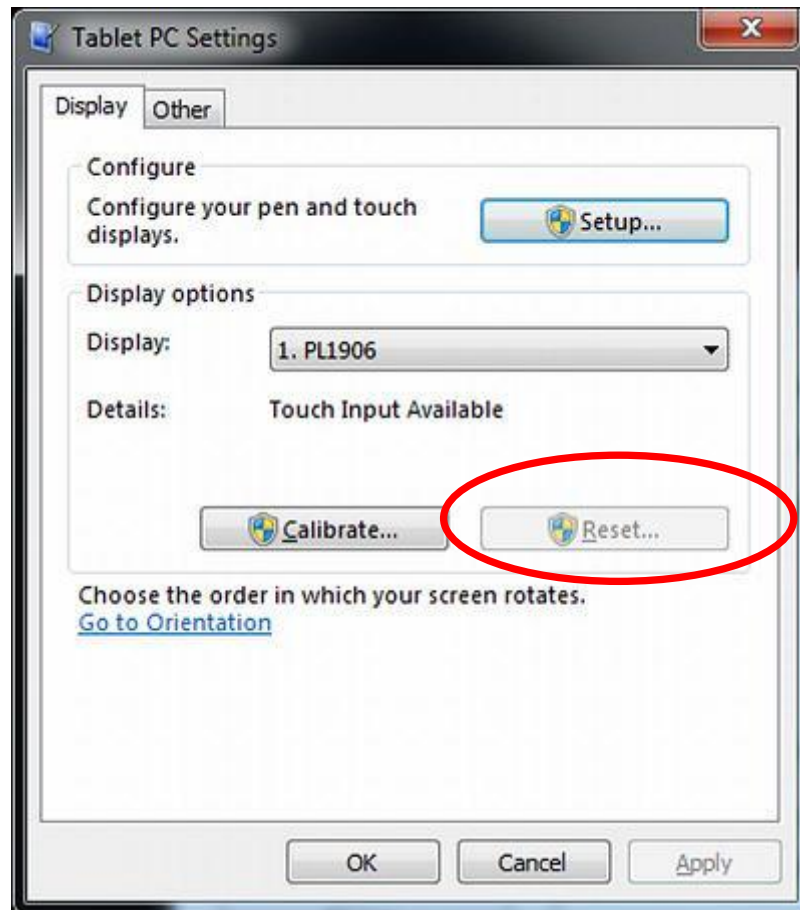
Check and confirm the calibration data.

The below screen will appear. The ideal points at calibration are indicated with blue while the touched (corrected) points are indicated with red.



Press [Enter] to end the confirmation.

Note) If you make calibration with this function, do not use Windows standard calibration function. If settings have been already made with the Windows function, the settings need to be reset beforehand.



8-1. Touch Screen Configuration

If touch screen is to be used on Windows 7, the following configuration will be required.

1. Click [Open] in the [TabletPC Setting] to open the [TabletPC Settings] screen.



2. Select [Setup] in [Configure].



3. Touch the touch screen on which the below message is appearing.



4. Repeat the above procedure 3 as many as number of the displays.

Once the above setting is completed, the cursor will become to appear on the monitors at touch.

8-2. Touch Screen Calibration

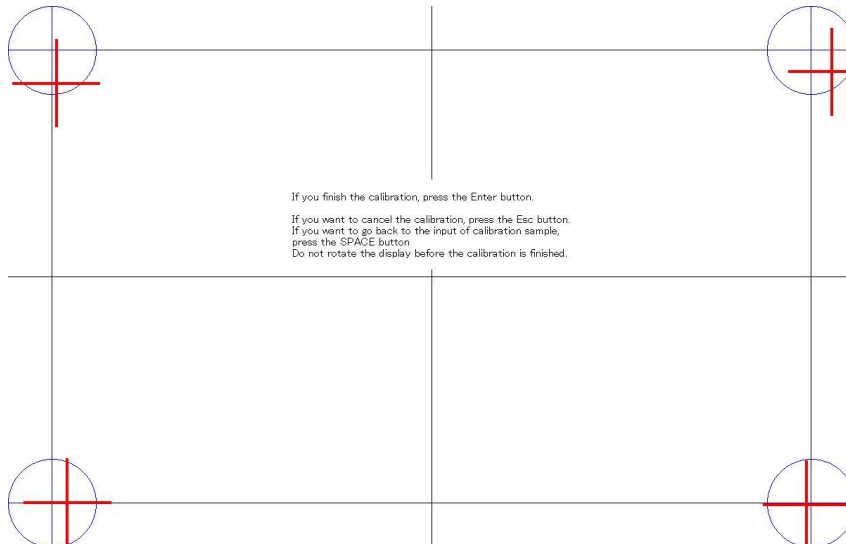
1. After selecting a driver in the touch setting screen, click [Calibrate] in display option.
2. The below calibration screen will appear on the monitor related with the touch screen of the selected driver.



If you want to input a calibration sample, tap the crosses on the screen as they appeared.
If you want to stop the input of calibration sample, press the EXO button.
Do not rotate the display before the calibration is finished.

3. Touch the center of the markers on the screen. The markers will appear in order of left top, right top, left bottom and right bottom.
4. After touching all the markers, the below screen will appear.

The ideal points at calibration will be indicated with blue crosses while the touched (corrected) points will be indicated with red crosses.



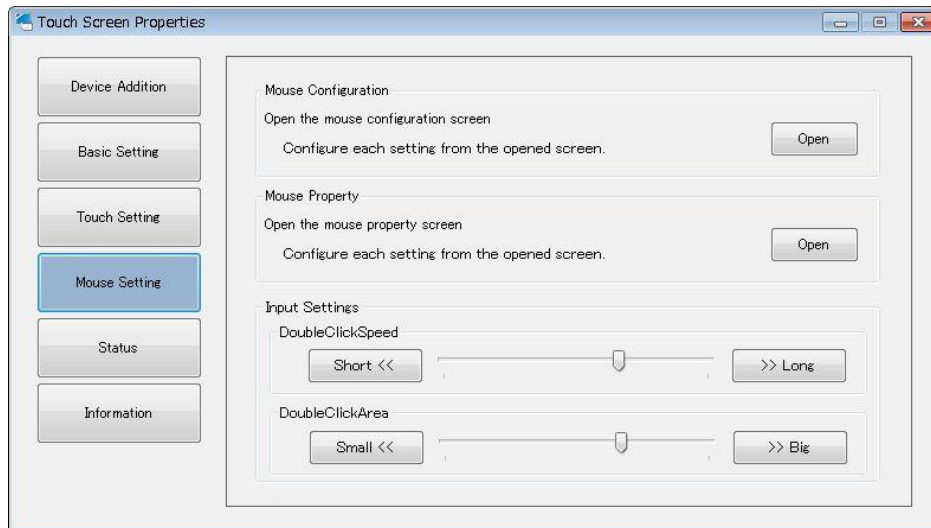
5. Touch the screen to check if the calibration is successful.

If the calibration is successful, press [Enter].

If you want to make calibration again, press [Space].

If you want to cancel calibration, press [ESC].

9. Mouse Setting



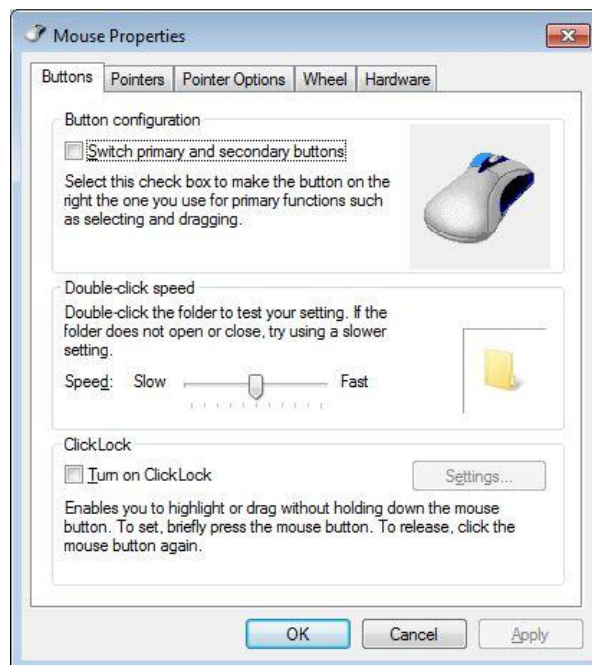
■ Mouse Configuration

Click [Open] to open the mouse configuration screen.

Refer to [9-1. Mouse Configuration Screen] in the next page for details.

■ Mouse Property

Click [Open] to open the Windows standard mouse property screen.



■ Input Settings

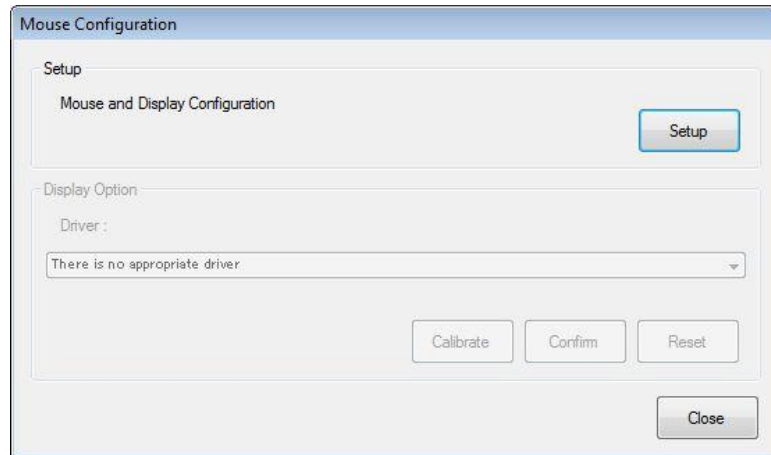
• DoubleClickSpeed

Setting for interval of time between 2 successive clicks to recognize double-click

• DoubleClickArea

Setting for area to recognize double-click (The area within which 2 successive clicks are recognized as double-click)

9-1. Mouse Configuration Screen



■ Setup

You can relate mouse with monitor.

Click [Setup] to make relations.

Refer to the [9-2. Mouse Configuration] section for details.

■ Display Option

• Calibrate

Software calibration can be performed on each driver.

Refer to the [9-3. Mouse Calibration] section for details.

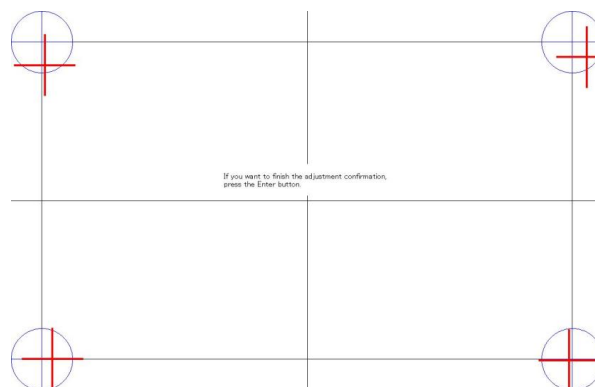
• Reset

Reset calibration result to default.

• Confirm

Check and confirm the calibration data.

The ideal points at calibration will be indicated with blue while the touched (corrected) points will be indicated with red.



Press [Enter] to end the confirmation.

9-2. Mouse Configuration

1. Click [Setup] in the Muse Configuration screen.
2. The below screen will appear on the monitors one by one from the leftmost.

Touch the touch screen on this monitor twice.
If you want to move to the next monitor setting,
press the Enter button.
If you want to cancel, press the ESC button.

The driver configured on this monitor will be indicated below.

3. Tap the touch screen twice.
4. The tapped touch screen will appear on the screen.

Touch the touch screen on this monitor twice.
If you want to move to the next monitor setting,
press the Enter button.
If you want to cancel, press the ESC button.

The driver configured on this monitor will be indicated below.
(1) USB\VID_0AFA&PID_07D2\MI_00982E9638960000

5. Once setting of the current monitor is completed, press [Enter].

If there are multiple monitors, the screen of the above procedure 2 will appear on the next monitor.

6. Once [Enter] is pressed at the last monitor, the setting will be completed.

If you want to cancel halfway, press [ESC].

9-3. Mouse Calibration

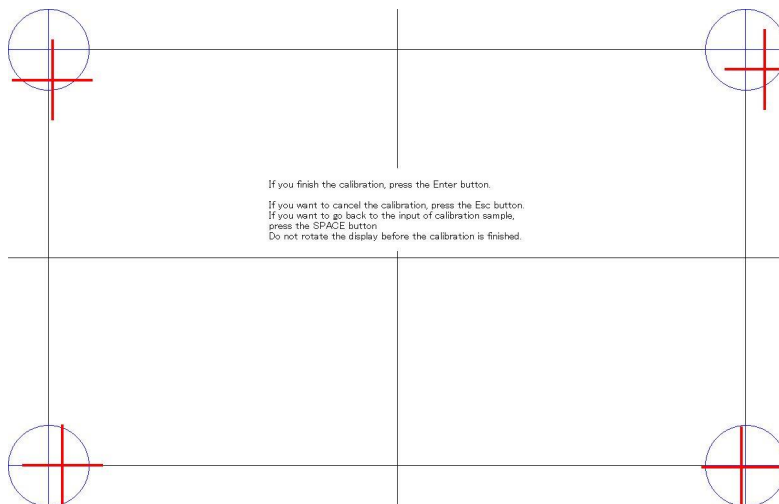
1. After selecting a driver in mouse configuration screen, click [Calibrate].
2. The below Calibration screen will appear on the monitor related with the touch screen of the selected driver.



If you want to input a calibration sample, tap the crosses on the screen as they appeared.
If you want to stop the input of calibration sample, press the EXC button.
Do not rotate the display before the calibration is finished.

3. Touch center of the markers on the screen. The markers will appear in order of left top, right top, left bottom and right bottom.
4. After touching all the markers, the below screen will appear.

The ideal points at calibration will be indicated with blue crosses while the touched (corrected) points will be indicated with red crosses.



5. Touch the screen to check if the calibration is successful.

If the calibration is successful, press [Enter].

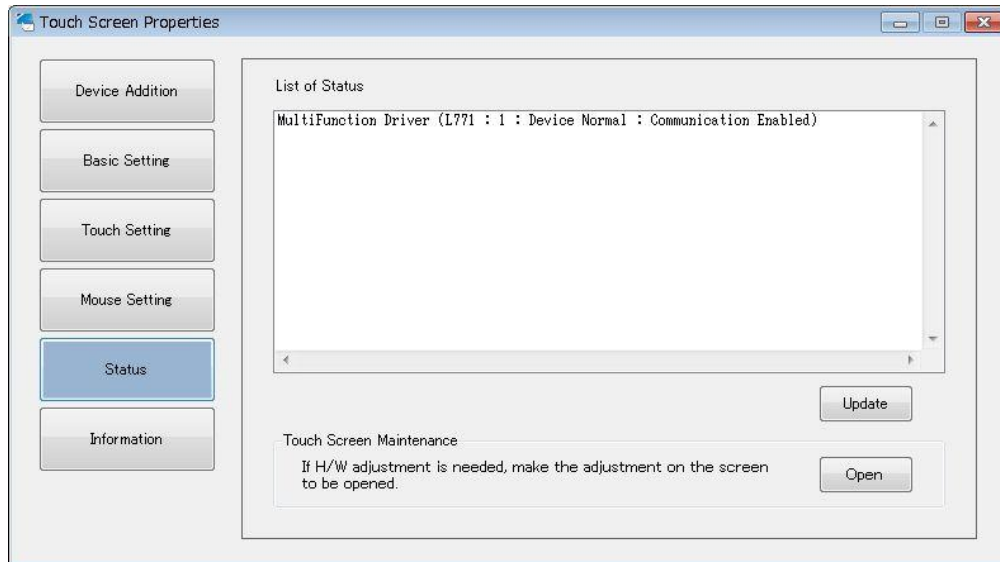
If you want to make calibration again, press [Space].

If you want to cancel calibration, press [ESC].

10. Status

■ Status of touch screen (driver) in operation

Status of the touch screen (driver) being operated will be listed.



■ Update Button

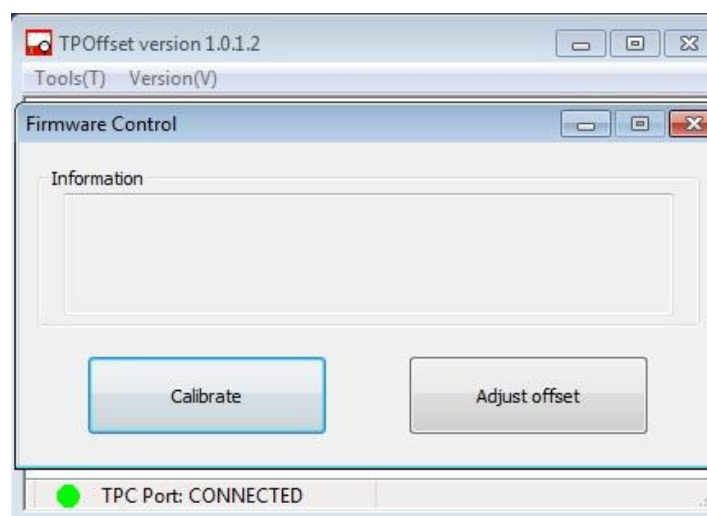
The List of Status will be updated to the latest status.

If the connected devices do not appear, click [Update].

■ Maintenance Tool Activation Button

Click [Open], then the maintenance tool will be activated.

If the connected devices do not appear, click [Update].



*The [Touch Screen Properties] cannot be operated when the maintenance tool is being activated.

*Regarding how to operate the maintenance tool, refer to [Maintenance Tool Operation Manual].

11. Information

- Various information will be indicated.



Version information of driver and the setting tool (Touch Screen Properties) can be checked.

DUS-DD v1.1.2.8 User's Guide

February 8, 2013

©2013 DMC Co., Ltd.

This document can be freely distributed, but any alternation to this document is prohibited.

DMC Co., Ltd.

<http://www.dmccoltd.com/english/>

11F Nisseki Takanawa Building, 2-18-10, Takanawa, Minato-ku, Tokyo 108-0074, Japan

Phone: +81-3-6721-6736 (English) Fax: +81-3-6721-6732