



Widescreen LCD Monitors

FlexScan® S

Common sense features, uncommon quality



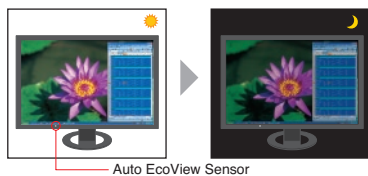
The FlexScan S series are energy-saving and ergonomic monitors in 24.1" and 22" sizes with VA and TN panel technology. Designed for business use, they are also ideal for CAD and amateur digital photography.

Optimized Brightness with Auto EcoView

A sensor on the front bezel measures ambient light and optimizes the screen's brightness, ensuring that these monitors are never too bright or too dark. This results in improved ergonomics and reduced eye strain, while cutting power consumption by up to 51%.

| Model | Auto EcoView OFF* | Auto EcoView ON | Power Reduction |
|-----------------|-------------------|-----------------|-----------------|
| FlexScan S2202W | 38 W | 23 W | 39% |
| FlexScan S2233W | 66 W | 32 W | 51% |
| FlexScan S2243W | 69 W | 36 W | 47% |
| FlexScan S2402W | 43 W | 27 W | 38% |
| FlexScan S2433W | 71 W | 40 W | 43% |

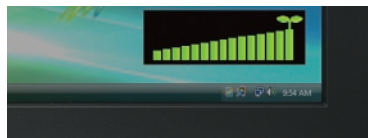
* Figures assume monitors are set to the default factory brightness of 100%.



Auto EcoView optimizes the screen's brightness to levels akin to viewing a sheet of paper under ambient light conditions.

Confirm Power Savings with EcoView Index

A user-activated on-screen index shows the level of power savings in correlation with the monitors' brightness to encourage environmental consciousness.



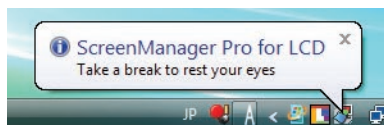
When EcoView Index is fully illuminated, the monitor is operating at optimum energy efficiency.

EyeCare Mode

The FlexScan S2433W, S2243W, and S2233W incorporate EyeCare mode which helps to mitigate eye fatigue when working in very dim ambient light. With just a touch of a button, you can reduce screen brightness to a minimum of 4 cd/m². EyeCare mode also works with the Auto EcoView function by automatically increasing or decreasing luminance to user-defined preset levels, thereby more accurately achieving ideal screen brightness in very dimly lit rooms.

EyeCare Manager

EIZO's EyeCare Manager prompts workers to take scheduled breaks to avoid eye fatigue caused by prolonged monitor use. EyeCare also totals and displays on-screen the monitors' usage hours for each day and month to promote improved work habits.



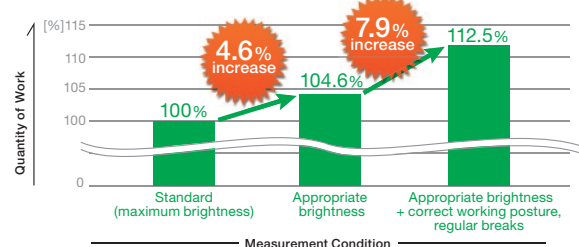
EyeCare reminds workers to take regular breaks to prevent eye fatigue.

Improved Efficiency, Reduced Visual Fatigue

EIZO conducted a survey in 2008 to establish the relationship between eye fatigue and monitor use. Results showed that features like Auto EcoView, ergonomic stands, and the EyeCare Manager helped reduce eye fatigue and improved work efficiency by 12.5%.

For a white paper regarding this study please visit www.eizo.com/global/support/wp/pdf/wp_08-001.pdf

Increases in Quantity of Monitor Work



Zero Watts When Turned Off

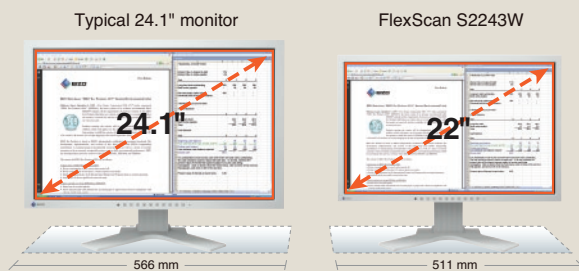
The power save mode and off timer on these monitors reduces their energy consumption to less than 1.5 watts. When turned off via the main power switch, they consume no electricity at all.

Preset Modes for Optimum Viewing

EIZO's Fine Contrast function has six preset modes: Text mode for office applications, Movie mode for video, Picture mode for graphics, sRGB mode for web browsing, EyeCare mode for use in very dimly-lit environments, and Custom mode for user-defined settings.

Compact, High Resolution Screen

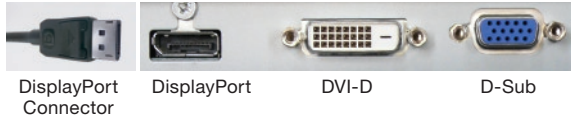
The FlexScan S2243W features a 16:10 aspect ratio with a 1920 x 1200 native resolution. Thanks to its 0.247 mm pixel pitch and display of 103 pixels per inch, it shows 30% more information than a typical 22" monitor with a 1680 x 1050 resolution. The FlexScan S2243W displays the same amount of information as a typical 24.1" monitor, but occupies 10% less desk space. This is ideal for offices or trading floors where a 24.1" monitor is desired, but cannot be installed due to space constraints.



The FlexScan S2243W occupies 10% less desk space than a typical 24.1" monitor, but displays the same amount of information.

Next Generation Connectivity

The FlexScan S2402W and S2202W come with DVI-D (digital) and D-Sub (analog) inputs while the other three models also include a DisplayPort (digital) input. With DisplayPort, audio and video signals are transmitted via a single, high-bandwidth cable at distances up to 15 meters without any signal degradation.



DVI Input Level Adjustment

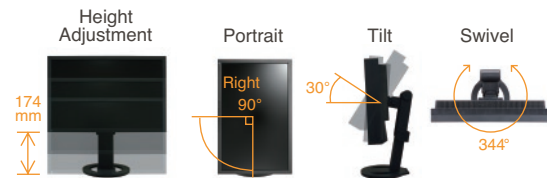
Compensates for degradation of image quality that may occur when connecting a monitor with a signal switch box or via a long cable.

Individual Adjustment of Gamma

To provide better image consistency in multi-monitor environments, EIZO performs advanced gamma adjustment at the factory, which minimizes discrepancies among monitor gamma characteristics.

Placement Flexibility

All models except the FlexScan S2202W come with the highly versatile FlexStand (shown below) which offers tilt, swivel, portrait rotation, and up to 174 mm of height adjustment. The FlexStand S2202W comes with a stand that features 100 mm of height adjustment, tilt, swivel, and portrait mode.



Power Management Software

EIZO EcoView NET software allows your organization to reduce its electric bills while minimizing its burden on the environment by centralizing control over the power settings of monitors on a network. For FlexScan S series and other EIZO monitors that support DDC/CI, you can adjust the brightness, turn the Auto EcoView function on and off,

Wide Color Gamut / EasyPIX Compatibility

The wide color gamut of the FlexScan S2243W and S2233W reproduces 95% of Adobe RGB, while that of the S2433W reproduces 96% of Adobe RGB. Compatibility with the optional EIZO EasyPIX accessory allows for simple color matching between monitor and photo prints.

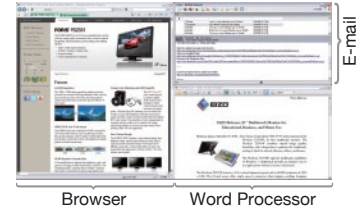


and lock the control buttons to prevent tampering with screen settings. You can also switch a PC's primary power and a monitor's secondary power on and off regardless of the manufacturer.

For details see www.eizo.com/global/products/accessories/flexscan/ecoview_net/index.html

Organize Applications with EIZO ScreenSlicer

This bundled software utility lets you more effectively use your screen through partitioning. Simply drop your windows into configurable partitioned areas and they will be aligned instantly (Windows 7, Vista, and XP compatible).

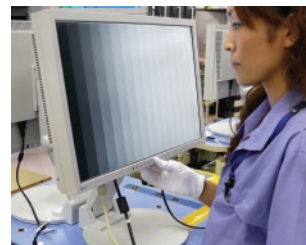


Software windows aligned in partitioned areas.

ScreenManager Pro for LCD and ScreenTuner

Developed for Windows and Mac OSes respectively and available from www.eizo.com, these two free applications let you adjust your monitor's color with your mouse rather than the OSD menu buttons. With ScreenManager Pro for LCD you can also assign a preset mode to a specific application so that mode becomes active whenever the application is in use.

Commitment to Quality

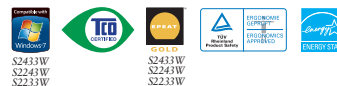


While outsourcing production is now common practice in the monitor industry, EIZO continues to manufacture its products the same way it has throughout its 40 year history — with its own staff at its own factories. This allows EIZO to keep close control over production quality and offer the industry's only 5-year manufacturer's limited warranty.



Customer Assurance

EIZO strives to create a better work environment by complying with strict environmental performance requirements for low energy consumption, product and package recyclability, and manufacturing processes, as well as specific ergonomic and functional conditions. This has earned all monitors in this brochure the TCO Displays 5.0 certification.



S2433W
S2243W
S2233W

S2433W
S2243W
S2233W

SPECIFICATIONS



| | FlexScan S2433W | FlexScan S2402W | FlexScan S2243W | FlexScan S2233W | FlexScan S2202W | |
|---------------------------------|------------------------------|---|---|---|---|---|
| Panel | Size | 24.1" / 61 cm (611 mm diagonal) | 24.1" / 61 cm (611 mm diagonal) | 22" / 56 cm (558 mm diagonal) | 22" / 56 cm (558 mm diagonal) | |
| | Display Size (H x V) | 518.4 x 324 mm | 518.4 x 324 mm | 473.8 x 296.1 mm | 473.8 x 296.1 mm | |
| | Type | VA (with overdrive circuit) | TN | VA (with overdrive circuit) | VA (with overdrive circuit) | |
| | Viewing Angles (H, V) | 178°, 178° (at contrast ratio of 10:1) | 170°, 160° (at contrast ratio of 10:1) | 178°, 178° (at contrast ratio of 10:1) | 178°, 178° (at contrast ratio of 10:1) | |
| | Brightness | 360 cd/m ² | 300 cd/m ² | 350 cd/m ² | 350 cd/m ² | |
| | Contrast Ratio | 1000:1 | 1000:1 | 1200:1 | 1200:1 | |
| | Response Time (Typical) | Gray-to-gray: 6 ms, black-white-black: 16 ms | Gray-to-gray: -, black-white-black: 5 ms | Gray-to-gray: 6 ms, black-white-black: 12 ms | Gray-to-gray: 6 ms, black-white-black: 12 ms | |
| | Native Resolution | 1920 x 1200 (16:10 aspect ratio) | 1920 x 1200 (16:10 aspect ratio) | 1920 x 1200 (16:10 aspect ratio) | 1680 x 1050 (16:10 aspect ratio) | |
| | Pixel Pitch | 0.270 x 0.270 mm | 0.270 x 0.270 mm | 0.247 x 0.247 mm | 0.282 x 0.282 mm | |
| | Display Colors | 16.77 million from a palette of 1.06 billion | 16.77 million from a palette of 1.06 billion | 16.77 million from a palette of 1.06 billion | 16.77 million from a palette of 1.06 billion | |
| | Wide Gamut Coverage | Adobe RGB: 96%, 92% vs. NTSC | - | Adobe RGB: 95%, 92% vs. NTSC | Adobe RGB: 95%, 92% vs. NTSC | |
| | Look-Up Table | 10 bits per color | 10 bits per color | 10 bits per color | 10 bits per color | |
| | Video and USB | D-Sub mini 15 pin | • | • | • | • |
| DVI-D 24 pin | | • (with HDCP support) | • (with HDCP support) | • (with HDCP support) | • (with HDCP support) | |
| DVI-I 29 pin | | - | - | - | - | |
| DisplayPort | | • (with HDCP support) | - | • (with HDCP support) | • (with HDCP support) | |
| Analog Scan. Freq. (H, V) | | 31 - 94 kHz, 55 - 76 Hz | 31 - 94 kHz, 55 - 76 Hz | 31 - 94 kHz, 55 - 76 Hz | 31 - 82 kHz, 55 - 76 Hz | |
| Digital Scan. Freq. (H, V) | | 31 - 76 kHz, 59 - 61 Hz (VGA Text: 69 - 71 Hz) | 31 - 76 kHz, 59 - 61 Hz (VGA Text: 69 - 71 Hz) | 31 - 76 kHz, 59 - 61 Hz (VGA Text: 69 - 71 Hz) | 31 - 65 kHz, 59 - 61 Hz (VGA Text: 69 - 71 Hz) | |
| USB Ports / Standard | | 1 upstream, 2 downstream / USB 2.0 | - | 1 upstream, 2 downstream / USB 2.0 | 1 upstream, 2 downstream / USB 2.0 | |
| Audio | Speakers | 0.5 W + 0.5 W speakers | 0.5 W + 0.5 W speakers | 0.5 W + 0.5 W speakers | 0.5 W + 0.5 W speakers | |
| | Input / Output Terminals | 3.5 mm stereo jack / 3.5 mm head-phone jack | 3.5 mm stereo jack / 3.5 mm head-phone jack | 3.5 mm stereo jack / 3.5 mm head-phone jack | 3.5 mm stereo jack / 3.5 mm head-phone jack | |
| | Power Requirements | AC 100 - 120 V / 200 - 240 V, 50 / 60 Hz | AC 100 - 120 V / 200 - 240 V, 50 / 60 Hz | AC 100 - 120 V / 200 - 240 V, 50 / 60 Hz | AC 100 - 120 V / 200 - 240 V, 50 / 60 Hz | |
| Power | Power Consumption | 40 W (typical), 95 W (maximum) | 27 W (typical), 58 W (maximum) | 36 W (typical), 90 W (maximum) | 32 W (typical), 90 W (maximum) | |
| | Power Save Mode | Less than 1.5 W | Less than 0.7 W | Less than 1.5 W | Less than 1.5 W | |
| | Height Adj. Range | 157 mm | 157 mm | 174 mm | 174 mm | |
| Physical Specifications | Tilt / Swivel / Pivot | 30° Up, 0° Down / 172° Right, 172° Left / 90° | 30° Up, 0° Down / 172° Right, 172° Left / 90° | 30° Up, 0° Down / 172° Right, 172° Left / 90° | 30° Up, 0° Down / 172° Right, 172° Left / 90° | |
| | Dimensions | With Stand: 566 x 381.5 - 538.5 x 242 - 256 mm; Without Stand: 566 x 367 x 85 mm | With Stand: 566 x 381.5 - 538.5 x 242 - 256 mm; Without Stand: 566 x 367 x 85 mm | With Stand: 511 x 347.5 - 521.5 x 240.5 - 256 mm; Without Stand: 511 x 333 x 85 mm | With Stand: 511 x 347.5 - 521.5 x 240.5 - 256 mm; Without Stand: 511 x 333 x 85 mm | With Stand: 507 x 439 - 521 x 208.5 mm; Without Stand: 507 x 333 x 74 mm |
| | Net Weight | With Stand: 10.2 kg; Without Stand: 7.2 kg | With Stand: 10.2 kg; Without Stand: 7.2 kg | With Stand: 9.6 kg; Without Stand: 6.6 kg | With Stand: 9.6 kg; Without Stand: 6.6 kg | |
| | Auto EcoView | • | • | • | • | |
| EcoView Features | EcoView Index | • | • | • | • | |
| | Screen Adjustment | Clock, Phase, Position, Range (Auto), Signal Filter, Screen Size (full screen, enlarge, normal), Smoothing (5 stages), Border Intensity | Clock, Phase, Position, Range (Auto), Signal Filter, Screen Size (full screen, enlarge, normal), Smoothing (5 stages), Border Intensity | Clock, Phase, Position, Range (Auto), Signal Filter, Screen Size (full screen, enlarge, normal), Smoothing (5 stages), Border Intensity | Clock, Phase, Position, Range (Auto), Signal Filter, Screen Size (full screen, enlarge, normal), Smoothing (5 stages), Border Intensity | |
| OSD Adjustment Functions | Color Adjustment | Brightness, Contrast, Gamma, Temperature, Saturation, Hue, Gain, Reset | Brightness, Contrast, Gamma, Temperature, Saturation, Hue, Gain, Reset | Brightness, Contrast, Gamma, Temperature, Saturation, Hue, Gain, Reset | Brightness, Contrast, Gamma, Temperature, Saturation, Hue, Gain, Reset | |
| | Power Management | Power Save (VESA DPM, DisplayPort Rev. 1.1a, and DVI DMPM), Off Timer | Power Save (VESA DPM and DVI DMPM), Off Timer | Power Save (VESA DPM, DisplayPort Rev. 1.1a, and DVI DMPM), Off Timer | Power Save (VESA DPM and DVI DMPM), Off Timer | |
| | Sound | Volume, Power Save, Source (DisplayPort) | Volume | Volume, Power Save, Source (DisplayPort) | Volume, Power Save, Source (DisplayPort) | |
| | Other Settings | Signal Switching, Product Information (name, serial number, resolution, operating time, etc.), OSD Menu Settings, Adjustment Lock, DDC/CI Lock, DVI Input Level, Languages (English, French, German, Italian, Japanese, Simplified and Traditional Chinese, Spanish, Swedish), Power Indicator, Reset | Signal Switching, Product Information (name, serial number, resolution, operating time, etc.), OSD Menu Settings, Adjustment Lock, DDC/CI Lock, DVI Input Level, Languages (English, French, German, Italian, Japanese, Simplified and Traditional Chinese, Spanish, Swedish), Power Indicator, Reset | Signal Switching, Product Information (name, serial number, resolution, operating time, etc.), OSD Menu Settings, Adjustment Lock, DDC/CI Lock, DVI Input Level, Languages (English, French, German, Italian, Japanese, Simplified and Traditional Chinese, Spanish, Swedish), Power Indicator, Reset | Signal Switching, Product Information (name, serial number, resolution, operating time, etc.), OSD Menu Settings, Adjustment Lock, DDC/CI Lock, DVI Input Level, Languages (English, French, German, Italian, Japanese, Simplified and Traditional Chinese, Spanish, Swedish), Power Indicator, Reset | |
| | Other Settings | Signal Switching, Product Information (name, serial number, resolution, operating time, etc.), OSD Menu Settings, Adjustment Lock, DDC/CI Lock, DVI Input Level, Languages (English, French, German, Italian, Japanese, Simplified and Traditional Chinese, Spanish, Swedish), Power Indicator, Reset | Signal Switching, Product Information (name, serial number, resolution, operating time, etc.), OSD Menu Settings, Adjustment Lock, DDC/CI Lock, DVI Input Level, Languages (English, French, German, Italian, Japanese, Simplified and Traditional Chinese, Spanish, Swedish), Power Indicator, Reset | Signal Switching, Product Information (name, serial number, resolution, operating time, etc.), OSD Menu Settings, Adjustment Lock, DDC/CI Lock, DVI Input Level, Languages (English, French, German, Italian, Japanese, Simplified and Traditional Chinese, Spanish, Swedish), Power Indicator, Reset | Signal Switching, Product Information (name, serial number, resolution, operating time, etc.), OSD Menu Settings, Adjustment Lock, DDC/CI Lock, DVI Input Level, Languages (English, French, German, Italian, Japanese, Simplified and Traditional Chinese, Spanish, Swedish), Power Indicator, Reset | |
| Other Features | Preset Modes | Fine Contrast (EyeCare, Text, Picture, Movie, sRGB, Custom), Auto Fine Contrast ¹ | Fine Contrast (Text, Picture, Movie, sRGB, Custom), Auto Fine Contrast ¹ | Fine Contrast (EyeCare, Text, Picture, Movie, sRGB, Custom), Auto Fine Contrast ¹ | Fine Contrast (Text, Picture, Movie, sRGB, Custom), Auto Fine Contrast ² | |
| | ScreenManager Pro for LCD | • | • | • | • | |
| | ScreenTuner | • | - | • | • | |
| General | Available Cabinet Colors | Gray, Black | Gray, Black | Gray, Black | Gray, Black | |
| | Certifications and Standards | TCO Displays 5.0, EPEAT Gold (US), TÜV/Ergonomics (including ISO 13406-2), TÜV/GS, c-Tick, CE, CB, cTUVus, FCC-B, Canadian ICES-003-B, TÜV/S, VCCI-B, EPA Energy Star, RoHS, WEEE, CCC, GOST-R | TCO Displays 5.0, EPEAT Silver (US), TÜV/Ergonomics (including ISO 13406-2), TÜV/GS, c-Tick, CE, CB, cTUVus, FCC-B, Canadian ICES-003-B, TÜV/S, VCCI-B, EPA Energy Star, RoHS, WEEE, CCC, GOST-R | TCO Displays 5.0, EPEAT Gold (US), TÜV/Ergonomics (including ISO 13406-2), TÜV/GS, c-Tick, CE, CB, cTUVus, FCC-B, Canadian ICES-003-B, TÜV/S, VCCI-B, EPA Energy Star, RoHS, WEEE, CCC, GOST-R | TCO Displays 5.0, EPEAT Gold (US), TÜV/Ergonomics (including ISO 13406-2), TÜV/GS, c-Tick, CE, CB, cTUVus, FCC-B, Canadian ICES-003-B, TÜV/S, VCCI-B, EPA Energy Star, RoHS, WEEE, CCC, GOST-R | TCO Displays 5.0, EPEAT Silver (US), TÜV/Ergonomics (including ISO 13406-2), TÜV/GS, c-Tick, CE, CB, cTUVus, FCC-B, Canadian ICES-003-B, TÜV/S, VCCI-B, EPA Energy Star, RoHS, WEEE, CCC, GOST-R |
| | Supplied Accessories | AC power cord, signal cables (DVI-D - DVI-D, D-Sub - D-Sub), USB cable, audio cable, Eizo LCD Utility Disk (PDF user's manual, ScreenManager Pro for LCD [USB], ScreenSlicer software), setup guide, warranty card | AC power cord, signal cables (DVI-D - DVI-D, D-Sub - D-Sub), audio cable, Eizo LCD Utility Disk (PDF user's manual, ScreenManager Pro for LCD [DDC/CI], ICC Profile, ScreenSlicer software), setup guide, warranty card | AC power cord, signal cables (DVI-D - DVI-D, D-Sub - D-Sub), USB cable, audio cable, Eizo LCD Utility Disk (PDF user's manual, ScreenManager Pro for LCD [USB], ScreenSlicer software), setup guide, warranty card | AC power cord, signal cables (DVI-D - DVI-D, D-Sub - D-Sub), USB cable, audio cable, Eizo LCD Utility Disk (PDF user's manual, ScreenManager Pro for LCD [USB], ScreenSlicer software), setup guide, warranty card | AC power cord, signal cables (DVI-D - DVI-D, D-Sub - D-Sub), audio cable, Eizo LCD Utility Disk (PDF user's manual, ScreenManager Pro for LCD [DDC/CI], ICC Profile, ScreenSlicer software), setup guide, warranty card |
| | Warranty | Five Years ² | Five Years ² | Five Years ² | Five Years ² | |

¹ The bundled ScreenManager Pro for LCD is needed to activate Auto Fine Contrast. The USB version is compatible with Microsoft Windows 7/Vista/XP/2000. The DDC/CI version is compatible with 7/Vista. ² The usage time is limited to 30,000 hours or less, and the warranty period of the LCD panel is limited to three years from the date of purchase.

EIZO NANO CORPORATION

153 Shimokashiwano, Hakusan, Ishikawa 924-8566 Japan
 Phone +81-76-277-6792 Fax: +81-76-277-6793
 www.eizo.com

© 2010 Eizo Nanao Corporation
 All product names are trademarks or registered trademarks of their respective companies.
 Eizo EcoView NET, Eizo ScreenSlicer, and Eizo EasyPIX are trademarks, and ScreenManager, FlexScan, and Eizo are registered trademarks of Eizo Nanao Corporation.
 Specifications are subject to change without notice.

