



LCD Monitors for Graphics

FlexScan® SX

Simply Exceptional Color



Vivid Color with Spacious Screen Sizes



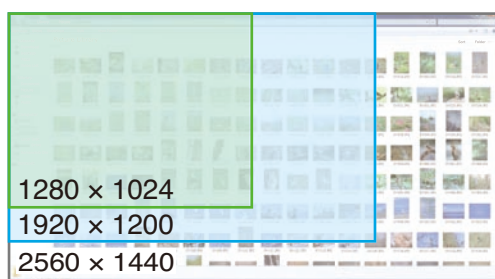
FlexScan SX2762W

The SX Series — Built for Color Professionals

The EIZO FlexScan SX series is the preferred choice of photographers, graphic designers, motion picture editors and other professionals for whom color reproduction is critical. The series delivers abundant features based on EIZO's cutting-edge color reproduction technologies, boasts advanced ergonomics, and provides easy hardware calibration with the optional EIZO EasyPIX color matching tool.

Wide Format for Creative Work

The widescreen format of SX series monitors provides the screen space that professionals who work with still and moving images crave. All three monitors have 178° viewing angles, so users can view images clearly from almost any position. The 27" SX2762W provides an astounding 2560 × 1440 native resolution, while the 24.1" SX2462W and 22" SX2262W both offer an impressive 1920 × 1200. The combination of expansive screen size and superb image quality makes these monitors the ideal choice for all types of imaging applications.

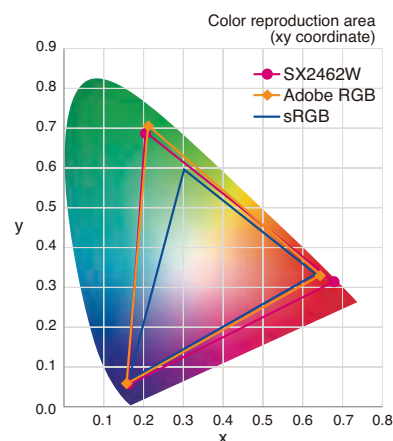


IPS and VA Panel Technology

The FlexScan SX series incorporates the two panel technologies preferred for color-critical work. IPS (in-plane switching) panels, which offer excellent color reproduction with very little color shift when viewed at an angle, are used with the SX2762W and the SX2462W. VA (vertical alignment) panels, known for their high contrast ratios that produce deep blacks, are used with the SX2262W.

Wide Color Gamut

With a wide color gamut that reproduces nearly 100% of the Adobe RGB color space, these models display almost every possible color in photos taken in a digital camera's Adobe RGB mode. They also have an sRGB mode to accurately reproduce this narrower but commonly used color space. This ensures that colors meant for sRGB, such as those used on web pages and photos taken with a digital camera in sRGB mode, will be reproduced on the screen as intended.

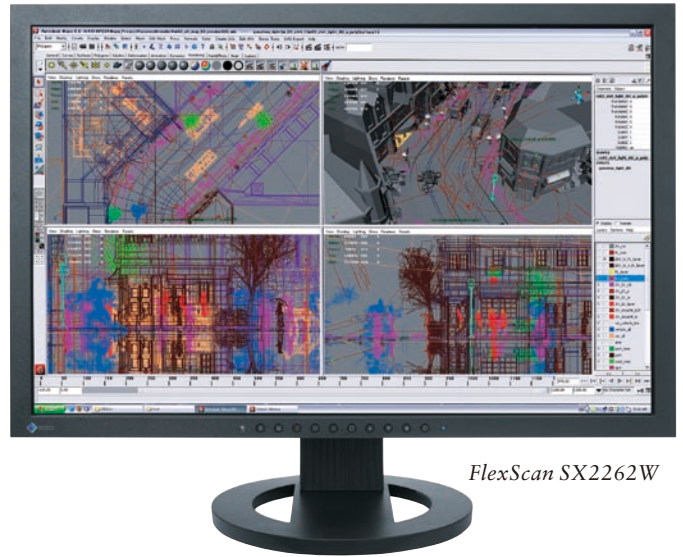


24.1"



FlexScan SX2462W

22"



FlexScan SX2262W

10-Bit Simultaneous Display

The SX series offers 10-bit color display* from a 16-bit look-up table which means it can show more than one billion colors simultaneously. This is 64 times as many colors as you get with 8-bit display. The result is even smoother color gradations and reduced Delta-E between two adjacent colors. The SX2762W supports 10-bit color via its DisplayPort, Mini DisplayPort, and DVI-D inputs, while the SX2462W and SX2262W support it via DisplayPort.

**A graphics board and software which support 10-bit output are also necessary for 10-bit display.*



Typical monitor with 8-bit display



8-bit display with DVI connection on FlexScan SX monitors



10-bit display with DisplayPort connection on FlexScan SX monitors

Preset and Custom Modes

Different types of creative work require different color settings. To ensure you get the right one, these monitors come with three customizable preset modes for assigning your own values for brightness, contrast, color temperature, and gamma. In addition, Text, Picture, Movie, and sRGB* modes come built-in. You can switch modes automatically with the bundled ScreenManager Pro for LCD software (for the Windows OS) or manually with the press of a button.

**The SX2762W also comes with Paper mode for simulating the look of printed paper.*

Moving Images in Overdrive

An overdrive circuit is included to reduce gray-to-gray response time and ensure that moving images look clean and sharp with an absolute minimum of blurring and ghosting.



Without overdrive circuit

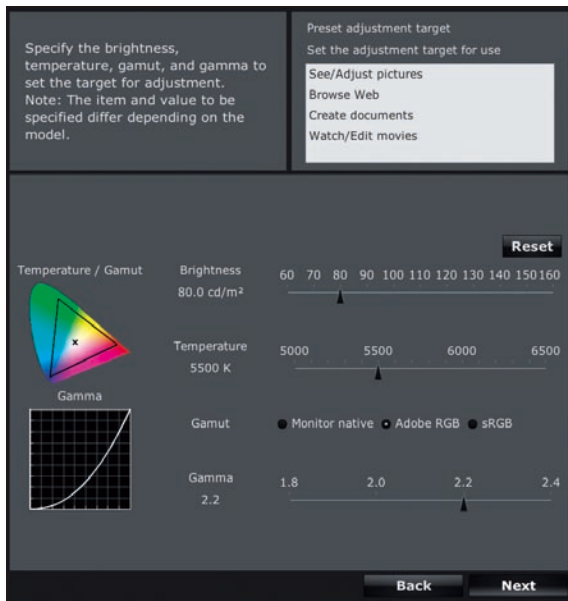


With overdrive circuit

Expert Color Made Exceptionally Easy

Hardware Calibration with EIZO EasyPIX

EIZO EasyPIX lets you calibrate the monitor itself (hardware calibration) rather than the computer's graphics board (software calibration). This ensures more accurate and predictable color. The process is simple — just select the desired color gamut, brightness, color temperature and gamma, then calibrate. EIZO EasyPIX is sold separately and consists of software and the EIZO EX1 color sensor.



Brightness and Chroma Uniformity with DUE

Fluctuations in brightness and chroma on different parts of the screen are characteristic of LCD panels. Generally, the larger the screen, the more noticeable these uniformity errors become. EIZO's Digital Uniformity Equalizer (DUE) helps to compensate for these errors, resulting in a much more uniform image.



Without DUE: uneven brightness distribution

With DUE: uniform brightness across the screen

Detailed Color Control

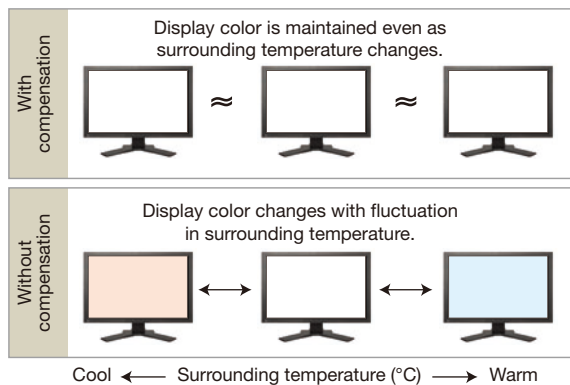
Calibration with a color sensor is the surest way to achieve your desired color settings, but you can adjust a wide range of color parameters through the on-screen display menu. These include brightness, gamma, saturation, hue, gain and color temperature from 4,000 K to 10,000 K in 500 K increments*. If you prefer adjusting color with your mouse rather than the monitor's front buttons, EIZO offers two free applications downloadable from www.eizo.com that let you do just that — ScreenManager Pro for LCD (Windows) and ScreenTuner (Mac).

*The FlexScan SX2762W can be adjusted in increments of 100K.

Brightness and Color Drift Stabilization

To ensure proper display of color, EIZO-patented technology stabilizes the monitor's brightness level after startup or coming out of power saving mode. Furthermore, a temperature sensor detects and automatically suppresses changes in color and brightness caused by fluctuations in the surrounding temperature.

Color Drift Compensation

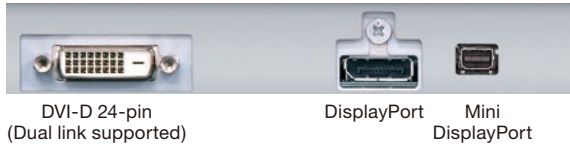


Connectivity, Ergonomics & Energy Savings

Three Inputs Including DisplayPort

The SX series lets you connect up to three PCs to a single monitor. The 27" SX2762W offers DVI-D, DisplayPort, and Mini DisplayPort. (Mini DisplayPort lets you connect to Mac- and Windows-based notebook computers.) The 24.1" SX2462W and 22" SX2262W both offer dual DVI-I inputs which accept digital and analog signals, and one DisplayPort input.

SX2762W

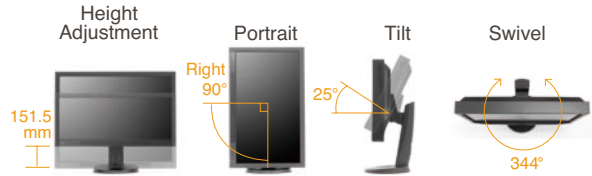


SX2462W and SX2262W



Viewing from the Right Angle

All models come with EIZO's FlexStand, which offers tilt, swivel, and 90° rotation for portrait mode viewing. The 27" SX2762W features 151.5 mm of height adjustment while the SX2462W offers 157 mm and the SX2262W offers 174 mm.



Optimized Brightness with Auto EcoView

A sensor on the front of the monitor measures ambient light and optimizes the screen's brightness to ensure the screen is never too bright or too dark. If preferred, Auto EcoView can be deactivated in the OSD menu.

Energy and Environmental Efficiency Index

A user-activated EcoView Index displays the level of power savings and equivalent amount of CO₂ reduction compared to using the monitor without Auto EcoView activated and with the screen set at a brightness of 100%.



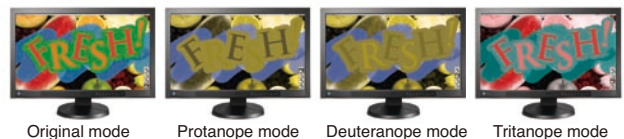
When the green leaves are fully illuminated, the monitor is operating at optimum energy efficiency.

On-Screen Button Guide

Graphics professionals often work in a dimly lit environment which can make it difficult to read a monitor's adjustment buttons. The FlexScan SX series, however, includes an on-screen button guide that labels what each of the buttons are for so you can easily navigate the OSD menu.

Color Vision Deficiency Simulation

To avoid creating inconveniences and even dangers for those with colorblindness, care must be taken when choosing color schemes for everyday items such as maps, road signs, web sites, and power indicator lights. These monitors can instantly simulate how still and moving images appear to people with color vision deficiency, and do so much faster than software-based tools that slow down with larger files.





FlexScan SX2762W



FlexScan SX2462W



FlexScan SX2262W

Panel Size	27" / 68 cm (684 mm diagonal)	24.1" / 61 cm (611 mm diagonal)	22" / 56 cm (558 mm diagonal)
Active Display Size (H × V)	596.7 × 335.6 mm	518.4 × 324 mm	473.8 × 296.1 mm
Panel Type	IPS (with overdrive circuit)	IPS (with overdrive circuit)	VA (with overdrive circuit)
Viewing Angles (H, V)	178°, 178° (at contrast ratio of 10:1)	178°, 178° (at contrast ratio of 10:1)	178°, 178° (at contrast ratio of 10:1)
Brightness	270 cd/m ²	270 cd/m ²	280 cd/m ²
Contrast	850:1	850:1	1000:1
Response Time (Typical)	Gray-to-gray: 6 ms, black-white-black: 12 ms	Gray-to-gray: 5 ms, black-white-black: 13 ms	Gray-to-gray: 6 ms, black-white-black: 12 ms
Native Resolution	2560 × 1440 (16:9 aspect ratio)	1920 × 1200 (16:10 aspect ratio)	1920 × 1200 (16:10 aspect ratio)
Pixel Pitch	0.2331 × 0.2331 mm	0.270 × 0.270 mm	0.247 × 0.247 mm
Maximum Display Colors	1.07 billion from a palette of 278 trillion	DVI: 16.77 million from a palette of 278 trillion DisplayPort: 1.07 billion from a palette of 278 trillion	DVI: 16.77 million from a palette of 278 trillion DisplayPort: 1.07 billion from a palette of 278 trillion
Wide Gamut Coverage	Adobe RGB: 97%, 102% vs. NTSC	Adobe RGB: 98%, 102% vs. NTSC	Adobe RGB: 95%, 92% vs. NTSC
Look-Up Table	16 bits per color	16 bits per color	16 bits per color
Dot Clock	242 MHz	Analog: 170 MHz, Digital: 164.5 MHz	Analog: 170 MHz, Digital: 164.5 MHz
Analog Scanning Frequency (H, V)	–	31 – 76 kHz, 49 – 86 Hz	31 – 76 kHz, 49 – 86 Hz
Digital Scanning Frequency (H, V)	26 – 89 kHz, 23.75 – 63 Hz (VGA Text: 69 – 71 Hz)	31 – 76 kHz, 59 – 61 Hz (VGA Text: 69 – 71 Hz)	31 – 76 kHz, 59 – 61 Hz (VGA Text: 69 – 71 Hz)
Video Input Terminals	DisplayPort (with HDCP), Mini DisplayPort (with HDCP), DVI-D 24 pin	DVI-I 29 pin × 2 (with HDCP), DisplayPort (with HDCP)	DVI-I 29 pin × 2 (with HDCP), DisplayPort (with HDCP)
USB Ports / Standard	1 upstream, 2 downstream / USB 2.0	1 upstream, 2 downstream / USB 2.0	1 upstream, 2 downstream / USB 2.0
Plug & Play	VESA DDC 2B	VESA DDC 2B	VESA DDC 2B
Power Requirements	AC 100 – 120 V / 200 – 240 V, 50 / 60 Hz	AC 100 – 120 V / 200 – 240 V, 50 / 60 Hz	AC 100 – 120 V / 200 – 240 V, 50 / 60 Hz
Power Consumption	64 W (typical), 160 W (maximum)	48 W (typical), 95 W (maximum)	45 W (typical), 90 W (maximum)
Power Save Mode	Less than 1 W	Less than 0.9 W	Less than 0.9 W
Height Adjustment Range	151.5 mm (maximum 190 mm)	157 mm	174 mm
Tilt / Swivel / Pivot	25° Up, 0° Down / 172° Right, 172° Left / 90°	30° Up, 0° Down / 172° Right, 172° Left / 90°	30° Up, 0° Down / 172° Right, 172° Left / 90°
Dimensions (W × H × D)	With Stand: 646 × 425 – 576.5 × 281.5 mm Without Stand: 646 × 402 × 92 mm	With Stand: 566 × 381.5 – 538.5 × 242 – 256 mm Without Stand: 566 × 367 × 85 mm	With Stand: 511 × 347.5 – 521.5 × 240.5 – 256 mm Without Stand: 511 × 333 × 85 mm
Net Weight	With Stand: 13.6 kg, Without Stand: 9.7 kg	With Stand: 10.2 kg, Without Stand: 7.2 kg	With Stand: 9.6 kg, Without Stand: 6.6 kg
Preset Modes	Color Mode (Paper, Text, Picture, Movie, sRGB, User1, User2, User3), Auto Fine Contrast ¹	Color Mode (Text, Picture, Movie, sRGB, User1, User2, User3), Auto Fine Contrast ¹	Color Mode (Text, Picture, Movie, sRGB, User1, User2, User3), Auto Fine Contrast ¹
EcoView Settings	Auto EcoView, EcoView Index, EcoView Sense	Auto EcoView, EcoView Index	Auto EcoView, EcoView Index
Screen Adjustment	Screen Size (full screen, enlarge, normal)	Clock, Phase, Position, Range (Auto), Screen Size (full screen, enlarge, normal)	Clock, Phase, Position, Range (Auto), Screen Size (full screen, enlarge, normal)
Color Adjustment	Brightness, Contrast, Independent 6-Color Control, Gamma, Temperature, Saturation, Hue, Gain, Contrast and Outline Enhancer, Reset	Brightness, Contrast, Independent 6-Color Control, Gamma, Temperature, Saturation, Hue, Gain, Contrast and Outline Enhancer, Reset	Brightness, Contrast, Independent 6-Color Control, Gamma, Temperature, Saturation, Hue, Gain, Contrast and Outline Enhancer, Reset
Power Management	Power Save (DisplayPort / Mini DisplayPort: Rev. 1.1a, DVI: DVI DMPM), Eco Timer	Power Save (VESA DPM, DisplayPort Rev. 1.1a, and DVI DMPM), Eco Timer	Power Save (VESA DPM, DisplayPort Rev. 1.1a, and DVI DMPM), Eco Timer
Other Settings	Signal Switching, Product Information, OSD Menu Settings, Auto Sharpness, Mode Preset, Adjustment Lock, DDC/CI Lock, Languages (English, German, French, Italian, Japanese, Simplified Chinese, Spanish, Swedish, Traditional Chinese), Power Indicator, All Reset	Signal Switching, Product Information, OSD Menu Settings, Auto Sharpness, Mode Preset, Adjustment Lock, DDC/CI Lock, Languages (English, German, French, Italian, Japanese, Simplified Chinese, Spanish, Swedish, Traditional Chinese), Power Indicator, All Reset	Signal Switching, Product Information, OSD Menu Settings, Auto Sharpness, Mode Preset, Adjustment Lock, DDC/CI Lock, Languages (English, German, French, Italian, Japanese, Simplified Chinese, Spanish, Swedish, Traditional Chinese), Power Indicator, All Reset
Certifications and Standards	CUDO certified mark, TCO'03, TÜV/Ergonomics (including ISO 9241-307 [Pixel fault class I]), TÜV/GS, c-Tick, CE, CB, cTUVus, FCC-B, Canadian ICES-003-B, TÜV/S, VCCI-B, RoHS, WEEE, CCC, GOST-R	CUDO certified mark, TCO Displays 5.0, TÜV/Ergonomics (including ISO 9241-307 [Pixel fault class I]), TÜV/GS, c-Tick, CE, CB, cTUVus, FCC-B, Canadian ICES-003-B, TÜV/S, VCCI-B, RoHS, WEEE, CCC, GOST-R	CUDO certified mark, TCO'03, TÜV/Ergonomics (including ISO 9241-307 [Pixel fault class I]), TÜV/GS, c-Tick, CE, CB, cTUVus, FCC-B, Canadian ICES-003-B, TÜV/S, VCCI-B, RoHS, WEEE, CCC, GOST-R
Supplied Accessories	AC power cord, signal cable (DVI-D – DVI-D [dual link supported]), USB cable, EIZO LCD Utility Disk (PDF user's manual, ScreenManager Pro for LCD, EIZO ScreenSlicer software), setup guide, 4 screws for mount option, warranty card	AC power cord, signal cables (DVI-D – DVI-D, DVI-I – D-Sub mini 15 pin), USB cable, setup guide, EIZO LCD Utility Disk (PDF user's manual, ScreenManager Pro for LCD [USB], EIZO ScreenSlicer software), 4 screws for mount option, warranty card	AC power cord, signal cables (DVI-D – DVI-D, DVI-I – D-Sub mini 15 pin), USB cable, setup guide, EIZO LCD Utility Disk (PDF user's manual, ScreenManager Pro for LCD, EIZO ScreenSlicer software), 4 screws for mount option, warranty card
Warranty	Five Years ²	Five Years ²	Five Years ²

¹ The bundled ScreenManager Pro for LCD is necessary to activate Auto Fine Contrast. ScreenManager Pro for LCD is compatible with Microsoft Windows 7/Vista/XP. ² The usage time is limited to 30,000 hours or less, and the warranty period of the LCD panel is limited to three years from the date of purchase. With current LCD technology, a panel may contain a limited number of missing or flickering pixels.

Accessories

For additional functionality, attachable speakers, panel protector, and other accessories are available.

For more information, please see www.eizo.com/global/products/accessories/

Customer Assurance

The FlexScan SX series is backed by the industry's only 5-year manufacturer's limited warranty.



©2011 Eizo Nanao Corporation

All product names and logos are trademarks or registered trademarks of their respective companies. EIZO EasyPIX is a trademark, and ScreenManager, FlexScan, and EIZO are registered trademarks of EIZO Nanao Corporation.

Adobe product screenshots reprinted with permission from Adobe Systems Incorporated. Specifications are subject to change without notice.

Published on chlorine-free paper. (110909b) Printed in Japan, 10, 2011, 3K



EIZO NANAO CORPORATION

153 Shimokashiwano, Hakusan, Ishikawa 924-8566 Japan

Phone +81-76-277-6792 Fax: +81-76-277-6793

www.eizo.com

