



Widescreen LCD Monitors

FlexScan EV

EcoView

A Simple Equation For Economy



The FlexScan EV series embodies EIZO's "EcoView" concept of combining ergonomic and environmental features for an economical result. A compact design, flexible stand, and energy-saving LED backlights make these monitors ideal for trading floors, government facilities, offices, and homes.



Ergonomics

Clear View from Different Angles

The FlexScan EV2335W has a non-glare IPS panel with 178° viewing angles so it exhibits minimal change in contrast and hue when viewed from off center, making it ideal for a multi-monitor setup.

The FlexScan EV2315W has 170° vertical and 160° horizontal viewing angles. It comes with an "Up View" function which minimizes the washing out of colors for improved visibility in environments where the user must look up to see the screen.



Panel with narrow viewing angles



IPS panel



Up View Off



Up View On

Paper Mode and EyeCare Filter Reduce Eye Fatigue

Designed to reduce eye fatigue, Paper mode simulates the look of printed paper and helps prevent eyestrain when reading documents. What's more, a new feature called EyeCare Filter, available with the bundled ScreenManager Pro software, comes with several filter patterns that resemble different types of paper.



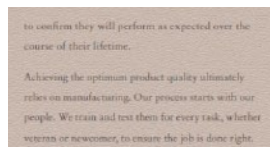
Choice of filter patterns



sRGB Mode



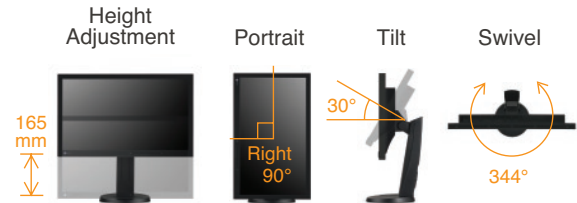
Paper Mode



Paper Mode with EyeCare Filter

Versatile Positioning

These monitors come with the highly versatile FlexStand 2 which offers tilt, swivel, portrait rotation, laptop-like screen placement, and 165 mm of height adjustment.



Adjustable to Just 1% of Maximum Brightness

In a dimly-lit work environment, a monitor with low brightness settings will be more comfortable to use. Both models come with LED backlights that allow for adjusting the brightness to just 1% (about 3 cd/m²) of the maximum. With typical CCFL backlights the lowest you could adjust to would be a much brighter 20%.



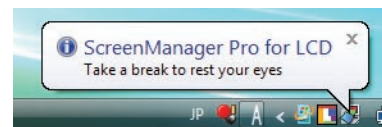
3 cd/m² (1% brightness)



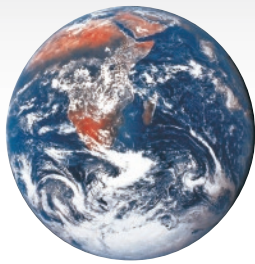
250 cd/m² (100% brightness)

EyeCare Manager

EIZO's EyeCare Manager, another feature available with the bundled ScreenManager Pro software, prompts workers to take scheduled breaks to avoid eye fatigue caused by prolonged monitor use. EyeCare also totals and displays on-screen the monitors' usage hours for each day and month to promote worker awareness of how much time they spend in front of their monitors.



EyeCare reminds workers to take regular breaks to prevent eye fatigue.



Environment

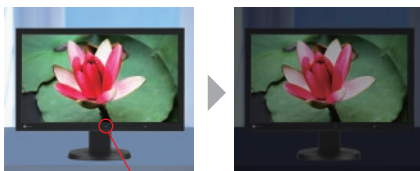
Environmentally-Friendly LED Backlight



Both models use an LED backlight which contains no mercury. The backlight also provides significant power savings compared to conventional CCFL backlights, requiring just 16 watts during normal use and less than 0.1 watts in power-save mode.

Optimized Brightness

Two original EIZO features are included for optimal screen brightness. Auto EcoView measures the ambient light and automatically adjusts the screen's brightness accordingly. A new function called EcoView Optimizer fine-tunes these changes by further adjusting the screen's brightness depending on the kind of content being displayed. Together, these two features trim power usage by up to 54% while reducing eye fatigue.



Auto EcoView Sensor

Recycled Plastic

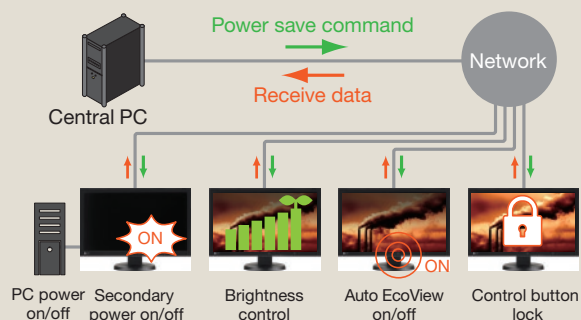
The front and rear cabinets as well as the front buttons are partially made of recycled plastic.

Power Management Software

EIZO EcoView NET software allows your organization to reduce its electric bills while minimizing its burden on the environment by centralizing control over the power settings of monitors on a network. For FlexScan EV series and other EIZO monitors that support DDC/CI, you can adjust the brightness, turn the Auto EcoView function on and off, and lock the control buttons to prevent tampering with screen settings. You can also switch a PC's primary power and a monitor's secondary power on and off regardless of the manufacturer.

EcoView NET summarizes and displays how much power is saved for each monitor as a result of using it over a

specified period of time. It is compatible with various Windows operating systems and is available free of charge. Please see www.eizo.com for details.

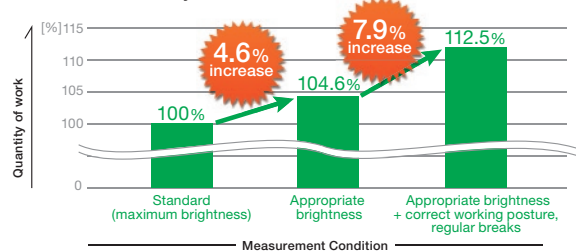


Economy

Improved Work Efficiency, Reduced Visual Fatigue

EIZO conducted a survey to establish the relationship between eye fatigue and monitor use. The results showed that features like Auto EcoView and ergonomic stands helped reduce eye fatigue and improved work efficiency by 12.5%.

Increases in Quantity of Monitor Work



Lower Power Consumption for Greater Savings

Auto EcoView cuts power consumption by up to 54% compared to operating the monitor at the default brightness of 100%.

Model*	Auto EcoView OFF*	Auto EcoView ON	Power Reduction
FlexScan EV2335W	35 W	16 W	54%
FlexScan EV2315W	31 W	16 W	48%

*Figures for Auto EcoView turned off assume monitors are set to the default factory brightness of 100%.

5-Year Manufacturer's Limited Warranty

EIZO backs these monitors with a 5-year warranty. This makes them an investment that pays off over time — doing away with worries of frequent product replacement and resultant downtime.



DisplayPort Connectivity

A DisplayPort input with the FlexScan EV2335W allows digital audio and video signal transmission via a single, high-bandwidth cable at distances up to 15 meters without any signal degradation. DVI-D and D-Sub inputs are also included with both monitors.

Built-In Speaker and Headphone Jack

One 0.5-watt internal speaker and a headphone jack are included.

Smooth Playback of Moving Images

An overdrive circuit on the FlexScan EV2335W reduces gray-to-gray response time of just 6 ms to ensure that moving images look clean and sharp.

Detailed Color Control

The OSD menu offers a wide array of color adjustment function including brightness, contrast, gamma, saturation, hue, gain, and color temperature from 4,000 K to 10,000 K in 500 K increments.

Preset Modes for Optimum Viewing

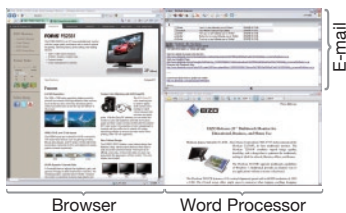
Paper, Movie, sRGB, and two Custom (user-defined settings) preset modes are included for optimum viewing of different kinds of content.

ScreenManager Pro

Also bundled, this software lets you adjust your monitor's color with your mouse rather than the OSD menu buttons. You can also set the off timer, adjust speaker volume, and assign a preset mode to a specific application so that mode becomes active whenever the application is in use (Windows 7 and Vista compatible).

EIZO ScreenSlicer

This bundled software utility lets you more effectively use your screen through partitioning. Simply drop your windows into configurable partitioned areas and they will be aligned instantly (Windows 7, Vista, and XP compatible).



Software windows aligned in partitioned areas.

Eco Labeling

These models comply with stringent international labels for ergonomics and energy savings like TCO Displays 5.1, EPA Energy Star, and EPEAT Gold.



EIZO NANAO CORPORATION

153 Shimokashiwano, Hakusan, Ishikawa 924-8566 Japan
Phone +81-76-277-6792 Fax: +81-76-277-6793
www.eizo.com



	FlexScan EV2335W	FlexScan EV2315W
Panel Size	23" / 58 cm (584 mm diagonal)	23" / 58 cm (584 mm diagonal)
Active Display Size (H x V)	509.8 x 286.7 mm	509.8 x 286.7 mm
Panel Type	IPS (with overdrive circuit)	TN
Viewing Angles (H, V)	178°, 178° (at contrast ratio of 10:1)	170°, 160° (at contrast ratio of 10:1)
Brightness	250 cd/m ²	250 cd/m ²
Contrast	1000:1	1000:1
Response Time (Typical)	Gray-to-gray: 6 ms, black-white-black: 16 ms	black-white-black: 5 ms
Native Resolution	1920 x 1080 (16: 9 aspect ratio)	1920 x 1080 (16: 9 aspect ratio)
Pixel Pitch	0.2655 x 0.2655 mm	0.2655 x 0.2655 mm
Display Colors	16.77 million, 8-bit display	16.77 million, 8-bit display
D-Sub mini 15-pin	•	•
DVI-D 24 pin	• (with HDCP)	• (with HDCP)
DisplayPort	• (with HDCP)	–
Analog Scanning Freq. (H, V)	31 – 81 kHz, 55 – 76 Hz	31 – 68 kHz, 55 – 61 Hz
Digital Scanning Freq. (H, V)	31 – 68 kHz, 59 – 61 Hz (VGA Text: 69 – 71 Hz)	31 – 68 kHz, 59 – 61 Hz
Speakers	0.5 W speaker	0.5 W speaker
Input / Output Terminals	3.5 mm stereo jack / 3.5 mm headphone jack	3.5 mm stereo jack / 3.5 mm headphone jack
Power Requirements	AC 100 – 120 V / 200 – 240 V, 50 / 60 Hz	AC 100 – 120 V / 200 – 240 V, 50 / 60 Hz
Power Consumption	16 W (typical), 35 W (maximum)	16 W (typical), 31 W (maximum)
Power Save Mode	Less than 0.1 W	Less than 0.1 W
Height Adj. Range	With Stand: 165 mm	With Stand: 165 mm
Tilt / Swivel / Pivot	With Stand: 30° Up, 0° Down / 172° Right, 172° Left / 90°	With Stand: 30° Up, 0° Down / 172° Right, 172° Left / 90°
Dimensions (W x H x D)	With Stand: 547 x 360 – 518 x 245.5 mm Without Stand: 547 x 334 x 63.5 mm	With Stand: 547 x 360 – 518 x 245.5 mm Without Stand: 547 x 334 x 63.5 mm
Net Weight	With Stand: 6.7 kg, Without Stand: 4.0 kg	With Stand: 6.2 kg, Without Stand: 3.5 kg
Auto EcoView	•	•
EcoView Index	•	•
EcoView Optimizer	•	•
Screen Adjustment	Clock, Phase, Position, Range (Auto), Screen Size (full screen, enlarge, normal), Smoothing (5 stages), Border Intensity	Clock, Phase, Position, Range (Auto), Screen Size (full screen, enlarge), Smoothing (5 stages), Border Intensity
Color Adjustment	Brightness, Contrast, Gamma, Temperature, Saturation, Hue, Gain, Overdrive, Reset	Brightness, Contrast, Gamma, Temperature, Saturation, Hue, Gain, Reset
Power Management	Power Save (VESA DPM, DisplayPort Rev. 1.1a, and DVI DMPM), Off Timer	Power Save (VESA DPM, and DVI DMPM), Off Timer
Sound	Volume, Power Save, Source (DisplayPort)	Volume, Power Save
Other Settings	Signal Switching, Product Information (name, serial number, resolution, operating time, etc.), OSD Menu Settings, Adjustment Lock, DDC/CI Lock, Languages (English, French, German, Italian, Japanese, Simplified and Traditional Chinese, Spanish, Swedish), Power Indicator, Reset	Signal Switching, Up View, Product Information (name, serial number, resolution, operating time, etc.), OSD Menu Settings, Adjustment Lock, DDC/CI Lock, Languages (English, French, German, Italian, Japanese, Simplified and Traditional Chinese, Spanish, Swedish), Power Indicator, Reset
Preset Modes	Fine Contrast (Paper, Movie, sRGB, User1, User2), Auto Fine Contrast ¹	Fine Contrast (Paper, Movie, sRGB, User1, User2), Auto Fine Contrast ¹
Available Cabinet Colors	Black, Gray & Black	Black, Gray & Black
Certifications and Standards	TCO Displays 5.1, EPEAT Gold (US), TÜV/ Ergonomics (including ISO 9241-307), TÜV/GS, C-tick, CE, CB, cTÜVus, FCC-B, Canadian ICES-003-B, TÜV/S, VCCI-B, EPA Energy Star, RoHS, WEEE	TCO Displays 5.1, EPEAT Gold (US), TÜV/ Ergonomics (including ISO 9241-307), TÜV/GS, C-tick, CE, CB, cTÜVus, FCC-B, Canadian ICES-003-B, TÜV/S, VCCI-B, EPA Energy Star, RoHS, WEEE
Supplied Accessories	AC power cord, signal cables (DVI-D – DVI-D, DisplayPort), audio cable, EIZO LCD Utility Disk (PDF user's manual, ScreenManager Pro for LCD [DDC/CI], EIZO ScreenSlicer software, warranty card), setup guide	AC power cord, signal cables (DVI-D – DVI-D, D-Sub – D-Sub), audio cable, EIZO LCD Utility Disk (PDF user's manual, ScreenManager Pro for LCD [DDC/CI], EIZO ScreenSlicer software, warranty card), setup guide
Warranty	Five Years ²	Five Years ²

¹ The bundled ScreenManager Pro for LCD is needed to activate Auto Fine Contrast and is compatible with Windows 7/Vista. ² The usage time is limited to 30,000 hours or less, and the warranty period of the LCD panel is limited to three years from the date of purchase.

