

User's Manual

ScreenManager® Pro for Medical

Important

Please read this User's Manual carefully to familiarize yourself with safe and effective usage.



No part of this manual may be reproduced, stored in a retrieval system, or transmitted, in any form or by any means, electronic, mechanical, or otherwise, without the prior written permission of EIZO Corporation. EIZO Corporation is under no obligation to hold any submitted material or information confidential unless prior arrangements are made pursuant to EIZO Corporation's receipt of said information. Although every effort has been made to ensure that this manual provides up-to-date information, please note that EIZO monitor specifications are subject to change without notice.

CONTENTS

CONTENTS	3
Chapter 1 Introduction	4
1-1. Features	4
Chapter 2 Setting Up	5
2-1. System Requirements	5
2-2. Installing the ScreenManager Pro for Medical	5
2-3. ScreenManager Pro for Medical Icon in the notification area.....	6
2-4. Uninstalling the ScreenManager Pro for Medical	6
Chapter 3 How to Start up / Exit out of the Setting Window	7
3-1. How to Start up	7
3-2. How to Exit out	7
3-3. About ScreenManager Pro for Medical	7
Chapter 4 Auto CAL Switch	8
● Assign a CAL Switch mode to an application ...	8
● Assign a CAL Switch mode to an unregistered application.....	9
Chapter 5 Screen Adjustment	10
Chapter 6 Hot Key	11
6-1. Hot Key Setting	12
● Input Signal Selection	12
● PinP Display On / Off Selection	15
Chapter 7 Manual Change of CAL Switch Mode	16
7-1. CAL Switch manual change settings	16
7-2. Disabling Manual Change of CAL Switch Mode	18
Chapter 8 Mouse Pointer Movement	19
● Warp	19
● Home position movement	20
Chapter 9 Image Rotation Plus	21
Chapter 10 Administrator settings priority	23
Chapter 11 Manual Setting	24
● Windows 8.1	24
● Windows 8.....	24
● Windows 7 / Windows Vista / Windows XP ...	25
Chapter 12 Troubleshooting	26
Appendix	27
Trademark	27

Chapter 1 Introduction

ScreenManager Pro for Medical is the software for adjusting the monitor from the computer using the mouse or keyboard through the USB interface.

1-1. Features

- **Auto CAL Switch**
By registering a CAL Switch mode to each application that has installed to the computer in advance, the monitor automatically switches its CAL Switch mode in response to starting up the application.
- **Screen Adjustment**
The ScreenManager Pro for Medical software provides the monitor's screen adjustment functions through the computer.
- **Hot Key Setting**
Monitor functions (input signal selection, PinP display on / off) can be assigned to any keys on the keyboard.
- **Manual Change of CAL Switch Mode**
The CAL Switch mode on the monitor can be switched manually.
- **Mouse Pointer Movement**
The burden of mouse operation with multi-monitor setting can be reduced.
- **Image Rotation Plus**
By detecting the monitor orientation (landscape / portrait) of the gravity sensor installed monitor, the display direction of input signal from the graphics board is switched.

Chapter 2 Setting Up

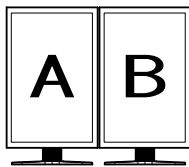
2-1. System Requirements

The ScreenManager Pro for Medical software operates under the system shown below.

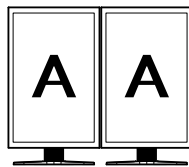
OS	Microsoft Windows 8.1 (32 bit and 64 bit) Microsoft Windows 8 (32 bit and 64 bit) Microsoft Windows 7 Service Pack 1 (32 bit and 64 bit) Microsoft Windows Vista Service Pack 1 / Service Pack 2 (32 bit and 64 bit) Microsoft Windows XP Professional x64 Edition Service Pack 2 Microsoft Windows XP Service Pack 3 (32 bit)
Computer	Built-in USB

Attention

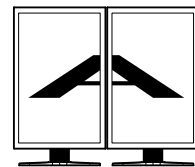
- Do not use ScreenManager Pro for Medical when multiple PCs are connected to one monitor.
- When multiple monitors are connected, each monitor should display an independent screen. Displaying the same screen on each monitor or across multiple monitors prevents adjustment using the ScreenManager Pro for Medical software (except "Mouse pointer movement"). For details of how to change the settings, see the User's Manual of the graphics board.



Independent screen on each monitor (OK)



Same screen on each monitor (NG)



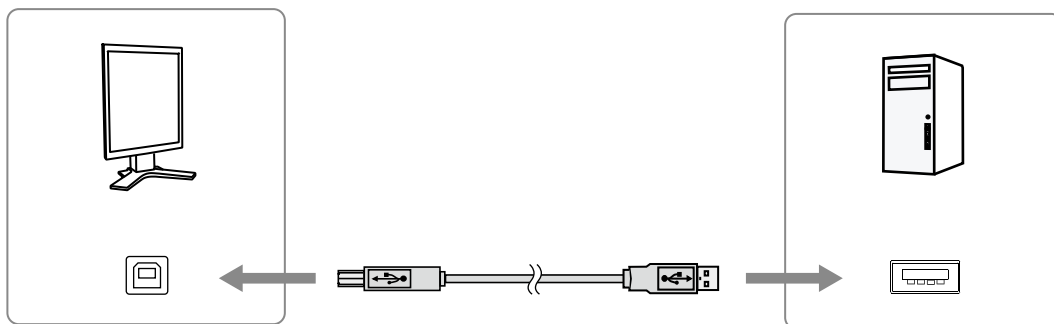
A screen over the multiple monitors (NG)

2-2. Installing the ScreenManager Pro for Medical

1. Connect the USB cable.

Connect the upstream port of the monitor to the downstream port of the USB compliant PC or another hub by using the USB cable.

[ex.:]



Note

- Refer to the User's Manual of the monitor for details on setting up USB devices.

2. Insert the “EIZO LCD Utility Disk” CD-ROM to the CD-ROM drive.

Menu opens automatically. Click “Software” tab.

Click “ScreenManager Pro for Medical” on the menu.

Note

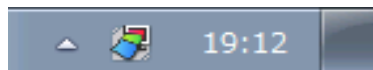
- When the menu does not appear automatically, double click “Launcher.exe”.
- When downloading and installing the software from our website, extract the downloaded file and double click “Launcher.exe”.

3. Install the software.



Click “Install” on the menu, then the ScreenManager pro for Medical installer starts up.

Follow the instruction of the menu to install the software.

After the installation is complete, the ScreenManager Pro for Medical icon appears in the notification area.



2-3. ScreenManager Pro for Medical Icon in the notification area

	ScreenManager Pro for Medical can be used.
	ScreenManager Pro for Medical cannot be used because the monitor cannot be recognized. Try the following to address the problem: <ul style="list-style-type: none">• Check if the USB cable is connected.• Turn off the power to the computer, and then turn it on again. If ScreenManager Pro for Medical does not start even after trying the above, perform the “Chapter 11 Manual Setting” (page 24) .

Note

- See [“Chapter 11 Manual Setting” \(page 24\)](#) when connecting two or more monitors with the system.
- You can select ON or OFF for the icon display. About the settings, refer to [“Chapter 10 Administrator settings priority” \(page 23\)](#).

2-4. Uninstalling the ScreenManager Pro for Medical

Windows 8.1 / Windows 8 / Windows 7 / Windows Vista

Procedure

1. Select “Control Panel” - “Programs” and click “Uninstall a Program”.
2. Select “ScreenManager Pro for Medical” from the list and click “Uninstall”.

Windows XP


Procedure

1. Select “Control Panel” - “Add / Remove Programs”.
2. Select “ScreenManager Pro for Medical” from the list and click “Remove” to remove the software.

Chapter 3 How to Start up / Exit out of the Setting Window

3-1. How to Start up

Windows 8.1

Click  on the “Start” screen, then select “ScreenManager Pro for Medical Ver x.x.x” on the “Apps” screen.

Windows 8

Click “ScreenManager Pro for Medical Ver x.x.x” on the “Start” screen.

Windows 7 / Windows Vista / Windows XP

Click “Start” - “All Programs” - “EIZO” - “G-Ignition” - “ScreenManager Pro for Medical Ver x.x.x”.

3-2. How to Exit out

Click “Close” on each adjustment menu.

3-3. About ScreenManager Pro for Medical

The software version can be checked by clicking “About” through the ScreenManager Pro for Medical icon on the far left of the title bar.

Chapter 4 Auto CAL Switch

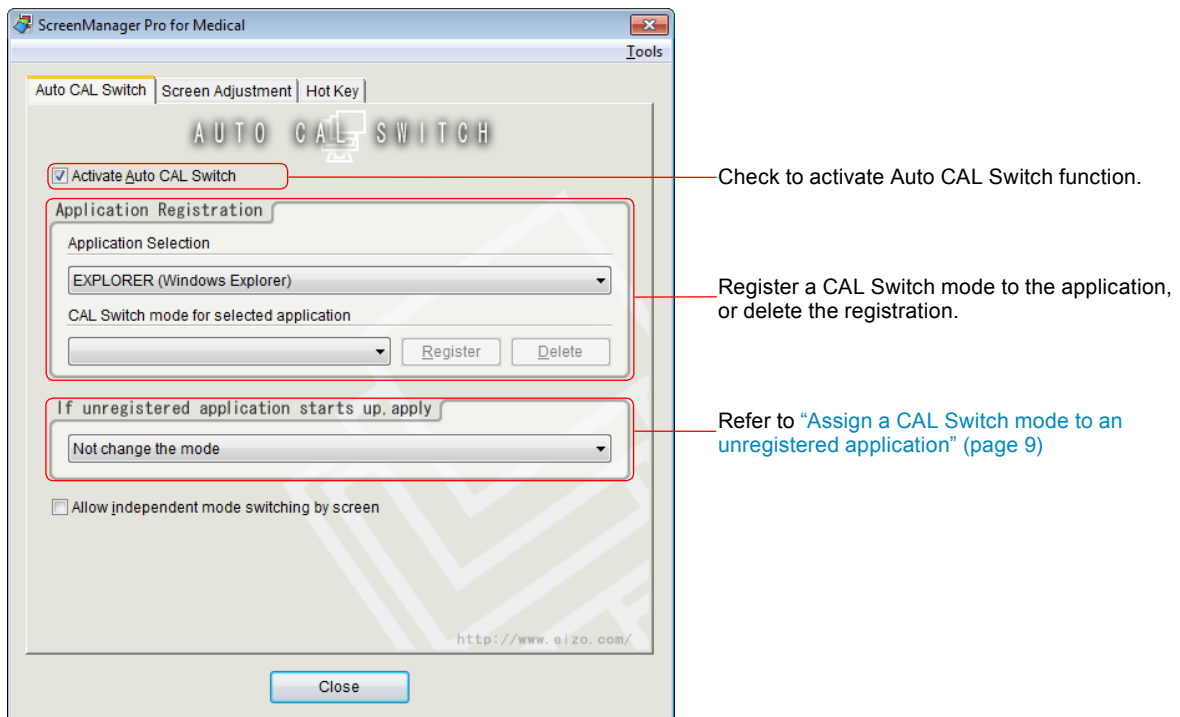
By registering a CAL Switch mode to each application that has installed to the computer in advance, the monitor automatically switches its CAL Switch mode in response to starting up the application.

Attention

- Availability of the Auto CAL Switch function depends on whether more than one mode is available for your monitor.
- The mode will not switch in the following case:
 - Calibration with RadiCS / RadiCS LE is in progress
 - The Quick Image Checker function is in use.
- Do not use the Auto CAL Switch function when using the GS521-ST monitor.

Note

- In a multi-monitor environment, you can enable Auto CAL Switch only for the monitor on which the application is running, by selecting “Allow independent mode switching by screen”. When an application is displayed across multiple monitors, the CAL Switch mode of the monitor on which the application is displayed at its largest size is switched.



● Assign a CAL Switch mode to an application

Procedure

1. Check “Activate Auto CAL Switch”.
2. Select an application from the “Application Selection” pull-down menu.

Note

- Application names that have been active and that have been already registered as CAL Switch modes are displayed in the pull-down menu.

3. Select a CAL Switch mode to assign from the “CAL Switch mode for selected application” pull-down menu.

Note

- Each CAL Switch mode availability depends on the models.
 - Refer to the User's Manual of the monitor for details about the CAL Switch modes other than those mentioned below.
-

CAL Switch Modes

Mode 1	The mode only for calibration software.
Mode 2	
Mode 3	
Mode 4	
Mode 5	

These are expedient names used on this software only for specific monitor models. The CAL Switch mode assigned to each mode depends on the monitor models. Refer to the user's manual of the monitor to confirm the CAL Switch modes of your monitor.

It is possible to change these names by RadiCS, the optional Quality Control software for medical imaging.

4. Click “Register”.
5. To continue registering other applications, repeat steps 2 to 4.

Attention

- No CAL Switch modes can be assigned for Windows desktop.
-

● Assign a CAL Switch mode to an unregistered application

Assign a CAL Switch mode to the application to which any CAL Switch modes are not registered in “Application Registration”.

Procedure

1. Select the CAL Switch mode that you want to assign from the “If unregistered application starts up, apply” pull-down menu.

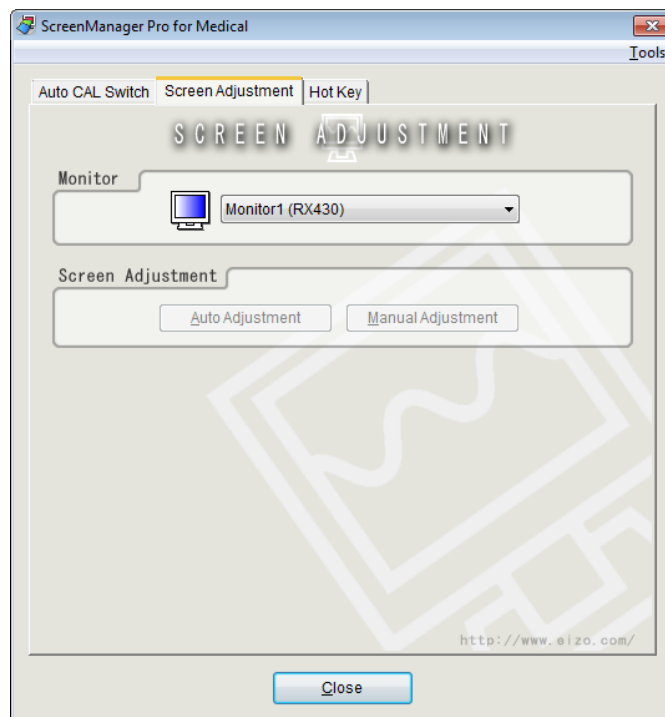
When the unregistered application became active, the monitor mode is automatically switched to the CAL Switch mode assigned to the selected application.

Chapter 5 Screen Adjustment

If connecting a computer through analog signal input, you can adjust a screen easily by mouse with displaying patterns for screen adjustment. Auto Adjustment function automatically adjusts the flicker in screen, display position, size and resolution. The gray balance will be also adjusted at the same time.

Attention

- “Resolution” is only available for the monitor incorporating the function.
- Screen Adjustment is not available for digital signal input, because the screen is displayed properly based on the setting data of this monitor.
- Screen Adjustment is not available under the following conditions.
 - When monochrome monitors are in use
 - When the PinP or PbyP display is set
 - Calibration with RadiCS / RadiCS LE is in progress
 - SelfCalibration is in progress
 - The Quick Image Checker function is in use.



Procedure

- 1. From “Monitor” pull-down menu select the monitor to adjust when two or more monitors are connected to the system.**

Attention

- If some monitors are not displayed, perform “[Chapter 11 Manual Setting](#)” (page 24).

- 2. Click “Auto Adjustment”.**

Auto adjustment function starts working.

- 3. When the screen is not displayed properly, click “Manual Adjustment”.**

Adjust manually following the instructions of the screen.

Chapter 6 Hot Key

Monitor functions (input signal selection, PinP display on / off) can be assigned to any keys on the keyboard. Pressing the key on the keyboard performs the same operation as executing a function.

Attention

- The hot key will not work in the following cases:
 - Calibration with RadiCS / RadiCS LE is in progress
 - SelfCalibration is in progress
 - The Quick Image Checker function is in use.
 - If a registered key sequence has been entered, a hot key cannot be set.
 - The set key cannot be used for other application as long as ScreenManager Pro for Medical is running.
-

Note

- When two or more monitors are connected to the monitor and the same hot key is set for each monitor, the setting starts up on each monitor simultaneously by executing the hot key.
-

6-1. Hot Key Setting

● Input Signal Selection

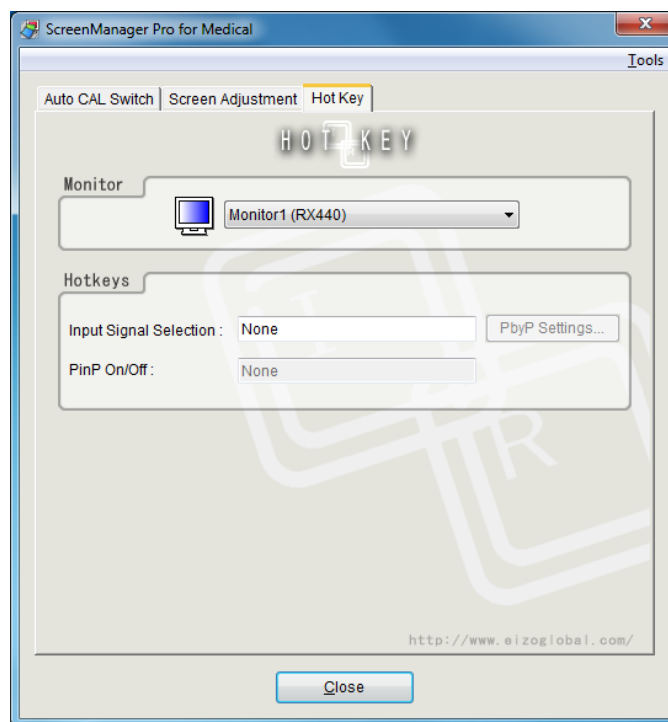
Attention

- Hot keys can be set when connecting the following monitors.*1
 - Single display mode: Monitors that allow input switching in the “Tools” adjustment menu of the monitor
 - PbyP display mode: RX440 / RX650 / RX840 / RX850
- *1 This setting is not available when the PinP display is set.

Single display mode

Procedure

1. When two or more monitors are connected to the system, select the monitor to set from “Monitor” pull-down menu.



Attention

- If some monitors are not displayed, perform “[Chapter 11 Manual Setting](#)” (page 24).
2. Set hot keys to the monitor.
Move the cursor to the “Input Signal Selection” field and press any key.
Pressing either “Delete” or “BackSpace” key displays “None” in the box, and resets the hot key.

Attention

- “PbyP Settings” can only be selected in the PbyP display mode.

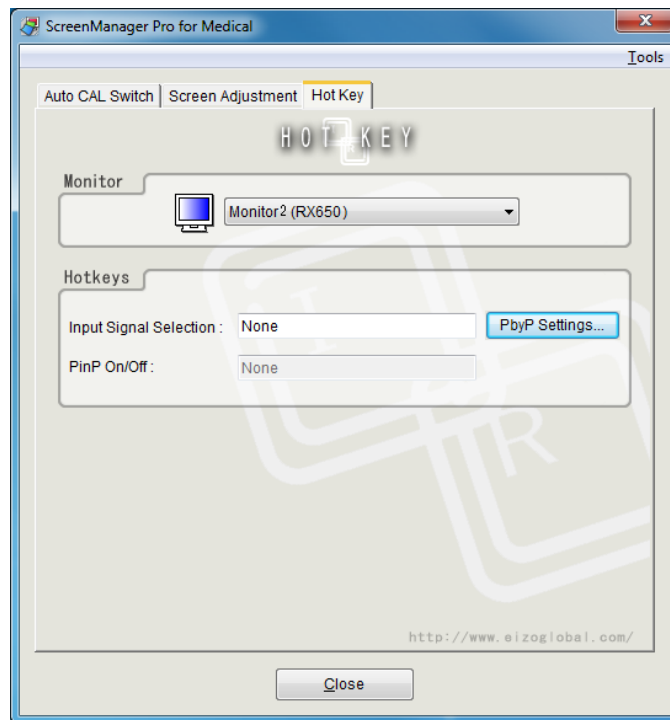
Note

- Multiple keys can be set in combination. For example, when press three keys (“Ctrl”, “Shift” and “F2”) at the same time, “Ctrl + Shift +F2” is displayed.
 - The keys assigned to Windows OS such as “Windows logo”, “Delete”, “BackSpace”, “Tab” or “Enter”, are not available for the hot keys.
 - For details of the monitor functions, refer to the user’s manual of the monitor.
3. Click “Close”.
The hot key setting is enabled.

PbyP display mode

Procedure

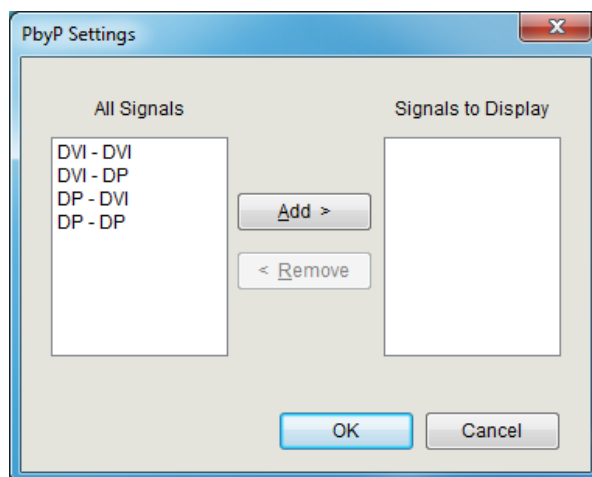
1. When two or more monitors are connected to the system, select the monitor to set from “Monitor” pull-down menu.



Attention

- If some monitors are not displayed, perform “[Chapter 11 Manual Setting](#)” (page 24).

2. Click “PbyP Settings” to select the signals to switch to.
The PbyP Settings window appears.



3. From “All Signals”, select two signal combinations you want to display, and click “Add”.

Attention

- To change the combinations of signals to display, remove the unwanted signals from the “Signals to Display” list and then add the signals to display.
- You cannot select two signal combination types at the same time from “All Signals”. Select one signal combination at a time, and then click “Add”.

4. Click “OK”.

5. Set hot keys to the monitor.

Move the cursor to the "Input Signal Selection" field and press any key.

Pressing either "Delete" or "BackSpace" key displays "None" in the box, and resets the hot key.

Note

- Multiple keys can be set in combination. For example, when press three keys ("Ctrl", "Shift" and "F2") at the same time, "Ctrl + Shift +F2" is displayed.
 - The keys assigned to Windows OS such as "Windows logo", "Delete", "BackSpace", "Tab" or "Enter", are not available for the hot keys.
 - For details of the monitor functions, refer to the user's manual of the monitor.
-

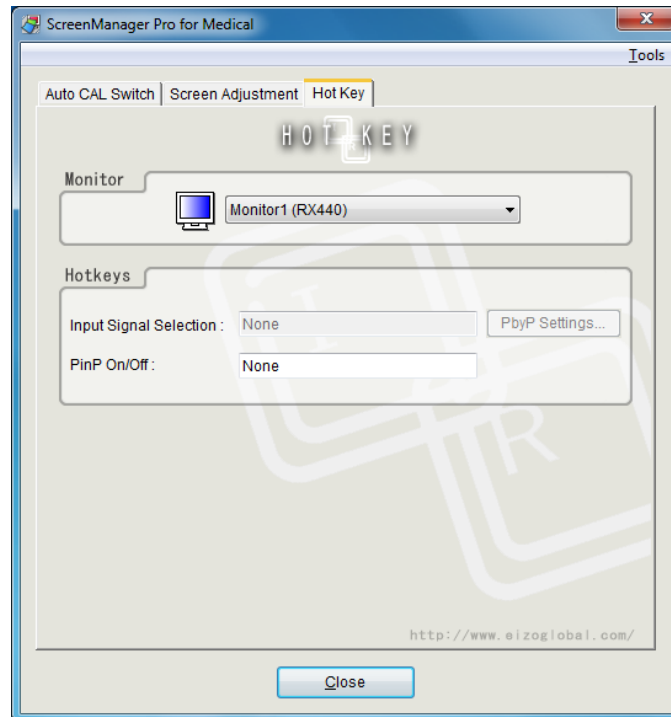
6. Click "Close".

The hot key setting is enabled.

● PinP Display On / Off Selection

Attention

- Hot keys can be set in the PinP display mode.



Procedure

1. When two or more monitors are connected to the system, select the monitor to set from “Monitor” pull-down menu.

Attention

- If some monitors are not displayed, perform [“Chapter 11 Manual Setting” \(page 24\)](#).

2. Set hot keys to the monitor.

Move the cursor to the “PinP On / Off” field and press any key.

Pressing either “Delete” or “BackSpace” key displays “None” in the box, and resets the hot key.

Note

- Multiple keys can be set in combination. For example, when press three keys (“Ctrl”, “Shift” and “F2”) at the same time, “Ctrl + Shift +F2” is displayed.
- The keys assigned to Windows OS such as “Windows logo”, “Delete”, “BackSpace”, “Tab” or “Enter”, are not available for the hot keys.
- For details of the monitor functions, refer to the user’s manual of the monitor.

3. Click “Close”.

The hot key setting is enabled.

Chapter 7 Manual Change of CAL Switch Mode

The CAL Switch mode on the monitor can be switched manually.

Attention

- If none of the connected monitors supports multiple modes, the CAL Switch dialog is not displayed.
- The setting is disabled in the following cases:
 - RadiCS / RadiCS LE is started up.
 - The Quick Image Checker function is in use.
- Do not use the CAL Switch manual change function when using the GS521-ST monitor.

Note: RX440

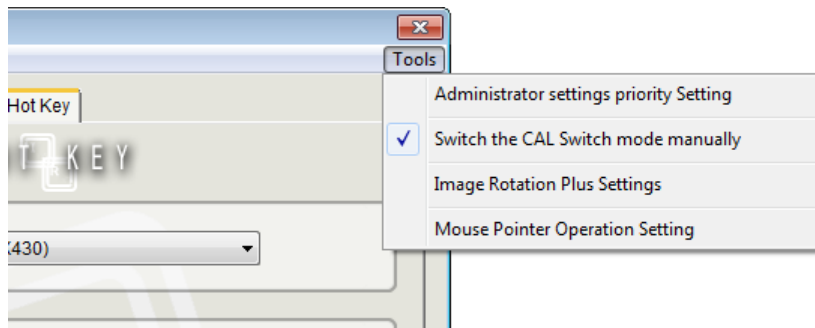
- When “PbyP” is set, the main screen and the sub screen will be changed to different CAL Switch modes respectively.
- When the Hybrid-y or ALT mode is used, it is not possible to set different CAL Switch modes to the main screen and the sub screen.
- When “PbyP” is set, the same CAL Switch mode will be set to the main screen and the sub screen if “Apply to the same models” is selected.
- When “PinP” is set, it is not possible to change the CAL Switch mode on the sub screen.

7-1. CAL Switch manual change settings

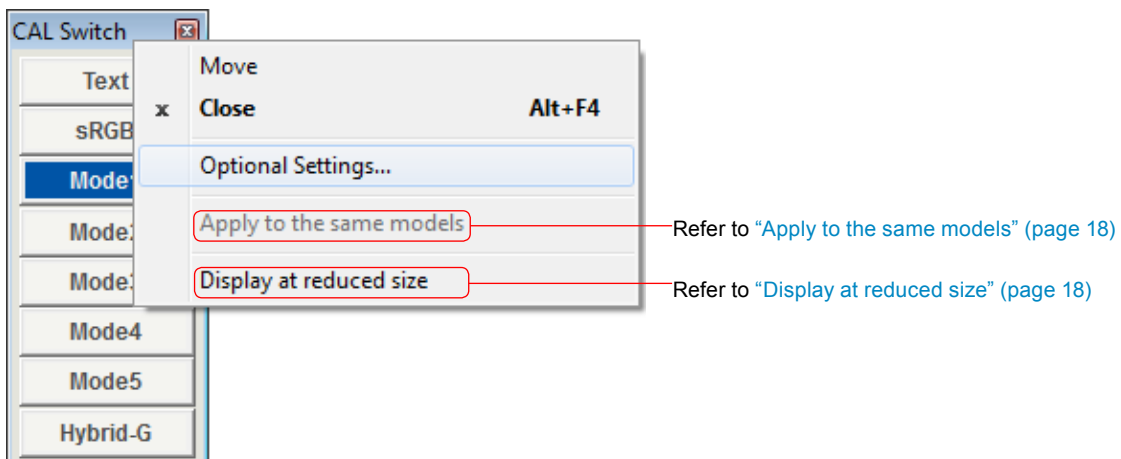
Procedure

1. Click “Tools” in the settings window and select “Switch the CAL Switch mode manually” from the list.

CAL Switch dialog appears.

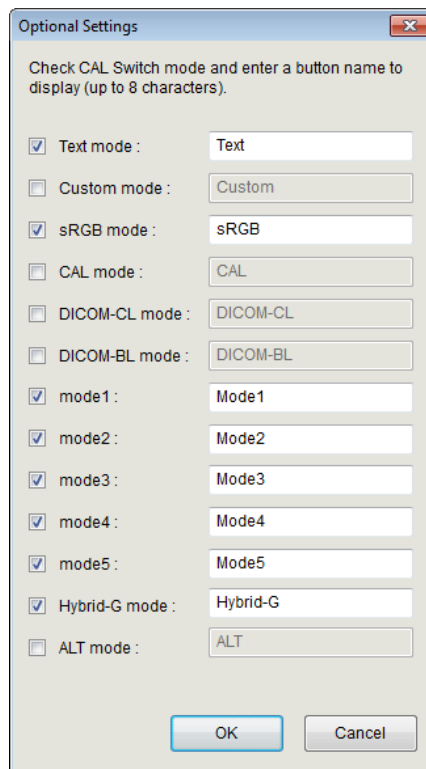


2. Right click on the title bar of the Cal Switch dialog box and select “Optional Settings” from the list.



Optional Settings screen appears.

Check the CAL Switch mode to be used. If you wish to change the button name to be displayed, enter a name of up to eight characters in the text box of the corresponding mode.



Note

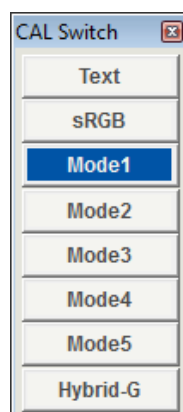
- An unsupported CAL Switch mode can only be selected, and thus the button name cannot be changed.

3. Click “OK”. The settings are applied to the CAL Switch dialog.

Clicking the button switches the CAL Switch mode.

Note

- The button of an unsupported mode cannot be selected.
- If “Apply to the same models” is disabled (default setting), display the CAL Switch dialog on the monitor for which the mode is to be switched.

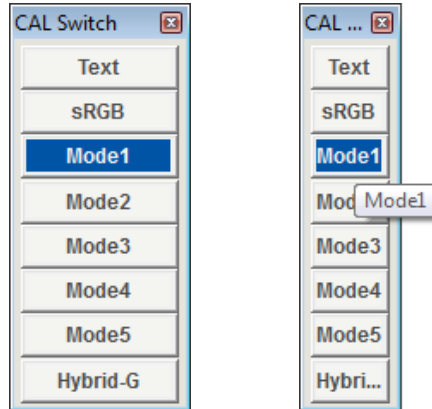


Apply to the same models

When “Apply to the same models” is selected in the multi-monitor environment, the CAL Switch mode of all monitors of the same model is switched whenever the button is pressed.

Display at reduced size

The size of the CAL Switch dialog box can be changed by selecting “Display at reduced size”. Place the mouse pointer over any button to display its button name.



7-2. Disabling Manual Change of CAL Switch Mode

Click “Tools” in the settings window and select “Switch the CAL Switch mode manually” from the list.

The CAL Switch dialog is closed and the CAL Switch manual function is disabled.

Chapter 8 Mouse Pointer Movement

The warp function that moves the mouse pointer automatically and the home position movement function that moves the mouse pointer to the set position reduces the burden of the mouse operation with multi-monitor setting.

Attention

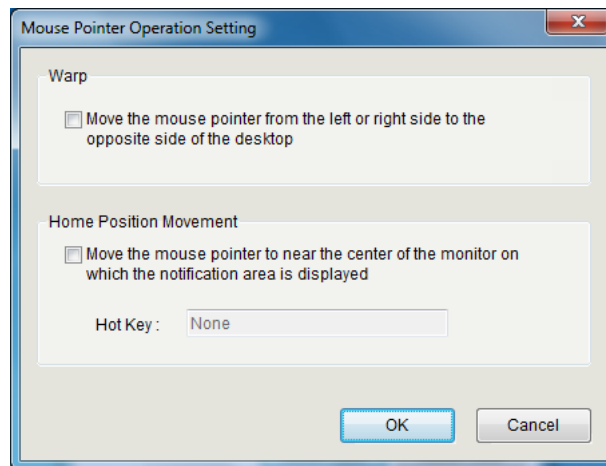
- The Mouse Pointer Movement function can only be used when multiple ScreenManager Pro for Medical-compatible monitors are connected to the computer.
- The mouse pointer movement function is set to “Disable” as the default.
- When using Windows 8.1 and multiple monitors with significantly different resolutions are connected, the mouse pointer may not move correctly. For details on how to address this problem, refer to “[Chapter 12 Troubleshooting](#)” (page 26).
- This function is not available while Mouse Pointer Operation Setting window is shown.

● Warp

When the mouse pointer arrives at the left or right edge of the desktop, it moves to the opposite edge.

Procedure

1. Click “Tools” in the settings window and select “Mouse Pointer Operation Setting” from the list.
Mouse Pointer Operation Setting window appears.



2. Select “Move the mouse pointer from the left or right side to the opposite side of the desktop”.
3. Click “Close”.
The warp function becomes enabled.

● Home position movement

When you enter the assigned hot key, the mouse pointer moves near to the center of the monitor on which the task bar is displayed.

Procedure

1. Click “Tools” in the settings window and select “Mouse Pointer Operation Setting” from the list.
Mouse Pointer Operation Setting window appears.
2. Select “Move the mouse pointer to near the center of the monitor on which the notification area is displayed”, and assign any hot key.
3. Click “Close”.
“Home position movement” becomes enabled.

Attention

- If a registered key sequence has been entered, a hot key cannot be set.

Note

- Multiple keys can be set in combination. For example, when press three keys (“Ctrl”, “Shift” and “F2”) at the same time, “Ctrl + Shift +F2” is displayed.
 - The keys assigned to Windows OS such as “Windows logo”, “Delete”, “BackSpace”, “Tab” or “Enter”, are not available for the hot keys.
 - The set keys cannot be used for other application software as long as ScreenManager Pro for Medical is running.
-

Chapter 9 Image Rotation Plus

By setting the hotkey registered on your graphics board, when the gravity sensor (image rotate function) installed monitor is connected, the display orientation change is detected and changes the display direction of the screen.

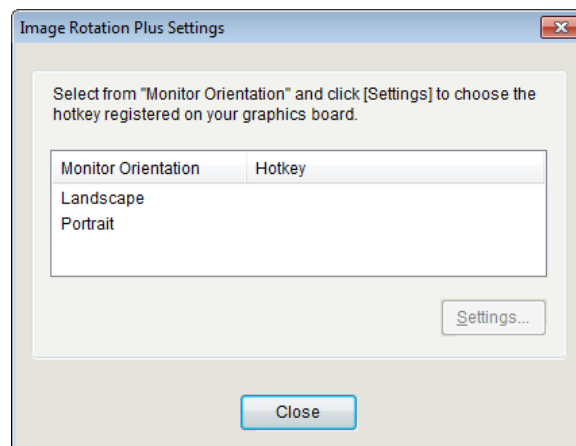
Attention

- Use graphics board that supports the Image Rotation Plus function.
- The Image Rotation Plus function can only be used with the gravity sensor (Image Rotation / Orientation) installed monitor.
- The following settings must be configured in order to use the Image Rotation Plus function.
 - "Image Rotation" : Disable
 - "Orientation" : Landscape / Portrait(SW)*1
- *1 For monitors that do not have "Portrait (SW)", select "Landscape".
- This function cannot be used when the PinP or PbyP display is set.

Procedure

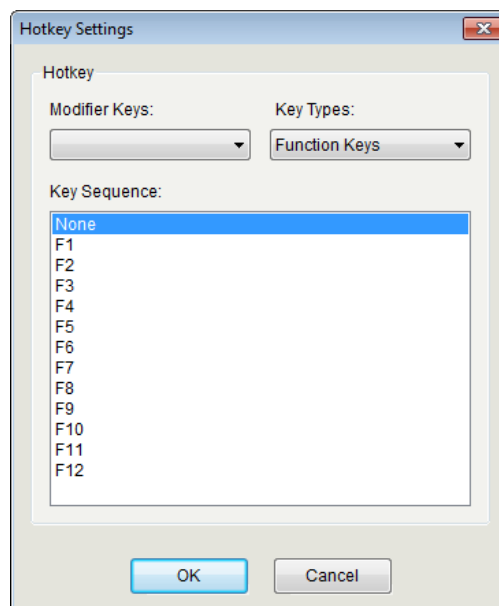
1. Click "Tools" in the settings window and select "Image Rotation Plus Settings" from the list.

Image Rotation Plus Settings window appears.



2. Select Monitor Orientation (Landscape / Portrait) and click "Settings".

Hotkey Settings window appears.



3. Setting the hotkey registered on your graphics board.

Select the modifier keys and key types to set the key sequence.

To disable the Image Rotation Plus function, select “None” from the “Key Sequence”.

Modifier Keys	Key Types	Key Sequence
Alt	Function Keys	F1 to F12
Ctrl	Alphabetic Keys	A to Z
Ctrl + Alt	Numeric Keys	0 to 9
Ctrl + Shift	Numeric Keypad	Num 0 to Num 9
Shift + Alt	Others	Page Up, Page Down, End, Home, Insert, Left, Up, Right , Down, Num Lock, Scroll Lock
Ctrl + Shift + Alt		

After the orientation of the gravity sensor installed monitor is changed, the display direction of the screen rotates.

Chapter 10 Administrator settings priority

Once you make settings in the Administrator settings priority window, the settings are used for all user accounts that share the same computer.

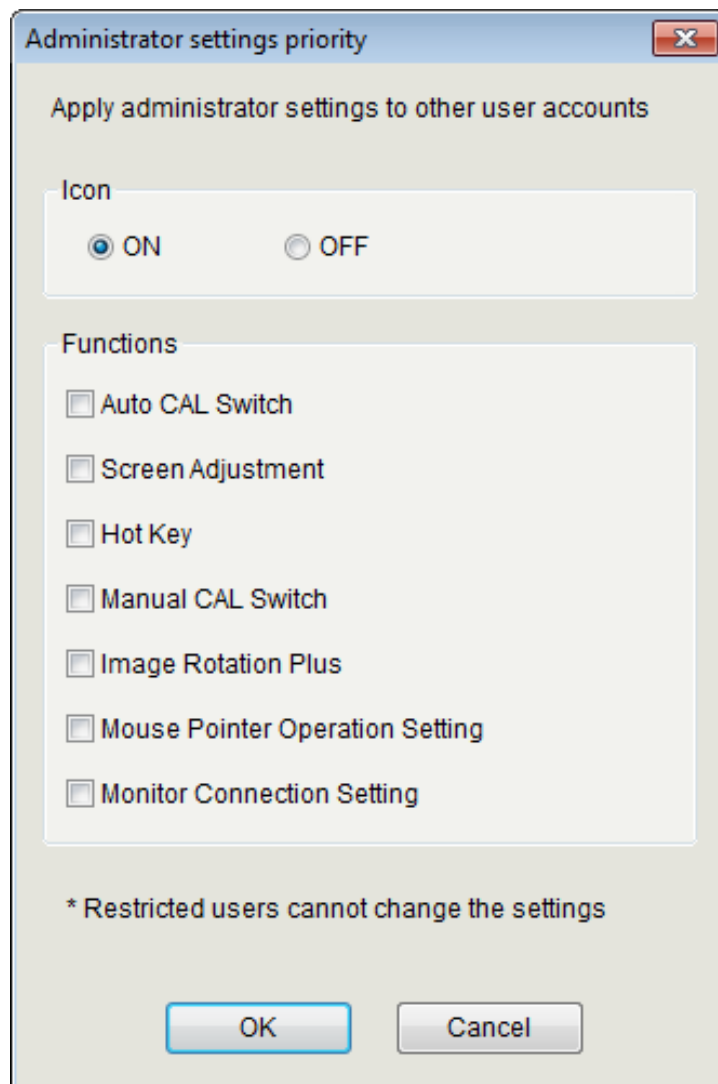
Attention

- To apply the setting to other user accounts, a user account with the administrator authority is required. About the user account setting, please contact your system administrator.
- The user who has no administrator authority can not change the settings of the items checked in “Administrator settings priority”.

Procedure

1. Click “Tools” in the settings window and select “Administrator settings priority setting” from the list.

Administrator settings priority window appears.



2. Check the checkbox to apply administrator settings.

Select ON or OFF for the icon display. (Refer to “2-3. ScreenManager Pro for Medical Icon in the notification area” (page 6).

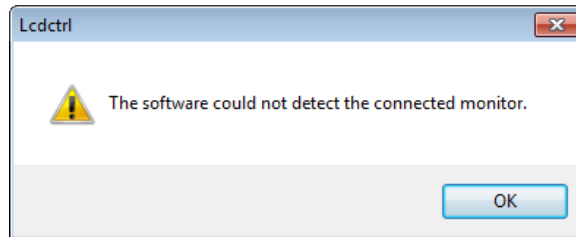
Check the checkbox to apply the function

Chapter 11 Manual Setting

ScreenManager Pro for Medical supports the multi-monitor setting and it can control two or more monitors through the software.

Before you use the software, confirm that any of the following problems does not exist. If the one of the problems remain, perform the “Manual Setting” procedure described below.

- The connected monitor is not displayed in the “Monitor” pull-down menu of Screen Adjustment tab (Refer to “Chapter 5 Screen Adjustment” (page 10)).
- The target monitor cannot be controlled, or the other monitor is controlled instead of target monitor.
- The following message appears, even when the computer was restarted with the USB cable correctly connected.



Attention

- Manual setting is not available under the following conditions.
 - Calibration with RadiCS / RadiCS LE is in progress.
 - SelfCalibration is in progress
 - The Quick Image Checker function is in use.

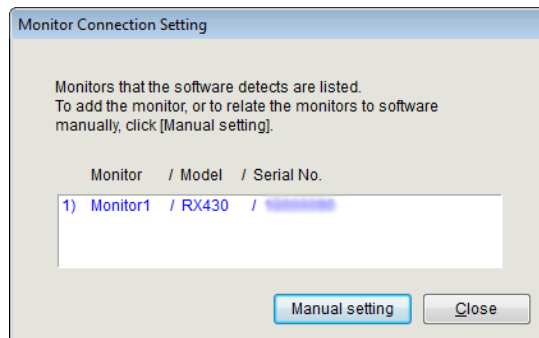
Note

- In the following cases, make settings for the main screen and for the sub screen if necessary.
 - When the “Dual Display” setting is used with the MX300W monitor
 - When the RX840 / RX650 / RX850 monitor is used
 - When the PbyP or PinP display is set

● Windows 8.1

Procedure

1. Click  on the “Start” screen and then click “Monitor Connection Setting” on the “Apps” screen.



2. Click “Manual setting”, and follow the instructions on the screen to assign the monitor.

● Windows 8

Procedure

1. Click the tile displayed as “Monitor Connection Setting” in the Start Screen.
Monitor Connection List window appears.
2. Click “Manual setting”, and follow the instructions on the screen to assign the monitor.

● Windows 7 / Windows Vista / Windows XP


Procedure

1. Click “Start” - “(All) Programs” - “EIZO” - “ScreenManager Pro for Medical” - “Monitor Connection Setting”.
2. Click “Manual setting”, and follow the instructions on the screen to assign the monitor.

Chapter 12 Troubleshooting

Problems	Possible cause and remedy
1. The settings menu of ScreenManager Pro for Medical won't be run.	<ul style="list-style-type: none"> • Confirm the USB cable is correctly connected. • Turn off the PC power, then turn it back on. • If the settings menu won't be run, follow the procedure described in "Chapter 11 Manual Setting" (page 24).
2. Auto CAL Switch is disabled.	<ul style="list-style-type: none"> • Confirm "Activate Auto CAL Switch" option in the "Auto CAL Switch" tab is checked. • Close the setting window. (Closing the setting window enables the function.)
3. Hot key is disabled.	<ul style="list-style-type: none"> • Close the setting window. (Closing the setting window enables the function.)
4. The signal from the graphics board does not rotate or the image rotates in the wrong direction.	<ul style="list-style-type: none"> • Confirm that the rotating direction registered on your graphics board is correct. • Check the monitor settings. • Set the registered information of your graphics board and the Image Rotation Plus function setting to be identical.

For Multi-monitor Setting only

5. The target monitor cannot be controlled, or the other monitor is controlled instead of target monitor.	<ul style="list-style-type: none"> • USB connected monitor might not related correctly to the software. Follow the procedure described in "Chapter 11 Manual Setting" (page 24).
6. Warp movement or movement to the home position does not work correctly (Windows 8.1)	<ul style="list-style-type: none"> • When using Windows 8.1 and multiple monitors with significantly different resolutions are connected, the mouse pointer may not move correctly because the scaling level of the screen on each monitor is different. Follow the procedure described below to change the settings so that the same scaling level is used for all connected monitors. <p>Procedure</p> <ol style="list-style-type: none"> 1. Click  on the "Start" screen. The "Apps" screen appears. 2. Select "System Tools" - "Control Panel" - "Appearance and Personalization" - "Display", and check the "Let me choose one scaling level for all my displays" checkbox. 3. Click "Apply". The following message appears: "You must sign out of your computer to apply these changes." 4. Click "Sign out now". The same scaling level is applied to all of the monitors.

Appendix

Trademark

The terms HDMI and HDMI High-Definition Multimedia Interface, and the HDMI Logo are trademarks or registered trademarks of HDMI Licensing, LLC in the United States and other countries.

VESA is a registered trademark of Video Electronics Standards Association.

Acrobat, Adobe, Adobe AIR, and Photoshop are registered trademarks of Adobe Systems Incorporated in the United States and other countries.

AMD Athlon and AMD Opteron are trademarks of Advanced Micro Devices, Inc.

Apple, ColorSync, eMac, iBook, iMac, iPad, Mac, MacBook, Macintosh, Mac OS, PowerBook, and QuickTime are registered trademarks of Apple Inc.

ColorMunki, Eye-One, and X-Rite are registered trademarks or trademarks of X-Rite Incorporated in the United States and/or other countries.

ColorVision and ColorVision Spyder2 are registered trademarks of DataColor Holding AG in the United States.

Spyder3 and Spyder4 are trademarks of DataColor Holding AG.

ENERGY STAR is a registered trademark of the United States Environmental Protection Agency in the United States and other countries.

GRACoL and IDEAlliance are registered trademarks of International Digital Enterprise Alliance.

Linux is a registered trademark of Linus Torvalds.

NEC is a registered trademark of NEC Corporation.

PC-9801 and PC-9821 are trademarks of NEC Corporation.

NextWindow is a trademark of NextWindow Ltd.

Intel, Intel Core, Pentium, and Thunderbolt are trademarks of Intel Corporation in the U.S. and/or other countries.

PowerPC is a registered trademark of International Business Machines Corporation.

PlayStation is a registered trademark of Sony Computer Entertainment Inc.

PSP and PS3 are trademarks of Sony Computer Entertainment Inc.

RealPlayer is a registered trademark of RealNetworks, Inc.

Red Hat is a registered trademark of Red Hat, Inc.

TouchWare is a trademark of 3M Touch Systems, Inc.

Windows, Windows Media, Windows Vista, SQL Server, Xbox 360, and Internet Explorer are registered trademarks of Microsoft Corporation in the United States and other countries.

YouTube is a registered trademark of Google Inc.

Firefox is a registered trademark of the Mozilla Foundation.

Kensington and MicroSaver are registered trademarks of ACCO Brands Corporation.

EIZO, the EIZO Logo, ColorEdge, DuraVision, FlexScan, FORIS, RadiCS, RadiForce, RadiNET, Raptor, and ScreenManager are registered trademarks of EIZO Corporation in Japan and other countries.

ColorNavigator, EcoView NET, EIZO EasyPIX, EIZO ScreenSlicer, i•Sound, Screen Administrator, UniColor, and Re/Vue are trademarks of EIZO Corporation.

All other company and product names are trademarks or registered trademarks of their respective owners.



EIZO Corporation

<http://www.eizoglobal.com>

Copyright © 2005-2015 EIZO Corporation All rights reserved.

22th Edition-September, 2015

03V22242X1
(U.M-SMPROMED)