



ColorNavigator™

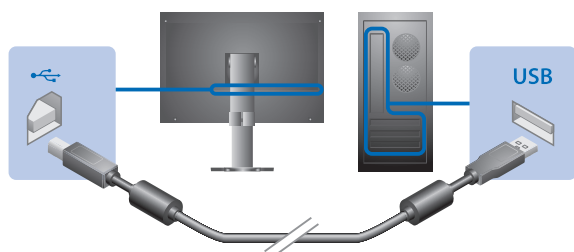
Quick Reference

Procedure from Monitor and Measurement Device Connection to ColorNavigator Startup

Connecting Monitor and Measurement Device

1 Connect the USB upstream port of monitor and the USB downstream port of computer with the EIZO USB Cable (MD-C93 or UU200SS)

2 Connect the measurement device to the USB downstream port of the computer or the monitor



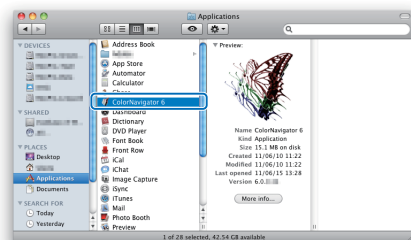
* Some measurement devices may have restrictions on the USB port to connect. For details, see the user's manual of the measurement device.

Preparing

- Before performing monitor adjustment, turn on both the monitor and the computer (warming up).
 - * For details on the warming-up time, see the User's Manual of the monitor.
- Disable the power management function of the computer so it does not enter power saving mode.
- Set the display resolution and colors.
 - We suggest using the monitor with the recommended resolution.
 - Set the monitor color at 16.7 million (24 bit) or more.
 - * About the recommended resolution of the monitor, see the user's manual of the monitor.

Starting Up on Macintosh

Double-click the "ColorNavigator 6" icon in the "Applications" folder.



Starting Up on Windows

Double-click the "ColorNavigator 6" shortcut icon on the desktop.



- Regarding installing ColorNavigator, refer to the ColorNavigator User's Manual (CD-ROM).
- This Quick Reference describes the basic monitor adjustment. For advanced settings and adjustments, refer to the ColorNavigator User's Manual (CD-ROM).
- The available functions and displayed windows depend on the type of measurement device or monitor.

Operation on Main Window

About Buttons

The below window appears after starting up ColorNavigator.

Select another monitor
Select a monitor (when used in a multiple monitor environment).

Adjust...
Adjust the monitor based on the adjustment target that is selected from the target list.

Validate...
Validate the monitor adjustment status with respect to the adjustment target of the monitor.

Advanced ▾
Provide functions, such as manual adjustment and profile emulation.

Help ▾
Open the user's manual of the monitor as well as display the monitor and version information.

Detail...
Display the details of the adjustment target selected from the target list.

Preferences...
Make the ColorNavigator operation settings.

Create a new target...
Specify the target and set a new adjustment target.

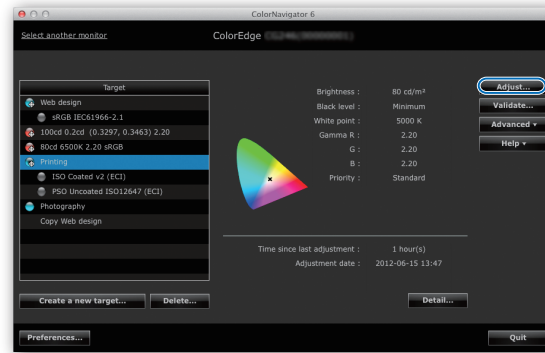
Detail...
Display the details of the adjustment target selected from the target list.

Adjustment Procedure

1. Selecting Targets

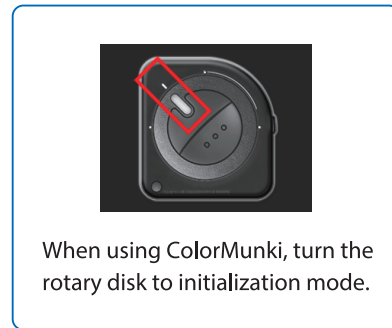
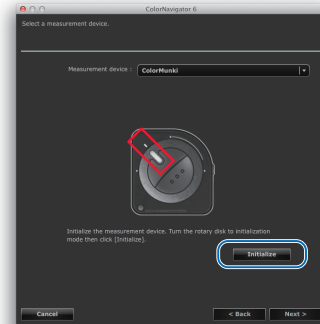
Select an adjustment target from the target list in the main window and click "Adjust".

- **Printing**
Standard setting for printing
- **Photography**
Standard setting for viewing photographs
- **Web design**
Standard setting for creating Web contents



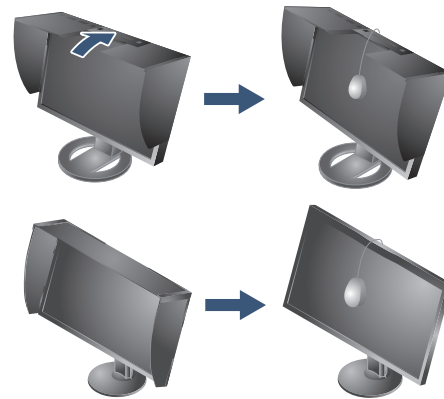
2. Selecting a Measurement Device

Follow the software instructions and select a measurement device. Initialize the measurement device if necessary.



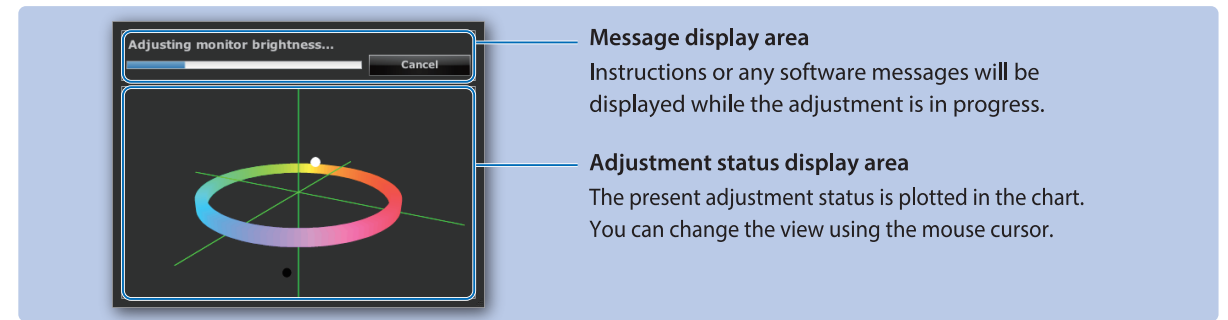
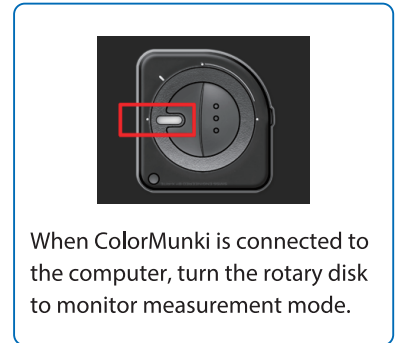
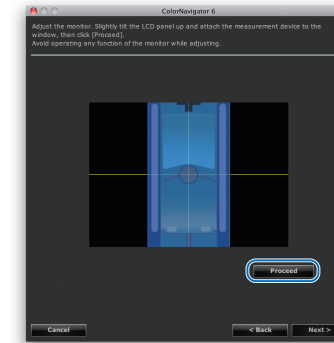
3. Attaching Measurement Device

Tilt the LCD panel up slightly and attach the measurement device to the measurement window. (Refer to the user's manual of the measurement device.)



4. Starting the Monitor Adjustment

Click "Proceed" to adjust the monitor. ColorNavigator sequentially shows some patterns for adjusting the monitor. Progress bars are displayed on the right-bottom corner while adjustment is in progress.



5. Confirming the Adjustment Result

After completing the monitor adjustment, confirm the adjustment result displayed.

Save the adjustment result and generate a monitor profile.

The monitor adjustment is completed.

